

Охлаждаемые витрины, встраиваемые витрины, витрины с прилавком, подогреваемые витрины, открытые витрины

Технические характеристики

По вопросам продаж и поддержки обращайтесь:

Алматы (727)345-47-04
Ангарск (3955)60-70-56
Архангельск (8182)63-90-72
Астрахань (8512)99-46-04
Барнаул (3852)73-04-60
Белгород (4722)40-23-64
Благовещенск (4162)22-76-07
Брянск (4832)59-03-52
Владивосток (423)249-28-31
Владикавказ (8672)28-90-48
Владимир (4922)49-43-18
Волгоград (844)278-03-48
Вологда (8172)26-41-59
Воронеж (473)204-51-73
Екатеринбург (343)384-55-89

Иваново (4932)77-34-06
Ижевск (3412)26-03-58
Иркутск (395)279-98-46
Казань (843)206-01-48
Калининград (4012)72-03-81
Калуга (4842)92-23-67
Кемерово (3842)65-04-62
Киров (8332)68-02-04
Коломна (4966)23-41-49
Кострома (4942)77-07-48
Краснодар (861)203-40-90
Красноярск (391)204-63-61
Курск (4712)77-13-04
Курган (3522)50-90-47
Липецк (4742)52-20-81

Магнитогорск (3519)55-03-13
Москва (495)268-04-70
Мурманск (8152)59-64-93
Набережные Челны (8552)20-53-41
Нижний Новгород (831)429-08-12
Новокузнецк (3843)20-46-81
Ноябрьск (3496)41-32-12
Новосибирск (383)227-86-73
Омск (3812)21-46-40
Орел (4862)44-53-42
Оренбург (3532)37-68-04
Пенза (8412)22-31-16
Петрозаводск (8142)55-98-37
Псков (8112)59-10-37
Пермь (342)205-81-47

Ростов-на-Дону (863)308-18-15
Рязань (4912)46-61-64
Самара (846)206-03-16
Санкт-Петербург (812)309-46-40
Саратов (845)249-38-78
Севастополь (8692)22-31-93
Саранск (8342)22-96-24
Симферополь (3652)67-13-56
Смоленск (4812)29-41-54
Сочи (862)225-72-31
Ставрополь (8652)20-65-13
Сургут (3462)77-98-35
Сыктывкар (8212)25-95-17
Тамбов (4752)50-40-97
Тверь (4822)63-31-35

Тольятти (8482)63-91-07
Томск (3822)98-41-53
Тула (4872)33-79-87
Тюмень (3452)66-21-18
Ульяновск (8422)24-23-59
Улан-Удэ (3012)59-97-51
Уфа (347)229-48-12
Хабаровск (4212)92-98-04
Чебоксары (8352)28-53-07
Челябинск (351)202-03-61
Череповец (8202)49-02-64
Чита (3022)38-34-83
Якутск (4112)23-90-97
Ярославль (4852)69-52-93

Россия +7(495)268-04-70

Казахстан +7(727)345-47-04

Беларусь +(375)257-127-884

Узбекистан +998(71)205-18-59

Киргизия +996(312)96-26-47

эл.почта: mhi@nt-rt.ru || сайт: <http://metos.nt-rt.ru/>

Chilled display Metos Green OE-145-72-E-R290

Metos Green OE-145-72-E is a recessed, self-serve chilled display designed for use under demanding conditions, with a width of 1450 mm and height of 720 mm. The simple squared shape of the chilled display highlights the products being sold.

The display's tempered glass side panels, the glass shelf and the bright LED lighting for shelves and the cold tub make products being sold highly visible. The self-service display is open on the customer side, with hinged glass doors on the seller's side. A 215 mm high cooled tub with Gastronorm dimensioning.

In addition, the display is equipped with an auto-defrost function, the melting water from which is directed to the grey water system. For those installation locations where it is not possible to connect the display to the grey water system, an condensate evaporation tank is included as an accessory.

The display is equipped with air cooled chilling, digital temperature control and a fan speed regulator. Air temperature range is +2...+4 °C. The glass side panels and glass shelf is made from tempered glass. The substructure is made from stainless steel and insulation is polyurethane.

- recessable into furniture (cut out size 1390 x 670 m)
- shelf and tub lighting
- tempered glass side panels and shelf
- sales space 0.99 m²
- temperature area +2...+4°C
- digital temperature regulation
- ventilator speed regulator
- easy to clean

EXTRA ACCESSORIES (can be ordered separately):

- sneeze guard for shelf
- price tag frame;
- evaporation



Chilled display Metos Green OE-145-72-E-R290

| | |
|----------------------------|----------------|
| Product capacity | 4x GN1/1 |
| Item width mm | 1450 |
| Item depth mm | 695 |
| Item height mm | 720/1395 |
| Package volume | 2.528 |
| Unit of volume | m3 |
| Package volume | 2.528 m3 |
| Package length | 160 |
| Package width | 100 |
| Package height | 158 |
| Package unit of dimension | cm |
| Package dimensions (LxWxH) | 160x100x158 cm |
| Net weight | 220 |
| Net weight | 220 kg |
| Gross weight | 250 |
| Package weight | 250 kg |
| Unit of weight | kg |
| Connection power kW | 0.889 |
| Fuse Size A | 10 |
| Connection voltage V | 230 |
| Number of phases | 1NPE |
| Frequency Hz | 50 |
| Drain diameter | 30 |
| Cooling capacity W | 1570 |
| Type of the refrigerant | R290 |
| Sound level dB | 70 |
| Energy class rating | G |

Chilled display Metos Green OE-145-55-E-R290

Metos Green OE-145-55-E is a recessed, self-serve chilled display designed for use under demanding conditions, with a width of 1450 mm and height of 545 mm. The simple squared shape of the chilled display highlights the products being sold.

The display's tempered glass side panels, the glass shelf and the bright LED lighting for shelves and the cold tub make products being sold highly visible. The self-service display is open on the customer side, with hinged glass doors on the seller's side. A 215 mm high cooled tub with Gastronorm dimensioning.

In addition, the display is equipped with an auto-defrost function, the melting water from which is directed to the grey water system. For those installation locations where it is not possible to connect the display to the grey water system, an condensate evaporation tank is included as an accessory.

The display is equipped with air cooled chilling, digital temperature control and a fan speed regulator. Air temperature range is +2...+4 °C. The glass side panels and glass shelf is made from tempered glass. The substructure is made from stainless steel and insulation is polyurethane.

- recessable into furniture (cut out size 1390 x 670 mm)
- shelf and tub lighting
- tempered glass side panels and shelf
- sales space 0.69 m²
- temperature area +2...+4 °C
- digital temperature regulation
- ventilator speed regulator
- easy to clean

EXTRA ACCESSORIES (can be ordered separately):

- sneeze guard for shelf
- price tag frame;
-



Chilled display Metos Green OE-145-55-E-R290

| | |
|----------------------------|----------------|
| Product capacity | 4x GN1/1 |
| Item width mm | 1450 |
| Item depth mm | 695 |
| Item height mm | 545/1225 |
| Package volume | 2.32 |
| Unit of volume | m3 |
| Package volume | 2.32 m3 |
| Package length | 160 |
| Package width | 100 |
| Package height | 145 |
| Package unit of dimension | cm |
| Package dimensions (LxWxH) | 160x100x145 cm |
| Net weight | 200 |
| Net weight | 200 kg |
| Gross weight | 230 |
| Package weight | 230 kg |
| Unit of weight | kg |
| Connection power kW | 0.779 |
| Fuse Size A | 10 |
| Connection voltage V | 230 |
| Number of phases | 1NPE |
| Frequency Hz | 50 |
| Drain diameter | 30 |
| Cooling capacity W | 1320 |
| Type of the refrigerant | R290 |
| Sound level dB | 70 |
| Energy class rating | G |

Chilled display Metos Green OE-80-55-E-R290

Metos Green OE-80-55-E is a recessed, self-serve chilled display designed for use under demanding conditions, with a width of 800 mm and height of 545 mm. The simple squared shape of the chilled display highlights the products being sold.

The display's tempered glass side panels, the glass shelf and the bright LED lighting for shelves and the cold tub make products being sold highly visible. The self-service display is open on the customer side, with hinged glass doors on the seller's side. A 215 mm high cooled tub with Gastronorm dimensioning.

In addition, the display is equipped with an auto-defrost function, the melting water from which is directed to the grey water system. For those installation locations where it is not possible to connect the display to the grey water system, an condensate evaporation tank is included as an accessory.

The display is equipped with air cooled chilling, digital temperature control and a fan speed regulator. Air temperature range is +2...+4 °C. The glass side panels and glass shelf is made from tempered glass. The substructure is made from stainless steel and insulation is polyurethane.

- recessable into furniture (cut out size 740 x 670 m)
- shelf and tub lighting
- tempered glass side panels and shelf
- sales space 0.55 m²
- temperature area +2...+4 °C
- digital temperature regulation
- ventilator speed regulator
- interior LED-lighting
- easy to clean

EXTRA ACCESSORIES (can be ordered separately):

- sneeze guard for shelf
- price

tag frame;

- evaporation tank; Manual or Electrical 1000W tag frame;
- evaporation tank; Manual or Electrical 1000W



Chilled display Metos Green OE-80-55-E-R290

| | |
|----------------------------|----------------|
| Product capacity | 2x GN1/1 |
| Item width mm | 800 |
| Item depth mm | 695 |
| Item height mm | 545/1225 |
| Package volume | 1.738 |
| Unit of volume | m3 |
| Package volume | 1.738 m3 |
| Package length | 110 |
| Package width | 100 |
| Package height | 158 |
| Package unit of dimension | cm |
| Package dimensions (LxWxH) | 110x100x158 cm |
| Net weight | 142 |
| Net weight | 142 kg |
| Gross weight | 162 |
| Package weight | 162 kg |
| Unit of weight | kg |
| Connection power kW | 0.661 |
| Fuse Size A | 10 |
| Connection voltage V | 230 |
| Number of phases | 1NPE |
| Frequency Hz | 50 |
| Drain diameter | 30 |
| Type of the refrigerant | R290 |
| Sound level dB | 70 |
| Daily power cons. kWh | 12.7 |

Chilled display Metos Green OE-112-72-E-R290

Metos Green OE-112-72-E is a recessed, self-serve chilled display designed for use under demanding conditions, with a width of 1125 mm and height of 720 mm. The simple squared shape of the chilled display highlights the products being sold.

The display's tempered glass side panels, the glass shelf and the bright LED lighting for shelves and the cold tub make products being sold highly visible. The self-service display is open on the customer side, with hinged glass doors on the seller's side. A 215 mm high cooled tub with Gastronorm dimensioning.

In addition, the display is equipped with an auto-defrost function, the melting water from which is directed to the grey water system. For those installation locations where it is not possible to connect the display to the grey water system, an condensate evaporation tank is included as an accessory.

The display is equipped with air cooled chilling, digital temperature control and a fan speed regulator. Air temperature range is +2...+4 °C. The glass side panels and glass shelf is made from tempered glass. The substructure is made from stainless steel and insulation is polyurethane.

- recessable into furniture (cut out size 1065 x 670 mm)
- shelf and tub lighting
- tempered glass side panels and shelf
- sales space 0.8 m²
- temperature area +2...+4 °C
- digital temperature regulation
- ventilator speed regulator
- easy to clean

EXTRA ACCESSORIES (can be ordered separately):

- sneeze guard for shelf
- price tag frame;
- evaporation



Chilled display Metos Green OE-112-72-E-R290

| | |
|----------------------------|----------------|
| Product capacity | 3x GN1/1 |
| Item width mm | 1125 |
| Item depth mm | 695 |
| Item height mm | 720/1395 |
| Package volume | 1.975 |
| Unit of volume | m3 |
| Package volume | 1.975 m3 |
| Package length | 125 |
| Package width | 100 |
| Package height | 158 |
| Package unit of dimension | cm |
| Package dimensions (LxWxH) | 125x100x158 cm |
| Net weight | 180 |
| Net weight | 180 kg |
| Gross weight | 210 |
| Package weight | 210 kg |
| Unit of weight | kg |
| Connection power kW | 0.724 |
| Fuse Size A | 10 |
| Connection voltage V | 230 |
| Number of phases | 1NPE |
| Frequency Hz | 50 |
| Drain diameter | 30 |
| Cooling capacity W | 1020 |
| Type of the refrigerant | R290 |
| Sound level dB | 70 |
| Energy class rating | G |

Chilled display Metos Green OE-112-89-E-R290

Metos Green OE-112-89-E is a recessed, self-serve chilled display designed for use under demanding conditions, with a width of 1125 mm and height of 890 mm. The simple squared shape of the chilled display highlights the products being sold.

The display's tempered glass side panels, the glass shelf and the bright LED lighting for shelves and the cold tub make products being sold highly visible. The self-service display is open on the customer side, with hinged glass doors on the seller's side. A 215 mm high cooled tub with Gastronorm dimensioning.

In addition, the display is equipped with an auto-defrost function, the melting water from which is directed to the grey water system. For those installation locations where it is not possible to connect the display to the grey water system, an condensate evaporation tank is included as an accessory.

The display is equipped with air cooled chilling, digital temperature control and a fan speed regulator. Air temperature range is +2...+4 °C. The glass side panels and glass shelf is made from tempered glass. The substructure is made from stainless steel and insulation is polyurethane.

- recessable into furniture (cut out size 1065 x 670 m)
- shelf and tub lighting
- tempered glass side panels and shelf
- sales space 0.96 m²
- temperature area +2...+4 °C
- digital temperature regulation
- ventilator speed regulator
- easy to clean

EXTRA ACCESSORIES (can be ordered separately):

- sneeze guard for shelf
- price tag frame;
-



Chilled display Metos Green OE-112-89-E-R290

| | |
|----------------------------|--------------------|
| Product capacity | 3x GN1/1+3 shelves |
| Item width mm | 1125 |
| Item depth mm | 695 |
| Item height mm | 890/1565 |
| Package volume | 2.275 |
| Unit of volume | m3 |
| Package volume | 2.275 m3 |
| Package length | 130 |
| Package width | 100 |
| Package height | 175 |
| Package unit of dimension | cm |
| Package dimensions (LxWxH) | 130x100x175 cm |
| Net weight | 200 |
| Net weight | 200 kg |
| Gross weight | 230 |
| Package weight | 230 kg |
| Unit of weight | kg |
| Connection power kW | 0.871 |
| Fuse Size A | 10 |
| Connection voltage V | 230 |
| Number of phases | 1NPE |
| Frequency Hz | 50 |
| Drain diameter | 30 |
| Cooling capacity W | 1570 |
| Type of the refrigerant | R290 |
| Sound level dB | 70 |
| Energy class rating | G |

Chilled display Metos Green OE-112-55-E-R290

Metos Green OE-112-55-E is a recessed, self-serve chilled display designed for use under demanding conditions, with a width of 1125 mm and height of 545 mm. The simple squared shape of the chilled display highlights the products being sold.

The display's tempered glass side panels, the glass shelf and the bright LED lighting for shelves and the cold tub make products being sold highly visible. The self-service display is open on the customer side, with hinged glass doors on the seller's side. A 215 mm high cooled tub with Gastronorm dimensioning.

In addition, the display is equipped with an auto-defrost function, the melting water from which is directed to the grey water system. For those installation locations where it is not possible to connect the display to the grey water system, an condensate evaporation tank is included as an accessory.

The display is equipped with air cooled chilling, digital temperature control and a fan speed regulator. Air temperature range is +2...+4 °C. The glass side panels and glass shelf is made from tempered glass. The substructure is made from stainless steel and insulation is polyurethane.

- recessable into furniture (cut out size 1065 x 670 mm)
- shelf and tub lighting
- tempered glass side panels and shelf
- sales space 0.54 m²
- temperature area +2...+4 °C
- digital temperature regulation
- ventilator speed regulator
- easy to clean

EXTRA ACCESSORIES (can be ordered separately):

- sneeze guard for shelf
- price tag frame;
-



Chilled display Metos Green OE-112-55-E-R290

| | |
|----------------------------|----------------|
| Product capacity | 3x GN1/1 |
| Item width mm | 1125 |
| Item depth mm | 695 |
| Item height mm | 545/1225 |
| Package volume | 2.291 |
| Unit of volume | m3 |
| Package volume | 2.291 m3 |
| Package length | 145 |
| Package width | 100 |
| Package height | 158 |
| Package unit of dimension | cm |
| Package dimensions (LxWxH) | 145x100x158 cm |
| Net weight | 170 |
| Net weight | 170 kg |
| Gross weight | 200 |
| Package weight | 200 kg |
| Unit of weight | kg |
| Connection power kW | 0.598 |
| Fuse Size A | 10 |
| Connection voltage V | 230 |
| Number of phases | 1NPE |
| Frequency Hz | 50 |
| Drain diameter | 30 |
| Cooling capacity W | 920 |
| Type of the refrigerant | R290 |
| Sound level dB | 70 |
| Energy class rating | G |

Chilled display Metos Green OE-80-72-E-R290

Metos Green OE-80-72-E is a recessed, self-serve chilled display designed for use under demanding conditions, with a width of 800 mm and height of 720 mm. The simple squared shape of the chilled display highlights the products being sold.

The display's tempered glass side panels, the glass shelf and the bright LED lighting for shelves and the cold tub make products being sold highly visible. The self-service display is open on the customer side, with hinged glass doors on the seller's side. A 215 mm high cooled tub with Gastronorm dimensioning.

In addition, the display is equipped with an auto-defrost function, the melting water from which is directed to the grey water system. For those installation locations where it is not possible to connect the display to the grey water system, an condensate evaporation tank is included as an accessory.

The display is equipped with air cooled chilling, digital temperature control and a fan speed regulator. Air temperature range is +2...+4 °C. The glass side panels and glass shelf is made from tempered glass. The substructure is made from stainless steel and insulation is polyurethane.

- recessable into furniture (cut out size 740 x 670 m)
- shelf and tub lighting
- tempered glass side panels and shelf
- sales space 0.61 m²
- temperature area +2...+4 °C
- digital temperature regulation
- ventilator speed regulator
- easy to clean

EXTRA ACCESSORIES (can be ordered separately):

- sneeze guard for shelf
- price tag frame;
- evaporation



Chilled display Metos Green OE-80-72-E-R290

| | |
|----------------------------|----------------|
| Product capacity | 2x GN1/1 |
| Item width mm | 800 |
| Item depth mm | 695 |
| Item height mm | 720/1395 |
| Package volume | 1.738 |
| Unit of volume | m3 |
| Package volume | 1.738 m3 |
| Package length | 110 |
| Package width | 100 |
| Package height | 158 |
| Package unit of dimension | cm |
| Package dimensions (LxWxH) | 110x100x158 cm |
| Net weight | 155 |
| Net weight | 155 kg |
| Gross weight | 180 |
| Package weight | 180 kg |
| Unit of weight | kg |
| Connection power kW | 0.586 |
| Fuse Size A | 10 |
| Connection voltage V | 230 |
| Number of phases | 1NPE |
| Frequency Hz | 50 |
| Drain diameter | 30 |
| Cooling capacity W | 920 |
| Type of the refrigerant | R290 |
| Sound level dB | 70 |
| Energy class rating | E |

Chilled display Metos Green OE-80-89-E-R290

Metos Green OE-80-89-E is a recessed, self-serve chilled display designed for use under demanding conditions, with a width of 800 mm and height of 890 mm. The simple squared shape of the chilled display highlights the products being sold.

The display's tempered glass side panels, the glass shelf and the bright LED lighting for shelves and the cold tub make products being sold highly visible. The self-service display is open on the customer side, with hinged glass doors on the seller's side. A 215 mm high cooled tub with Gastronorm dimensioning.

In addition, the display is equipped with an auto-defrost function, the melting water from which is directed to the grey water system. For those installation locations where it is not possible to connect the display to the grey water system, an condensate evaporation tank is included as an accessory.

The display is equipped with air cooled chilling, digital temperature control and a fan speed regulator. Air temperature range is +2...+4 °C. The glass side panels and glass shelf is made from tempered glass. The substructure is made from stainless steel and insulation is polyurethane.

- recessable into furniture (cut out size 740 x 670 m)
- shelf and tub lighting
- tempered glass side panels and shelf
- sales space 0.74 m²
- temperature area +2...+4 °C
- digital temperature regulation
- ventilator speed regulator
- easy to clean

EXTRA ACCESSORIES (can be ordered separately):

- sneeze guard for shelf
- price tag frame;
- evaporation



Chilled display Metos Green OE-80-89-E-R290

| | |
|----------------------------|--------------------|
| Product capacity | 2x GN1/1+3 shelves |
| Item width mm | 800 |
| Item depth mm | 695 |
| Item height mm | 890/1565 |
| Package volume | 1.925 |
| Unit of volume | m3 |
| Package volume | 1.925 m3 |
| Package length | 110 |
| Package width | 100 |
| Package height | 175 |
| Package unit of dimension | cm |
| Package dimensions (LxWxH) | 110x100x175 cm |
| Net weight | 175 |
| Net weight | 175 kg |
| Gross weight | 195 |
| Package weight | 195 kg |
| Unit of weight | kg |
| Connection power kW | 0.844 |
| Fuse Size A | 10 |
| Connection voltage V | 230 |
| Number of phases | 1NPE |
| Frequency Hz | 50 |
| Drain diameter | 30 |
| Cooling capacity W | 1570 |
| Type of the refrigerant | R290 |
| Sound level dB | 70 |
| Energy class rating | F |

CODE: MG4310323

Display unit Metos Kentucky Cold 2GN self-service

Shelf service open unit. Forced air cooling



Full description

Technical specifications

Shelf service open unit. Forced air cooling

- temperature range +2 - 6 C
- automatic defrosting
- lightning from top
- stainless steel construction

Extra accessories:

- mirrored back door
- cutting board

GENERAL

| | |
|-------------|---|
| Description | Display unit Metos Kentucky Cold 2GN self-service |
|-------------|---|

DIMENSIONS AND CAPACITY

| | |
|----------------------------|-------------|
| Product capacity | two shelves |
| Item width mm | 750 |
| Item depth mm | 730 |
| Item height mm | 575 |
| Package volume | 0.387 m3 |
| Package dimensions (LxWxH) | 80x78x62 cm |
| Net weight | 84 kg |
| Package weight | 94 kg |

TECHNICAL INFORMATION

| | |
|-------------------------------|---------|
| Connection power kW | 0.33 |
| Fuse Size A | 6 |
| Connection voltage V | 230 |
| Number of phases | 1N |
| Frequency Hz | 50 |
| Type of electrical connection | Plug |
| Electrical conn. height mm | 25 |
| Type of the refrigerant | R1234YF |

CODE: MG4310325

Display unit Metos Kentucky Cold 3GN self-service

Shelf service open unit. Forced air cooling



Full description

Technical specifications

Shelf service open unit. Forced air cooling

- temperature range +2 - 6 C
- automatic defrosting
- lightning from top
- stainless steel construction

Accessories with extra price:

- mirrored back door
- cutting board

GENERAL

| | |
|-------------|---|
| Description | Display unit Metos Kentucky Cold 3GN self-service |
|-------------|---|

DIMENSIONS AND CAPACITY

| | |
|----------------------------|-------------|
| Product capacity | two shelves |
| Item width mm | 1080 |
| Item depth mm | 730 |
| Item height mm | 575 |
| Package volume | 0.476 m3 |
| Package dimensions (LxWxH) | 80x85x70 cm |
| Net weight | 105 kg |
| Package weight | 115 kg |

TECHNICAL INFORMATION

| | |
|-------------------------------|---------|
| Connection power kW | 0.48 |
| Fuse Size A | 6 |
| Connection voltage V | 230 |
| Number of phases | 1N |
| Frequency Hz | 50 |
| Type of electrical connection | Plug |
| Electrical conn. height mm | 25 |
| Type of the refrigerant | R1234YF |

Chilled display Metos Green GE-145-71-E

Metos Green GE-145-71-E is a recessable into furniture, seller-served chilled display, designed for use under demanding conditions, with a width of 1450 mm and height of 710 mm. The simple angular shape of the chilled display highlights the products being sold.

The display's tempered glass side panels, the glass shelf and the bright LED lighting for shelves and the cold tub make products being sold highly visible. In addition, the front glass of the display serviced by the seller provides a panoramic view of the products inside. The seller's side is equipped with handy sliding doors. The glass shelf can be regulated +/-25 mm and can be angled, which simplifies product selection. A 215 mm adjustable height cooled tub with Gastronorm dimensioning.

A great deal of attention has been paid to simplifying the cleaning of the Metos Green GE-145-71-E display. The display portion lacks virtually any seams and is easy to wipe clean. The tub's plates, which are made of stainless steel, can be removed and lifted up in order to clean the evaporator element. In addition, the display is equipped with an auto-defrost function, the melting water from which is directed to the grey water system. For those installation locations where it is not possible to connect the display to the grey water system, an evaporation tank is included as an accessory.

The display is equipped with air cooled chilling, digital temperature control and ventilator speed regulator. Temperature can be regulated between +2 °C...+4 °C. The front glass, side glass panels and the glass



shelf are made from tempered glass. The substructure is made from stainless steel and insulation is polyurethane.

- recessable into furniture (cut out size 1390 x 670 m)
- shelf and tub lighting
- tempered front glass, side panels and shelf
- sales space 1,65 m²
- temperature can be regulated between +2 °C...+4 °C.
- digital temperature regulation
- ventilator speed regulator

EXTRA ACCESSORIES (can be ordered separately):

- base; Open stand or Tubular body stand
- price tag frame
- door locks
- evaporation tank; Manual or Electrical 1000W
- remote cooled model shelf are made from tempered glass. The substructure is made from stainless steel and insulation is polyurethane.

- recessable into furniture (cut out size 1390 x 670 m)
- shelf and tub lighting
- tempered front glass, side panels and shelf
- sales space 1,65 m²
- temperature can be regulated between +2 °C...+4 °C.
- digital temperature regulation
- ventilator speed regulator

EXTRA ACCESSORIES (can be ordered separately):

- base; Open stand or Tubular body stand
- price tag frame
- door locks
- evaporation tank; Manual or Electrical 1000W
- remote cooled model

Chilled display Metos Green GE-145-71-E

| | |
|----------------------------|----------------|
| Product capacity | 4 x GN1/1 |
| Item width mm | 1450 |
| Item depth mm | 695 |
| Item height mm | 710/1390 |
| Package volume | 0.788 |
| Unit of volume | m3 |
| Package volume | 0.788 m3 |
| Package length | 170 |
| Package width | 100 |
| Package height | 173 |
| Package unit of dimension | cm |
| Package dimensions (LxWxH) | 170x100x173 cm |
| Net weight | 310 |
| Net weight | 310 kg |
| Gross weight | 330 |
| Package weight | 330 kg |
| Unit of weight | kg |
| Connection power kW | 0.31 |
| Fuse Size A | 10 |
| Connection voltage V | 230 |
| Number of phases | 1NPE |
| Frequency Hz | 50 |
| Cooling capacity W | 590 |
| Type of the refrigerant | R290 |
| Sound level dB | 70 |
| Daily power cons. kWh | 4.47 |

Chilled display Metos Green GE-112-54-E-R290

Metos Green GE-112-54-E is a recessable into furniture, seller-served chilled display, designed for use under demanding conditions, with a width of 1120 mm and height of 540 mm. The simple angular shape of the chilled display highlights the products being sold.

The display's tempered glass side panels, the glass shelf and the bright LED lighting for shelves and the cold tub make products being sold highly visible. In addition, the front glass of the display serviced by the seller provides a panoramic view of the products inside. The seller's side is equipped with handy sliding doors. The glass shelf can be regulated +/-25 mm and can be angled, which simplifies product selection. A 215 mm adjustable height cooled tub with Gastronorm dimensioning.

A great deal of attention has been paid to simplifying the cleaning of the Metos Green GE-112-54-E display. The display portion lacks virtually any seams and is easy to wipe clean. The tub's plates, which are made of stainless steel, can be removed and lifted up in order to clean the evaporator element. In addition, the display is equipped with an auto-defrost function, the melting water from which is directed to the grey water system. For those installation locations where it is not possible to connect the display to the grey water system, an evaporation tank is included as an accessory.

The display is equipped with air cooled chilling, digital temperature control and ventilator speed regulator. Temperature can be regulated between +2 °C...+4 °C. The front glass, side glass panels and the glass shelf



are made from tempered glass. The substructure is made from stainless steel and insulation is polyurethane.

- recessable into furniture (cut out size 1065 x 670 m)
- shelf and tub lighting
- tempered front glass, side panels and shelf
- sales space 1,15 m²
- temperature can be regulated between +2°C...+4°C
- climate class 3M1
- digital temperature regulation
- ventilator speed regulator

EXTRA ACCESSORIES (can be ordered separately):

- base; Open stand or Tubular body stand
- price tag frame
- door locking
- evaporation tank; Manual or Electrical 1000W
- remote cooled model are made from tempered glass. The substructure is made from stainless steel and insulation is polyurethane.

- recessable into furniture (cut out size 1065 x 670 m)
- shelf and tub lighting
- tempered front glass, side panels and shelf
- sales space 1,15 m²
- temperature can be regulated between +2°C...+4°C
- climate class 3M1
- digital temperature regulation
- ventilator speed regulator

EXTRA ACCESSORIES (can be ordered separately):

- base; Open stand or Tubular body stand
- price tag frame
- door locking
- evaporation tank; Manual or Electrical 1000W
- remote cooled model

Chilled display Metos Green GE-112-54-E-R290

| | |
|----------------------------|-------------------------------|
| Product capacity | 3 x GN1/1 |
| Item width mm | 1125 |
| Item depth mm | 695 |
| Item height mm | 540/1220 |
| Package volume | 2.291 |
| Unit of volume | m ³ |
| Package volume | 2.291 m ³ |
| Package length | 145 |
| Package width | 100 |
| Package height | 158 |
| Package unit of dimension | cm |
| Package dimensions (LxWxH) | 145x100x158 cm |
| Net weight | 200 |
| Net weight | 200 kg |
| Gross weight | 220 |
| Package weight | 220 kg |
| Unit of weight | kg |
| Connection power kW | 0.296 |
| Fuse Size A | 10 |
| Connection voltage V | 230 |
| Number of phases | 1NPE |
| Frequency Hz | 50 |
| Drain diameter | 30 |
| Cooling capacity W | 490 |
| Type of the refrigerant | R290 |
| Remarks (refrigeration) | Climate class 3 |
| Sound level dB | 70 |
| Remarks (misc.) | installat. opening 1065x670mm |
| Energy class rating | B |

Chilled display Metos Green GE-112-71-E-R290

Metos Green GE-112-71-E is a recessable into furniture, seller-served chilled display, designed for use under demanding conditions, with a width of 1125 mm and height of 710 mm. The simple angular shape of the chilled display highlights the products being sold.

The display's tempered glass side panels, the glass shelf and the bright LED lighting for shelves and the cold tub make products being sold highly visible. In addition, the front glass of the display serviced by the seller provides a panoramic view of the products inside. The seller's side is equipped with handy sliding doors. The glass shelf can be regulated +/-25 mm and can be angled, which simplifies product selection. A 215 mm adjustable height cooled tub with Gastronorm dimensioning.

A great deal of attention has been paid to simplifying the cleaning of the Metos Green GE-112-71-E display. The display portion lacks virtually any seams and is easy to wipe clean. The tub's plates, which are made of stainless steel, can be removed and lifted up in order to clean the evaporator element. In addition, the display is equipped with an auto-defrost function, the melting water from which is directed to the grey water system. For those installation locations where it is not possible to connect the display to the grey water system, an evaporation tank is included as an accessory.

The display is equipped with air cooled chilling, digital temperature control and ventilator speed regulator. Temperature can be regulated between +2 °C...+4 °C. The front glass, side glass panels and the glass shelf



are made from tempered glass. The substructure is made from stainless steel and insulation is polyurethane.

- recessable into furniture (cut out size 1065 x 670 m)
- shelf and tub lighting
- tempered front glass, side panels and shelf
- sales space 0,82 m²
- temperature can be regulated between +2 °C...+4 °C
- climate class 3M1
- digital temperature regulation
- ventilator speed regulator

EXTRA ACCESSORIES (can be ordered separately):

- base; Open stand or Tubular body stand
- price tag frame
- door locking
- evaporation tank; Manual or Electrical 1000W
- remote cooled model are made from tempered glass. The substructure is made from stainless steel and insulation is polyurethane.

- recessable into furniture (cut out size 1065 x 670 m)
- shelf and tub lighting
- tempered front glass, side panels and shelf
- sales space 0,82 m²
- temperature can be regulated between +2 °C...+4 °C
- climate class 3M1
- digital temperature regulation
- ventilator speed regulator

EXTRA ACCESSORIES (can be ordered separately):

- base; Open stand or Tubular body stand
- price tag frame
- door locking
- evaporation tank; Manual or Electrical 1000W
- remote cooled model

Chilled display Metos Green GE-112-71-E-R290

| | |
|----------------------------|-------------------------------|
| Product capacity | 3 x GN1/1 |
| Item width mm | 1125 |
| Item depth mm | 695 |
| Item height mm | 710/1390 |
| Package volume | 2.291 |
| Unit of volume | m3 |
| Package volume | 2.291 m3 |
| Package length | 145 |
| Package width | 100 |
| Package height | 158 |
| Package unit of dimension | cm |
| Package dimensions (LxWxH) | 145x100x158 cm |
| Net weight | 230 |
| Net weight | 230 kg |
| Gross weight | 250 |
| Package weight | 250 kg |
| Unit of weight | kg |
| Connection power kW | 0.308 |
| Fuse Size A | 10 |
| Connection voltage V | 230 |
| Number of phases | 1NPE |
| Frequency Hz | 50 |
| Drain diameter | 30 |
| Cooling capacity W | 490 |
| Type of the refrigerant | R290 |
| Remarks (refrigeration) | Climate class 3 |
| Sound level dB | 70 |
| Remarks (misc.) | installat. opening 1065x670mm |
| Energy class rating | C |

Chilled display Metos Green GE-145-88-E-R290

Metos Green GE-145-88-E is a recessable into furniture, seller-served chilled display, designed for use under demanding conditions, with a width of 1450 mm and height of 880 mm. The simple angular shape of the chilled display highlights the products being sold.

The display's tempered glass side panels, the glass shelf and the bright LED lighting for shelves and the cold tub make products being sold highly visible. In addition, the front glass of the display serviced by the seller provides a panoramic view of the products inside. The seller's side is equipped with handy sliding doors. The glass shelf can be regulated +/-25 mm and can be angled, which simplifies product selection. A 215 mm adjustable height cooled tub with Gastronorm dimensioning.

A great deal of attention has been paid to simplifying the cleaning of the Metos Green GE-145-88-E display. The display portion lacks virtually any seams and is easy to wipe clean. The tub's plates, which are made of stainless steel, can be removed and lifted up in order to clean the evaporator element. In addition, the display is equipped with an auto-defrost function, the melting water from which is directed to the grey water system. For those installation locations where it is not possible to connect the display to the grey water system, an evaporation tank is included as an accessory.

The display is equipped with air cooled chilling, digital temperature control and ventilator speed regulator. Temperature can be regulated between +2 °C...+4 °C. The front glass, side glass panels and the glass shelf



are made from tempered glass. The substructure is made from stainless steel and insulation is polyurethane.

- recessable into furniture (cut out size 1390 x 670 m)
- shelf and tub lighting
- tempered front glass, side panels and shelf
- sales space 1,31 m²
- temperature can be regulated between +2 °C...+4 °C
- climate class 3M1
- digital temperature regulation
- ventilator speed regulator

EXTRA ACCESSORIES (can be ordered separately):

- base; Open stand or Tubular body stand
- price tag frame
- door locking
- evaporation tank; Manual or Electrical 1000W
- remote cooled model are made from tempered glass. The substructure is made from stainless steel and insulation is polyurethane.

- recessable into furniture (cut out size 1390 x 670 m)
- shelf and tub lighting
- tempered front glass, side panels and shelf
- sales space 1,31 m²
- temperature can be regulated between +2 °C...+4 °C
- climate class 3M1
- digital temperature regulation
- ventilator speed regulator

EXTRA ACCESSORIES (can be ordered separately):

- base; Open stand or Tubular body stand
- price tag frame
- door locking
- evaporation tank; Manual or Electrical 1000W
- remote cooled model

Chilled display Metos Green GE-145-88-E-R290

| | |
|----------------------------|-------------------------------|
| Product capacity | 4x GN1/1 |
| Item width mm | 1450 |
| Item depth mm | 695 |
| Item height mm | 880/1605 |
| Package volume | 2.8 |
| Unit of volume | m3 |
| Package volume | 2.8 m3 |
| Package length | 160 |
| Package width | 100 |
| Package height | 175 |
| Package unit of dimension | cm |
| Package dimensions (LxWxH) | 160x100x175 cm |
| Net weight | 260 |
| Net weight | 260 kg |
| Gross weight | 290 |
| Package weight | 290 kg |
| Unit of weight | kg |
| Connection power kW | 0.417 |
| Fuse Size A | 10 |
| Connection voltage V | 230 |
| Number of phases | 1NPE |
| Frequency Hz | 50 |
| Drain diameter | 30 |
| Cooling capacity W | 700 |
| Type of the refrigerant | R290 |
| Remarks (refrigeration) | Climate class 3 |
| Sound level dB | 70 |
| Remarks (misc.) | installat. opening 1065x670mm |
| Energy class rating | C |

Chilled display Metos Green GE-145-54-E-R290

Metos Green GE-145-54-E is a recessable into furniture, seller-served chilled display, designed for use under demanding conditions, with a width of 1450 mm and height of 540 mm. The simple angular shape of the chilled display highlights the products being sold.

The display's tempered glass side panels, the glass shelf and the bright LED lighting for shelves and the cold tub make products being sold highly visible. In addition, the front glass of the display serviced by the seller provides a panoramic view of the products inside. The seller's side is equipped with handy sliding doors. The glass shelf can be regulated +/-25 mm and can be angled, which simplifies product selection. A 215 mm adjustable height cooled tub with Gastronorm dimensioning.

A great deal of attention has been paid to simplifying the cleaning of the Metos Green GE-145-54-E display. The display portion lacks virtually any seams and is easy to wipe clean. The tub's plates, which are made of stainless steel, can be removed and lifted up in order to clean the evaporator element. In addition, the display is equipped with an auto-defrost function, the melting water from which is directed to the grey water system. For those installation locations where it is not possible to connect the display to the grey water system, an evaporation tank is included as an accessory.

The display is equipped with air cooled chilling, digital temperature control and ventilator speed regulator. Temperature can be regulated between +2 °C...+4 °C. The front glass, side glass panels and the glass shelf



are made from tempered glass. The substructure is made from stainless steel and insulation is polyurethane.

- recessable into furniture (cut out size 1390 x 670 m)
- shelf and tub lighting
- tempered front glass, side panels and shelf
- sales space 1,42 m²
- temperature can be regulated between +2 °C...+4 °C
- climate class 3M1
- digital temperature regulation
- ventilator speed regulator

EXTRA ACCESSORIES (can be ordered separately):

- base; Open stand or Tubular body stand
- price tag frame
- door locking
- evaporation tank; Manual or Electrical 1000W
- remote cooled model are made from tempered glass. The substructure is made from stainless steel and insulation is polyurethane.

- recessable into furniture (cut out size 1390 x 670 m)
- shelf and tub lighting
- tempered front glass, side panels and shelf
- sales space 1,42 m²
- temperature can be regulated between +2 °C...+4 °C
- climate class 3M1
- digital temperature regulation
- ventilator speed regulator

EXTRA ACCESSORIES (can be ordered separately):

- base; Open stand or Tubular body stand
- price tag frame
- door locking
- evaporation tank; Manual or Electrical 1000W
- remote cooled model

Chilled display Metos Green GE-145-54-E-R290

| | |
|----------------------------|-------------------------------|
| Product capacity | 4 x GN1/1 |
| Item width mm | 1450 |
| Item depth mm | 695 |
| Item height mm | 540/1220 |
| Package volume | 2.765 |
| Unit of volume | m ³ |
| Package volume | 2.765 m ³ |
| Package length | 175 |
| Package width | 100 |
| Package height | 158 |
| Package unit of dimension | cm |
| Package dimensions (LxWxH) | 175x100x158 cm |
| Net weight | 250 |
| Net weight | 250 kg |
| Gross weight | 270 |
| Package weight | 270 kg |
| Unit of weight | kg |
| Connection power kW | 0.319 |
| Fuse Size A | 10 |
| Connection voltage V | 230 |
| Number of phases | 1NPE |
| Frequency Hz | 50 |
| Drain diameter | 30 |
| Cooling capacity W | 490 |
| Type of the refrigerant | R290 |
| Remarks (refrigeration) | Climate class 3 |
| Sound level dB | 70 |
| Remarks (misc.) | installat. opening 1390x670mm |
| Energy class rating | B |

Chilled display Metos Green GE-112-88-E-R290

Metos Green GE-112-88-E is a recessable into furniture, seller-served chilled display, designed for use under demanding conditions, with a width of 1125 mm and height of 880 mm. The simple angular shape of the chilled display highlights the products being sold.

The display's tempered glass side panels, the glass shelf and the bright LED lighting for shelves and the cold tub make products being sold highly visible. In addition, the front glass of the display serviced by the seller provides a panoramic view of the products inside. The seller's side is equipped with handy sliding doors. The glass shelf can be regulated +/-25 mm and can be angled, which simplifies product selection. A 215 mm adjustable height cooled tub with Gastronorm dimensioning.

A great deal of attention has been paid to simplifying the cleaning of the Metos Green GE-112-88-E display. The display portion lacks virtually any seams and is easy to wipe clean. The tub's plates, which are made of stainless steel, can be removed and lifted up in order to clean the evaporator element. In addition, the display is equipped with an auto-defrost function, the melting water from which is directed to the grey water system. For those installation locations where it is not possible to connect the display to the grey water system, an evaporation tank is included as an accessory.

The display is equipped with air cooled chilling, digital temperature control and ventilator speed regulator. Temperature can be regulated between +2 °C...+4 °C. The front glass, side glass panels and the glass shelf



are made from tempered glass. The substructure is made from stainless steel and insulation is polyurethane.

- recessable into furniture (cut out size 1065 x 670 m)
- shelf and tub lighting
- tempered front glass, side panels and shelf
- sales space 1,1 m²
- temperature can be regulated between +2 °C...+4 °C
- climate class 3M1
- digital temperature regulation
- ventilator speed regulator

EXTRA ACCESSORIES (can be ordered separately):

- base; Open stand or Tubular body stand
- price tag frame
- door locking
- evaporation tank; Manual or Electrical 1000W
- remote cooled model are made from tempered glass. The substructure is made from stainless steel and insulation is polyurethane.

- recessable into furniture (cut out size 1065 x 670 m)
- shelf and tub lighting
- tempered front glass, side panels and shelf
- sales space 1,1 m²
- temperature can be regulated between +2 °C...+4 °C
- climate class 3M1
- digital temperature regulation
- ventilator speed regulator

EXTRA ACCESSORIES (can be ordered separately):

- base; Open stand or Tubular body stand
- price tag frame
- door locking
- evaporation tank; Manual or Electrical 1000W
- remote cooled model

Chilled display Metos Green GE-112-88-E-R290

| | |
|----------------------------|-------------------------------|
| Product capacity | 3 x GN1/1 |
| Item width mm | 1125 |
| Item depth mm | 695 |
| Item height mm | 880/1560 |
| Package volume | 2.291 |
| Unit of volume | m3 |
| Package volume | 2.291 m3 |
| Package length | 145 |
| Package width | 100 |
| Package height | 158 |
| Package unit of dimension | cm |
| Package dimensions (LxWxH) | 145x100x158 cm |
| Net weight | 230 |
| Net weight | 230 kg |
| Gross weight | 250 |
| Package weight | 250 kg |
| Unit of weight | kg |
| Connection power kW | 0.342 |
| Fuse Size A | 10 |
| Connection voltage V | 230 |
| Number of phases | 1NPE |
| Frequency Hz | 50 |
| Drain diameter | 30 |
| Cooling capacity W | 590 |
| Type of the refrigerant | R290 |
| Remarks (refrigeration) | Climate class 3 |
| Sound level dB | 70 |
| Remarks (misc.) | installat. opening 1065x670mm |
| Energy class rating | C |

Chilled display Metos Green GE-80-71-E R290

Metos Green GE-80-71-E is a recessable into furniture, seller-served chilled display, designed for use under demanding conditions, with a width of 800 mm and height of 710 mm. The simple angular shape of the chilled display highlights the products being sold.

The display's tempered glass side panels, the glass shelf and the bright LED lighting for shelves and the cold tub make products being sold highly visible. In addition, the front glass of the display serviced by the seller provides a panoramic view of the products inside. The seller's side is equipped with handy sliding doors. The glass shelf can be regulated +/-25 mm and can be angled, which simplifies product selection. A 215 mm adjustable height cooled tub with Gastronorm dimensioning.

A great deal of attention has been paid to simplifying the cleaning of the Metos Green GE-80-71-E display. The display portion lacks virtually any seams and is easy to wipe clean. The tub's plates, which are made of stainless steel, can be removed and lifted up in order to clean the evaporator element. In addition, the display is equipped with an auto- defrost function, the melting water from which is directed to the grey water system. For those installation locations where it is not possible to connect the display to the grey water system, an evaporation tank is included as an accessory.

The display is equipped with air cooled chilling, digital temperature control and ventilator speed regulator. Temperature can be regulated between +2 °C...+4 °C. The front glass, side glass panels and the glass shelf



are made from tempered glass. The substructure is made from stainless steel and insulation is polyurethane.

- recessable into furniture (cut out size 740 x 670 m)
- shelf and tub lighting
- tempered front glass, side panels and shelf
- sales space 0.67 m²
- temperature can be regulated between +2 °C...+4 °C
- climate class 3M1
- digital temperature regulation
- ventilator speed regulator

EXTRA ACCESSORIES (can be ordered separately):

- base; Open stand or Tubular body stand
- price tag frame
- door locks
- evaporation tank; Manual or Electrical 1000W
- remote cooled model are made from tempered glass. The substructure is made from stainless steel and insulation is polyurethane.

- recessable into furniture (cut out size 740 x 670 m)
- shelf and tub lighting
- tempered front glass, side panels and shelf
- sales space 0.67 m²
- temperature can be regulated between +2 °C...+4 °C
- climate class 3M1
- digital temperature regulation
- ventilator speed regulator

EXTRA ACCESSORIES (can be ordered separately):

- base; Open stand or Tubular body stand
- price tag frame
- door locks
- evaporation tank; Manual or Electrical 1000W
- remote cooled model

Chilled display Metos Green GE-80-71-E R290

| | |
|----------------------------|--------------------------------|
| Product capacity | 2x GN1/1 |
| Item width mm | 800 |
| Item depth mm | 695 |
| Item height mm | 710/1390 |
| Package volume | 1.738 |
| Unit of volume | m3 |
| Package volume | 1.738 m3 |
| Package length | 110 |
| Package width | 100 |
| Package height | 158 |
| Package unit of dimension | cm |
| Package dimensions (LxWxH) | 110x100x158 cm |
| Net weight | 180 |
| Net weight | 180 kg |
| Gross weight | 200 |
| Package weight | 200 kg |
| Unit of weight | kg |
| Connection power kW | 0.29 |
| Fuse Size A | 10 |
| Connection voltage V | 230 |
| Number of phases | 1NPE |
| Frequency Hz | 50 |
| Drain diameter | 30 |
| Cooling capacity W | 490 |
| Type of the refrigerant | R290 |
| Remarks (refrigeration) | Climate class 3 |
| Sound level dB | 70 |
| Remarks (misc.) | installation opening 740x670mm |
| Energy class rating | B |

Chilled display Metos Green GE-80-88-E-R290

Metos Gastro GE-80-88-E is a recessable into furniture, seller-served chilled display, designed for use under demanding conditions, with a width of 800 mm and height of 880 mm. The simple angular shape of the chilled display highlights the products being sold.

The display's tempered glass side panels, the glass shelf and the bright LED lighting for shelves and the cold tub make products being sold highly visible. In addition, the front glass of the display serviced by the seller provides a panoramic view of the products inside. The seller's side is equipped with handy sliding doors. The glass shelf can be regulated +/-25 mm and can be angled, which simplifies product selection. A 215 mm adjustable height cooled tub with Gastronorm dimensioning.

A great deal of attention has been paid to simplifying the cleaning of the Metos Gastro GE-80-88-E display. The display portion lacks virtually any seams and is easy to wipe clean. The tub's plates, which are made of stainless steel, can be removed and lifted up in order to clean the evaporator element. For those installation locations where it is not possible to connect the display to the grey water system, an evaporation tank is included as an accessory.

The display is equipped with air cooled chilling, digital temperature control and ventilator speed regulator. Temperature can be regulated between +2 °C...+4 °C. The front glass, side glass panels and the glass shelf are made from tempered glass. The substructure is made from stainless steel and insulation is polyurethane.

- recessable



into furniture (cut out size 740 x 670 m)

- shelf and tub lighting
- tempered front glass, side panels and shelf
- sales space 0,89 m²
- temperature can be regulated between +2 °C...+4 °C
- climate class 3M1
- digital temperature regulation
- ventilator speed regulator

EXTRA ACCESSORIES (can be ordered separately):

- base; Open stand or Tubular body stand
- price tag frame;
- door locks;
- evaporation tank; Manual or Electrical 1000W
- remote cooled model into furniture (cut out size 740 x 670 m)
- shelf and tub lighting
- tempered front glass, side panels and shelf
- sales space 0,89 m²
- temperature can be regulated between +2 °C...+4 °C
- climate class 3M1
- digital temperature regulation
- ventilator speed regulator

EXTRA ACCESSORIES (can be ordered separately):

- base; Open stand or Tubular body stand
- price tag frame;
- door locks;
- evaporation tank; Manual or Electrical 1000W
- remote cooled model

Chilled display Metos Green GE-80-88-E-R290

| | |
|----------------------------|----------------------|
| Product capacity | 2x GN1/1 |
| Item width mm | 800 |
| Item depth mm | 695 |
| Item height mm | 880/1560 |
| Package volume | 2.252 |
| Unit of volume | m ³ |
| Package volume | 2.252 m ³ |
| Package length | 110 |
| Package width | 105 |
| Package height | 195 |
| Package unit of dimension | cm |
| Package dimensions (LxWxH) | 110x105x195 cm |
| Net weight | 210 |
| Net weight | 210 kg |
| Gross weight | 230 |
| Package weight | 230 kg |
| Unit of weight | kg |
| Connection power kW | 0.314 |
| Fuse Size A | 10 |
| Connection voltage V | 230 |
| Number of phases | 1NPE |
| Frequency Hz | 50 |
| Drain diameter | 30 |
| Cooling capacity W | 590 |
| Type of the refrigerant | R290 |
| Sound level dB | 70 |
| Energy class rating | B |

CODE: MG4000288

Drop-in Hot display Metos W GR-112-53

Hot display cases, drop-in hot displays(cut-out size 1105x670 mm), closed front, height 530 mm, curved.



Full description

Technical specifications

Hot display cases, drop-in hot displays(cut-out size 1105x670 mm), closed front, height 530 mm, curved.

- Customer side: Tempered front glass
- Operator side: Insulated glass hinged doors for model
- Shelf made of tempered black glass.
- Side panes are tempered.
- Surrounding mounting flange.
- Heating system: Quartz-Infrared heaters per presentation level ensure an optimal core temperature of your goods.
- Heating plate: Heated base deck made from tempered black glass with heating element below and stainless steel frame.
- Temperature range adjustable stepless via electronic thermostat.
- Control unit with digital temperature display mounted in the terminal box, supplied loose.

GENERAL

| | |
|-------------|---------------------------------------|
| Description | Drop-in Hot display Metos W GR-112-53 |
|-------------|---------------------------------------|

DIMENSIONS AND CAPACITY

| | |
|----------------------------|----------------------|
| Product capacity | display area 1,00 m2 |
| Item width mm | 1125 |
| Item depth mm | 695 |
| Item height mm | 530/630 |
| Package volume | 1.784 m3 |
| Package dimensions (LxWxH) | 145x100x123 cm |
| Net weight | 209 kg |
| Package weight | 234 kg |

TECHNICAL INFORMATION

| | |
|---------------------------|--------|
| Connection power kW | 1.75 |
| Connection voltage V | 230 |
| Number of phases | 1NPE |
| Frequency Hz | 50 |
| Type of the refrigerant | R-134a |
| Quantity of refrigerant g | 370 |

FEATURES

| | |
|---------------------|----------------|
| Function | warm |
| Temperature area °C | +65°C to +85°C |
| Lighting | LED |

INSTALLATION

| | |
|-----------------|----------|
| Installation | drop-in |
| Opening size mm | 1105x670 |

Chilled display Metos Green GE-80-54-E R290

Metos Green GE-80-54-E is a recessable into furniture, seller-served chilled display, designed for use under demanding conditions, with a width of 800 mm and height of 540 mm. The simple angular shape of the chilled display highlights the products being sold.

The display's tempered glass side panels, the glass shelf and the bright LED lighting for shelves and the cold tub make products being sold highly visible. In addition, the front glass of the display serviced by the seller provides a panoramic view of the products inside. The seller's side is equipped with handy sliding doors. The glass shelf can be regulated +/-25 mm and can be angled, which simplifies product selection. A 215 mm adjustable height cooled tub with Gastronorm dimensioning.

A great deal of attention has been paid to simplifying the cleaning of the Metos Green GE-80-54-E display. The display portion lacks virtually any seams and is easy to wipe clean. The tub's plates, which are made of stainless steel, can be removed and lifted up in order to clean the evaporator element. In addition, the display is equipped with an auto-defrost function, the melting water from which is directed to the grey water system. For those installation locations where it is not possible to connect the display to the grey water system, an evaporation tank is included as an accessory.

The display is equipped with air cooled chilling, digital temperature control and ventilator speed regulator. Temperature can be regulated between +2 °C...+4 °C. The front glass, side glass panels and the glass shelf



are made from tempered glass. The substructure is made from stainless steel and insulation is polyurethane.

- recessable into furniture (cut out size 740 x 670 m)
- shelf and tub lighting
- tempered front glass, side panels and shelf
- sales space 0.88 m²
- temperature can be regulated between +2 °C...+4 °C.
- climate class 3M1
- digital temperature regulation
- ventilator speed regulator

EXTRA ACCESSORIES (can be ordered separately):

- base; Open stand or Tubular body stand
- price tag frame
- door locks
- evaporation tank; Manual or Electrical 1000W
- remote cooled model are made from tempered glass. The substructure is made from stainless steel and insulation is polyurethane.

- recessable into furniture (cut out size 740 x 670 m)
- shelf and tub lighting
- tempered front glass, side panels and shelf
- sales space 0.88 m²
- temperature can be regulated between +2 °C...+4 °C.
- climate class 3M1
- digital temperature regulation
- ventilator speed regulator

EXTRA ACCESSORIES (can be ordered separately):

- base; Open stand or Tubular body stand
- price tag frame
- door locks
- evaporation tank; Manual or Electrical 1000W
- remote cooled model

Chilled display Metos Green GE-80-54-E R290

| | |
|----------------------------|--------------------------------|
| Product capacity | 2x GN1/1 |
| Item width mm | 800 |
| Item depth mm | 695 |
| Item height mm | 540/1220 |
| Package volume | 1.738 |
| Unit of volume | m3 |
| Package volume | 1.738 m3 |
| Package length | 110 |
| Package width | 100 |
| Package height | 158 |
| Package unit of dimension | cm |
| Package dimensions (LxWxH) | 110x100x158 cm |
| Net weight | 170 |
| Net weight | 170 kg |
| Gross weight | 190 |
| Package weight | 190 kg |
| Unit of weight | kg |
| Connection power kW | 0.211 |
| Fuse Size A | 10 |
| Connection voltage V | 230 |
| Number of phases | 1NPE |
| Frequency Hz | 50 |
| Drain diameter | 30 |
| Cooling capacity W | 340 |
| Type of the refrigerant | R290 |
| Remarks (refrigeration) | Climate class 3 |
| Sound level dB | 70 |
| Remarks (misc.) | installation opening 740x670mm |
| Energy class rating | B |

Refrigerated display Metos VK38-120 with R600A

The cold basin Metos VK38-120 is convenient and lightweight, small in space and easily movable. The basin can be placed on the table or installed in the working space by means of the support legs or shelf above the table level, providing the raw materials easily at hand..

The capacity of the cold basin VK38-120 is for four GN 1/3 dishes. The glass part on the bottom of the basin protects the raw materials from splashing. The device has a clear digital display and its temperature is adjustable between +2°C...+10°C . The structure of the basin is made of stainless steel, the glass part is of impact-resistant glass.

- capacity 4xGN1/3
- temperature adjustment +2°C...+10°C.
- static cooling
- manual thawing
- electronic thermostat
- device stainless steel SS304, glass part of impact-resistant glass.
- 4 adjustable legs

ACCESSORIES (ordered separately)

- GN dishes
- basin lid is of stainless steel



Refrigerated display Metos VK38-120 with R600A

| | |
|----------------------------|----------------------|
| Product capacity | 4xGN1/3 |
| Item width mm | 1200 |
| Item depth mm | 395 |
| Item height mm | 225/425 |
| Package volume | 0.175 |
| Unit of volume | m ³ |
| Package volume | 0.175 m ³ |
| Package length | 128 |
| Package width | 44 |
| Package height | 31 |
| Package unit of dimension | cm |
| Package dimensions (LxWxH) | 128x44x31 cm |
| Net weight | 28 |
| Net weight | 28 kg |
| Gross weight | 30 |
| Package weight | 30 kg |
| Unit of weight | kg |
| Connection power kW | 0.34 |
| Fuse Size A | 13 |
| Connection voltage V | 220-240 |
| Number of phases | 1NPE |
| Frequency Hz | 50 |
| Protection rating (IP) | 20 |
| Drain diameter | 24 |
| Drain conn. height mm | 228 |
| Floor drain needed | Yes |
| Type of the refrigerant | R600A |
| Quantity of refrigerant g | 40 |
| Sound level dB | 47 |

Refrigerated display Metos VK38-150 with R600A

The cold basin Metos VK38-150 is convenient and lightweight, small in space and easily movable. The basin can be placed on the table or installed in the working space by means of the support legs or shelf above the table level, providing the raw materials easily at hand..

The capacity of the cold basin VK38-150 is for six GN 1/3 dishes. The glass part on the bottom of the basin protects the raw materials from splashing. The device has a clear digital display and its temperature is adjustable between +2°C...+10°C . The structure of the basin is made of stainless steel, the glass part is of impact-resistant glass.



- capacity 6xGN1/3
- temperature adjustment +2°C...+10°C.
- static cooling
- manual thawing
- electronic thermostat
- device stainless steel SS304, glass part of impact-resistant glass.
- 4 adjustable legs

ACCESSORIES (ordered separately)

- GN dishes
- basin lid is of stainless steel

Refrigerated display Metos VK38-150 with R600A

| | |
|----------------------------|--------------|
| Product capacity | 6xGN1/3 |
| Item width mm | 1500 |
| Item depth mm | 395 |
| Item height mm | 225 |
| Package volume | 0.216 |
| Unit of volume | m3 |
| Package volume | 0.216 m3 |
| Package length | 158 |
| Package width | 44 |
| Package height | 31 |
| Package unit of dimension | cm |
| Package dimensions (LxWxH) | 158x44x31 cm |
| Net weight | 31 |
| Net weight | 31 kg |
| Gross weight | 33 |
| Package weight | 33 kg |
| Unit of weight | kg |
| Connection power kW | 0.34 |
| Fuse Size A | 13 |
| Connection voltage V | 220-240 |
| Number of phases | 1NPE |
| Frequency Hz | 50 |
| Protection rating (IP) | 20 |
| Drain diameter | 24 |
| Drain conn. height mm | 228 |
| Floor drain needed | Yes |
| Type of the refrigerant | R600A |
| Quantity of refrigerant g | 40 |
| Sound level dB | 47 |

Display Metos Kentucky Cold 2GN 230V1~

Forced air cooling. Temperature range +2 - +6 C

- automatic defrosting
- lightning from top
- stainless steel construction



Display Metos Kentucky Cold 2GN 230V1~

| | |
|-------------------------------|-----------|
| Product capacity | one shelf |
| Item width mm | 750 |
| Item depth mm | 775 |
| Item height mm | 585 |
| Package volume | 0 |
| Unit of volume | m3 |
| Package volume | 0 m3 |
| Package length | 0 |
| Package width | 0 |
| Package height | 0 |
| Package unit of dimension | cm |
| Package dimensions (LxWxH) | 0x0x0 cm |
| Net weight | 84 |
| Net weight | 84 kg |
| Gross weight | 94 |
| Package weight | 94 kg |
| Unit of weight | kg |
| Connection power kW | 0.33 |
| Fuse Size A | 6 |
| Connection voltage V | 230 |
| Number of phases | 1N |
| Frequency Hz | 50 |
| Type of electrical connection | Plug |
| Electrical conn. height mm | 25 |
| Type of the refrigerant | R1234YF |

CODE: MG4310309

Display unit Metos Kentucky Cold 3GN High 230V1~

Forced air cooling. Temperature range +2 - +6 C



Full description

Technical specifications

Forced air cooling. Temperature range +2 - +6 C

- automatic defrosting
- lightning from top
- stainless steel construction

Accessories with extra price:

- mirrored back door
- cutting board

GENERAL

| | |
|-------------|--|
| Description | Display unit Metos Kentucky Cold 3GN High 230V1~ |
|-------------|--|

DIMENSIONS AND CAPACITY

| | |
|----------------------------|---------------|
| Product capacity | three shelves |
| Item width mm | 1080 |
| Item depth mm | 775 |
| Item height mm | 745 |
| Package volume | 0 m3 |
| Package dimensions (LxWxH) | 0x0x0 cm |
| Net weight | 95 kg |
| Package weight | 115 kg |

TECHNICAL INFORMATION

| | |
|-------------------------------|---------|
| Connection power kW | 0.48 |
| Fuse Size A | 6 |
| Connection voltage V | 230 |
| Number of phases | 1N |
| Frequency Hz | 50 |
| Type of electrical connection | Plug |
| Electrical conn. height mm | 25 |
| Type of the refrigerant | R1234YF |

Display unit Metos Kentucky Cold 1GN

Forced air cooling. Temperature range +2 - +6 C

- automatic defrosting
- lightning from top
- stainless steel construction



Display unit Metos Kentucky Cold 1GN

| | |
|-------------------------------|-----------|
| Product capacity | one shelf |
| Item width mm | 480 |
| Item depth mm | 775 |
| Item height mm | 585 |
| Package volume | 0 |
| Unit of volume | m3 |
| Package volume | 0 m3 |
| Package length | 0 |
| Package width | 0 |
| Package height | 0 |
| Package unit of dimension | cm |
| Package dimensions (LxWxH) | 0x0x0 cm |
| Net weight | 45 |
| Net weight | 45 kg |
| Gross weight | 50 |
| Package weight | 50 kg |
| Unit of weight | kg |
| Connection power kW | 0.24 |
| Fuse Size A | 6 |
| Connection voltage V | 230 |
| Number of phases | 1N |
| Frequency Hz | 50 |
| Type of electrical connection | Plug |
| Electrical conn. height mm | 25 |
| Type of the refrigerant | R1234YF |

Display Metos Kentucky Cold 3GN 230V1~

Forced air cooling. Temperature range +2 - +6 C

- automatic defrosting
- lightning from top
- stainless steel construction



Display Metos Kentucky Cold 3GN 230V1~

| | |
|-------------------------------|-----------|
| Product capacity | one shelf |
| Item width mm | 1080 |
| Item depth mm | 775 |
| Item height mm | 585 |
| Package volume | 0 |
| Unit of volume | m3 |
| Package volume | 0 m3 |
| Package length | 0 |
| Package width | 0 |
| Package height | 0 |
| Package unit of dimension | cm |
| Package dimensions (LxWxH) | 0x0x0 cm |
| Net weight | 75 |
| Net weight | 75 kg |
| Gross weight | 85 |
| Package weight | 85 kg |
| Unit of weight | kg |
| Connection power kW | 0.34 |
| Fuse Size A | 6 |
| Connection voltage V | 230 |
| Number of phases | 1N |
| Frequency Hz | 50 |
| Type of electrical connection | Plug |
| Electrical conn. height mm | 25 |
| Type of the refrigerant | R1234YF |

Display unit Metos Kentucky Cold 2GN High 230V1~

Forced air cooling. Temperature range +2 - +6 C

- automatic defrosting
- lightning from top
- stainless steel construction

Accessories with extra price:

- mirrored back door
- cutting board



Display unit Metos Kentucky Cold 2GN High 230V1~

| | |
|-------------------------------|---------------|
| Product capacity | three shelves |
| Item width mm | 750 |
| Item depth mm | 775 |
| Item height mm | 745 |
| Package volume | 0 |
| Unit of volume | m3 |
| Package volume | 0 m3 |
| Package length | 0 |
| Package width | 0 |
| Package height | 0 |
| Package unit of dimension | cm |
| Package dimensions (LxWxH) | 0x0x0 cm |
| Net weight | 84 |
| Net weight | 84 kg |
| Gross weight | 94 |
| Package weight | 94 kg |
| Unit of weight | kg |
| Connection power kW | 0.33 |
| Fuse Size A | 6 |
| Connection voltage V | 230 |
| Number of phases | 1N |
| Frequency Hz | 50 |
| Type of electrical connection | Plug |
| Electrical conn. height mm | 25 |
| Type of the refrigerant | R1234YF |

Neutral Tabletop Display

Metos Halo 1TR1200 LED

Round-shaped singlesided neutral tabletop display made of plexi glass. LED-light

- easy to clean
- two glass shelves made of hardened glass



Neutral Tabletop Display Metos Halo 1TR1200 LED

| | |
|-------------------------------|--------------|
| Item width mm | 1200 |
| Item depth mm | 650 |
| Item height mm | 600 |
| Package volume | 0.896 |
| Unit of volume | m3 |
| Package volume | 0.896 m3 |
| Package length | 140 |
| Package width | 80 |
| Package height | 80 |
| Package unit of dimension | cm |
| Package dimensions (LxWxH) | 140x80x80 cm |
| Net weight | 50.44 |
| Net weight | 50.44 kg |
| Gross weight | 50.44 |
| Package weight | 50.44 kg |
| Unit of weight | kg |
| Connection power kW | 0.06 |
| Fuse Size A | 10 |
| Connection voltage V | 220-240 |
| Number of phases | 1NPE |
| Frequency Hz | 50/60 |
| Startup current A | 0.5 |
| Protection rating (IP) | 43 |
| Type of electrical connection | Plug |

Neutral Tabletop Display

Metos Halo 1TR800 LED

Round-shaped singlesided neutral tabletop display made of plexi glass. LED-light

- easy to clean
- two glass shelves made of hardened glass



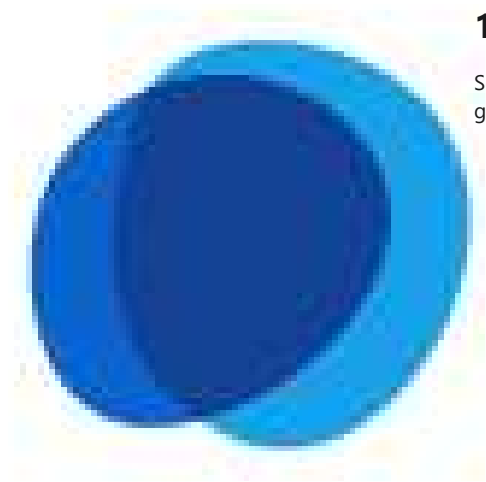
Neutral Tabletop Display Metos Halo 1TR800 LED

| | |
|-------------------------------|--------------|
| Item width mm | 800 |
| Item depth mm | 650 |
| Item height mm | 600 |
| Package volume | 0.64 |
| Unit of volume | m3 |
| Package volume | 0.64 m3 |
| Package length | 100 |
| Package width | 80 |
| Package height | 80 |
| Package unit of dimension | cm |
| Package dimensions (LxWxH) | 100x80x80 cm |
| Net weight | 37.9 |
| Net weight | 37.9 kg |
| Gross weight | 37.9 |
| Package weight | 37.9 kg |
| Unit of weight | kg |
| Connection power kW | 0.042 |
| Fuse Size A | 10 |
| Connection voltage V | 220-240 |
| Number of phases | 1NPE |
| Frequency Hz | 50/60 |
| Startup current A | 0.2 |
| Protection rating (IP) | 43 |
| Type of electrical connection | Plug |

CODE: MG4312618

Neutral Tabletop Display Metos Halo 1TS800 LED

Square-shaped singlesided neutral tabletop display made of plexi glass. LED-light



Full description

Technical specifications

Attachments

Square-shaped singlesided neutral tabletop display made of plexi glass. LED-light

- easy to clean
- two glass shelves made of hardened glass

| GENERAL | |
|-------------------------------|--|
| Description | Neutral Tabletop Display Metos Halo 1TS800 LED |
| DIMENSIONS AND CAPACITY | |
| Item width mm | 800 |
| Item depth mm | 640 |
| Item height mm | 600 |
| Package volume | 0.64 m3 |
| Package dimensions (LxWxH) | 92x80x80 cm |
| Net weight | 46.58 kg |
| Package weight | 46.58 kg |
| TECHNICAL INFORMATION | |
| Connection power kW | 0.042 |
| Fuse Size A | 10 |
| Connection voltage V | 220-240 |
| Number of phases | 1NPE |
| Frequency Hz | 50/60 |
| Startup current A | 0.2 |
| Protection rating (IP) | 43 |
| Type of electrical connection | Plug |

CODE: MG4312619

Neutral Tabletop Display Metos Halo 1TS1200 LED

Square-shaped singlesided neutral tabletop display made of plexi glass. LED-light



Full description

Technical specifications

Attachments

Square-shaped singlesided neutral tabletop display made of plexi glass. LED-light

- easy to clean
- two glass shelves made of hardened glass

GENERAL

| | |
|-------------|---|
| Description | Neutral Tabletop Display Metos Halo 1TS1200 LED |
|-------------|---|

DIMENSIONS AND CAPACITY

| | |
|----------------------------|--------------|
| Item width mm | 1200 |
| Item depth mm | 640 |
| Item height mm | 600 |
| Package volume | 0.896 m3 |
| Package dimensions (LxWxH) | 140x80x80 cm |
| Net weight | 62.56 kg |
| Package weight | 62.56 kg |

TECHNICAL INFORMATION

| | |
|-------------------------------|---------|
| Connection power kW | 0.06 |
| Fuse Size A | 10 |
| Connection voltage V | 220-240 |
| Number of phases | 1NPE |
| Frequency Hz | 50/60 |
| Startup current A | 0.2 |
| Protection rating (IP) | 43 |
| Type of electrical connection | Plug |

Tapas vitrine Metos Sushi VS4N

The refrigerated display cases for sushi are the perfect partner for maintaining the optimum temperature of your fresh products with the right humidity for an optimum conservation.

- capacity 4 x GN 1/3 - 40 mm
- automatic water collection tray
- maximum performance with minimum consumption
- folding glass for easy cleaning
- vitrified glass cover resistant to impact, rubbing, acids and common detergents
- sliding doors that are easy to remove and clean
- latest generation High Power Leds lighting
- flat top surface suitable for supporting plates
- invisible front hinge
- electronic adjustable thermostat "SAYL-BLUE" with constant digital reading
- AISI304 recessed tank, provided with drainage and without angles to facilitate cleaning
- top quality "Secop" hermetic, silent and ventilated turbo compressor
- hidden sensors to facilitate cleaning
- bar display cabinet with maximum visibility
- made of AISI304 stainless steel and tempered glass
- protected engine area
- keeps food between +2°C and +6°C in the "food zone"
- black finish
- compact over-the-counter models, without the need of installation, with adjustable legs.



Tapas vitrine Metos Sushi VS4N

| | |
|-------------------------------|--------------------|
| Product capacity | 4 x GN 1/3 - 40 mm |
| Item width mm | 1085 |
| Item depth mm | 395 |
| Item height mm | 245 |
| Package volume | 0.132 |
| Unit of volume | m3 |
| Package volume | 0.132 m3 |
| Package length | 110 |
| Package width | 40 |
| Package height | 30 |
| Package unit of dimension | cm |
| Package dimensions (LxWxH) | 110x40x30 cm |
| Net weight | 30 |
| Net weight | 30 kg |
| Gross weight | 32.5 |
| Package weight | 32.5 kg |
| Unit of weight | kg |
| Connection power kW | 0.345 |
| Fuse Size A | 6 |
| Connection voltage V | 230 |
| Number of phases | 1N |
| Frequency Hz | 50 |
| Type of electrical connection | Plug |
| Electrical conn. height mm | 25 |

Tapas vitrine Metos Sushi VS6N

The refrigerated display cases for sushi are the perfect partner for maintaining the optimum temperature of your fresh products with the right humidity for an optimum conservation.

- capacity 4 x GN 1/3 - 40 mm
- automatic water collection tray
- maximum performance with minimum consumption
- folding glass for easy cleaning
- vitrified glass cover resistant to impact, rubbing, acids and common detergents
- sliding doors that are easy to remove and clean
- latest generation High Power Leds lighting
- flat top surface suitable for supporting plates
- invisible front hinge
- electronic adjustable thermostat "SAYL-BLUE" with constant digital reading
- AISI304 recessed tank, provided with drainage and without angles to facilitate cleaning
- top quality "Secop" hermetic, silent and ventilated turbo compressor
- hidden sensors to facilitate cleaning
- bar display cabinet with maximum visibility
- made of AISI304 stainless steel and tempered glass
- protected engine area
- keeps food between +2°C and +6°C in the "food zone"
- black finish
- compact over-the-counter models, without the need of installation, with adjustable legs.



Tapas vitrine Metos Sushi VS6N

| | |
|-------------------------------|--------------------|
| Product capacity | 6 x GN 1/3 - 40 mm |
| Item width mm | 1438 |
| Item depth mm | 395 |
| Item height mm | 245 |
| Package volume | 0.18 |
| Unit of volume | m3 |
| Package volume | 0.18 m3 |
| Package length | 150 |
| Package width | 40 |
| Package height | 30 |
| Package unit of dimension | cm |
| Package dimensions (LxWxH) | 150x40x30 cm |
| Net weight | 35 |
| Net weight | 35 kg |
| Gross weight | 38 |
| Package weight | 38 kg |
| Unit of weight | kg |
| Connection power kW | 0.345 |
| Fuse Size A | 6 |
| Connection voltage V | 230 |
| Number of phases | 1N |
| Frequency Hz | 50 |
| Type of electrical connection | Plug |
| Electrical conn. height mm | 25 |

Tapas vitrine Metos Sushi VS8N

The refrigerated display cases for sushi are the perfect partner for maintaining the optimum temperature of your fresh products with the right humidity for an optimum conservation.

- capacity 8 x GN 1/3 - 40 mm
- automatic water collection tray
- maximum performance with minimum consumption
- folding glass for easy cleaning
- vitrified glass cover resistant to impact, rubbing, acids and common detergents
- sliding doors that are easy to remove and clean
- latest generation High Power Leds lighting
- flat top surface suitable for supporting plates
- invisible front hinge
- electronic adjustable thermostat "SAYL-BLUE" with constant digital reading
- AISI304 recessed tank, provided with drainage and without angles to facilitate cleaning
- top quality "Secop" hermetic, silent and ventilated turbo compressor
- hidden sensors to facilitate cleaning
- bar display cabinet with maximum visibility
- made of AISI304 stainless steel and tempered glass
- protected engine area
- keeps food between +2°C and +6°C in the "food zone"
- black finish
- compact over-the-counter models, without the need of installation, with adjustable legs.



Tapas vitrine Metos Sushi VS8N

| | |
|-------------------------------|--------------------|
| Product capacity | 8 x GN 1/3 - 40 mm |
| Item width mm | 1788 |
| Item depth mm | 395 |
| Item height mm | 245 |
| Package volume | 0.216 |
| Unit of volume | m3 |
| Package volume | 0.216 m3 |
| Package length | 180 |
| Package width | 40 |
| Package height | 30 |
| Package unit of dimension | cm |
| Package dimensions (LxWxH) | 180x40x30 cm |
| Net weight | 40 |
| Net weight | 40 kg |
| Gross weight | 44 |
| Package weight | 44 kg |
| Unit of weight | kg |
| Connection power kW | 0.345 |
| Fuse Size A | 6 |
| Connection voltage V | 230 |
| Number of phases | 1N |
| Frequency Hz | 50 |
| Type of electrical connection | Plug |
| Electrical conn. height mm | 25 |

Tapas vitrine Metos Sushi VS10N

The refrigerated display cases for sushi are the perfect partner for maintaining the optimum temperature of your fresh products with the right humidity for an optimum conservation.

- capacity 10 x GN 1/3 - 40 mm
- automatic water collection tray
- maximum performance with minimum consumption
- folding glass for easy cleaning
- vitrified glass cover resistant to impact, rubbing, acids and common detergents
- sliding doors that are easy to remove and clean
- latest generation High Power Leds lighting
- flat top surface suitable for supporting plates
- invisible front hinge
- electronic adjustable thermostat "SAYL-BLUE" with constant digital reading
- AISI304 recessed tank, provided with drainage and without angles to facilitate cleaning
- top quality "Secop" hermetic, silent and ventilated turbo compressor
- hidden sensors to facilitate cleaning
- bar display cabinet with maximum visibility
- made of AISI304 stainless steel and tempered glass
- protected engine area
- keeps food between +2°C and +6°C in the "food zone"
- black finish
- compact over-the-counter models, without the need of installation, with adjustable legs.



Tapas vitrine Metos Sushi VS10N

| | |
|-------------------------------|---------------------|
| Product capacity | 10 x GN 1/3 - 40 mm |
| Item width mm | 2140 |
| Item depth mm | 395 |
| Item height mm | 245 |
| Package volume | 0.264 |
| Unit of volume | m3 |
| Package volume | 0.264 m3 |
| Package length | 220 |
| Package width | 40 |
| Package height | 30 |
| Package unit of dimension | cm |
| Package dimensions (LxWxH) | 220x40x30 cm |
| Net weight | 44 |
| Net weight | 44 kg |
| Gross weight | 48 |
| Package weight | 48 kg |
| Unit of weight | kg |
| Connection power kW | 0.345 |
| Fuse Size A | 6 |
| Connection voltage V | 230 |
| Number of phases | 1N |
| Frequency Hz | 50 |
| Type of electrical connection | Plug |
| Electrical conn. height mm | 25 |

CODE: MG4209493

Refrigerated display Metos VPZ11-45CD, with glass and cooling unit on the right

With surrounding glass, the refrigerated GN-measured basin Metos VPZ11-45CD, which accommodate GN containers with a wide range of arrangements, help keep ingred...



Full description

Technical specifications

With surrounding glass, the refrigerated GN-measured basin Metos VPZ11-45CD, which accommodate GN containers with a wide range of arrangements, help keep ingredients for making pizzas, snacks and salads fresh, organising work in the best way possible. The static refrigeration on all 4 sides of the container ensures perfect preservation of all ingredients. The containers are tilted towards the user to make them easier to reach. The glass is shock resistance.

- Temperature range +2°... +10°C
- Cooling unit on the right
- Basin is stainless steel
- Environmentally-friendly R290 refrigerant
- PU, HCFC free insulation, thickness 50 mm, density 42 kg/m³
- Automatic defrost
- Can be set on the table and is removable
- Capacity 8xGN1/3
- Inner dimensions 1416 X 305 X 160 mm

Options:

- Without glass
- Cooling unit on the left

GENERAL

| | |
|-------------|---|
| Description | Refrigerated display Metos VPZ11-45CD,with glass and cooling unit on theright |
|-------------|---|

DIMENSIONS AND CAPACITY

| | |
|----------------------------|--------------|
| Product capacity | 8 x GN1/3 |
| Item width mm | 1800 |
| Item depth mm | 380 |
| Item height mm | 450 |
| Package volume | 0.492 m3 |
| Package dimensions (LxWxH) | 48x54x190 cm |
| Net weight | 55 kg |
| Package weight | 70 kg |

TECHNICAL INFORMATION

| | |
|-------------------------------|------|
| Connection power kW | 0.14 |
| Fuse Size A | 10 |
| Connection voltage V | 230 |
| Number of phases | 1N |
| Frequency Hz | 50 |
| Type of electrical connection | Plug |
| Cooling capacity W | 111 |
| Type of the refrigerant | R290 |

CODE: MG4209495

Refrigerated display Metos VPZ12-24AD, cooling unit on the right

The refrigerated GN-measured basin Metos VPZ12-24AD, which accommodate GN containers with a wide range of arrangements, help keep ingredients for making pizzas, ...



Full description

Technical specifications

The refrigerated GN-measured basin Metos VPZ12-24AD, which accommodate GN containers with a wide range of arrangements, help keep ingredients for making pizzas, snacks and salads fresh, organising work in the best way possible. The static refrigeration on all 4 sides of the container ensures perfect preservation of all ingredients. The containers are tilted towards the user to make them easier to reach.

- Temperature range +2°... +10°C
- Cooling unit on the right
- Basin is stainless steel
- Environmentally-friendly R290 refrigerant
- PU, HCFC free insulation, thickness 50 mm, density 42 kg/m³
- Automatic defrost
- Can be set on the table and is removable
- Capacity 6 x GN1/4

Options:

- With surrounding glass
- Cooling unit on the left

GENERAL

| | |
|-------------|--|
| Description | Refrigerated display Metos VPZ12-24AD, cooling unit on the right |
|-------------|--|

DIMENSIONS AND CAPACITY

| | |
|----------------------------|----------------------|
| Product capacity | 6 x GN1/4 |
| Item width mm | 1420 |
| Item depth mm | 320 |
| Item height mm | 240 |
| Package volume | 0.231 m ³ |
| Package dimensions (LxWxH) | 42x162x34 cm |
| Net weight | 32 kg |
| Package weight | 41 kg |

TECHNICAL INFORMATION

| | |
|-------------------------------|------|
| Connection power kW | 0.14 |
| Fuse Size A | 10 |
| Connection voltage V | 230 |
| Number of phases | 1N |
| Frequency Hz | 50 |
| Type of electrical connection | Plug |
| Cooling capacity W | 111 |
| Type of the refrigerant | R290 |

CODE: MG4209496

Refrigerated display Metos VPZ12-24BD, cooling unit on the right

The refrigerated GN-measured basin Metos VPZ12-24BD, which accommodate GN containers with a wide range of arrangements, help keep ingredients for making pizzas,...



Full description

Technical specifications

The refrigerated GN-measured basin Metos VPZ12-24BD, which accommodate GN containers with a wide range of arrangements, help keep ingredients for making pizzas, snacks and salads fresh, organising work in the best way possible. The static refrigeration on all 4 sides of the container, ensures perfect preservation of all ingredients. The containers are tilted towards the user to make them easier to reach.

- Temperature range +2°... +10°C
- PU, HCFC free insulation, thickness 50 mm, density 42 kg/m³
- Cooling unit on the right
- Basin is stainless steel
- Environmentally-friendly R290 refrigerant
- Automatic defrost and condensate evaporation
- With depth of 320mm
- GN-measured basin
- Can be set on the table and is removable

GENERAL

| | |
|---------------------------------------|--|
| Description | Refrigerated display Metos VPZ12-24BD, cooling unit on the right |
| <u>DIMENSIONS AND CAPACITY</u> | |
| Product capacity | 7 x GN1/4 |
| Item width mm | 1630 |
| Item depth mm | 320 |
| Item height mm | 240 |
| Package volume | 0.165 m ³ |
| Package dimensions (LxWxH) | 165x40x25 cm |
| Net weight | 35 kg |
| Package weight | 46 kg |

TECHNICAL INFORMATION

| | |
|-------------------------------|------|
| Connection power kW | 0.14 |
| Fuse Size A | 10 |
| Connection voltage V | 230 |
| Number of phases | 1N |
| Frequency Hz | 50 |
| Type of electrical connection | Plug |
| Cooling capacity W | 111 |
| Type of the refrigerant | R290 |

CODE: MG4209486

Refrigerated display Metos VPZ11-24BS, cooling unit on the left

The refrigerated GN-measured basin Metos VPZ11-24BS which accommodate GN containers with a wide range of arrangements, help keep ingredients for making pizzas, ...



Full description

Technical specifications

The refrigerated GN-measured basin Metos VPZ11-24BS which accommodate GN containers with a wide range of arrangements, help keep ingredients for making pizzas, snacks and salads fresh, organising work in the best way possible. The static refrigeration on all 4 sides of the container, ensures perfect preservation of all ingredients. The containers are tilted towards the user to make them easier to reach. Basin is without glass top and the cooling unit is on the left.

- Temperature range +2°... +10°C
- PU, HCFC free insulation, thickness 50 mm, density 42 kg/m3
- Cooling unit on the left
- Basin is stainless steel
- Inner dimensions 1216x305x160mm
- Environmentally-friendly R290 refrigerant
- Automatic defrost and condensate evaporation
- GN-measured basin
- Can be set on the table and is removable

GENERAL

| | |
|-------------|---|
| Description | Refrigerated display Metos VPZ11-24BS, cooling unit on the left |
|-------------|---|

DIMENSIONS AND CAPACITY

| | |
|----------------------------|--------------|
| Product capacity | 7 x GN1/3 |
| Item width mm | 1630 |
| Item depth mm | 380 |
| Item height mm | 240 |
| Package volume | 0.165 m3 |
| Package dimensions (LxWxH) | 165x40x25 cm |
| Net weight | 35 kg |
| Package weight | 40 kg |

TECHNICAL INFORMATION

| | |
|-------------------------------|------|
| Connection power kW | 0.14 |
| Fuse Size A | 10 |
| Connection voltage V | 230 |
| Number of phases | 1N |
| Frequency Hz | 50 |
| Type of electrical connection | Plug |
| Cooling capacity W | 111 |
| Type of the refrigerant | R290 |

Refrigerated display Metos VPZ11-24BS, cooling unit on the left

The refrigerated GN-measured basin Metos VPZ11-24BS which accommodate GN containers with a wide range of arrangements, help keep ingredients for making pizzas, ...

Full description

Technical specifications

~~Add to cart~~

The refrigerated GN-measured basin Metos VPZ11-24BS which accommodate GN containers with a wide range of arrangements, help keep ingredients for making pizzas, snacks and salads fresh, organising work in the best way possible. The static refrigeration on all 4 sides of the container, ensures perfect preservation of all ingredients. The containers are tilted towards the user to make them easier to reach. Basin is without glass top and the cooling unit is on the left.

- Temperature range +2°... +10°C
- PU, HCFC free insulation, thickness 50 mm, density 42 kg/m3
- Cooling unit on the left
- Basin is stainless steel
- Inner dimensions 1216x305x160mm
- Environmentally-friendly R290 refrigerant
- Automatic defrost and condensate evaporation
- GN-measured basin
- Can be set on the table and is removable

CODE: MG4209494

Refrigerated display Metos VPZ11-45ED, cooling unit on the right

With surrounding glass, the refrigerated GN-measured basin Metos VPZ11-45ED, which accommodate GN containers with a wide range of arrangements, help keep ingred...



Full description

Technical specifications

With surrounding glass, the refrigerated GN-measured basin Metos VPZ11-45ED, which accommodate GN containers with a wide range of arrangements, help keep ingredients for making pizzas, snacks and salads fresh, organising work in the best way possible. The static refrigeration on all 4 sides of the container ensures perfect preservation of all ingredients. The containers are tilted towards the user to make them easier to reach. The glass is shock resistance.

- Temperature range +2°... +10°C
- Cooling unit on the right
- Basin is stainless steel
- Environmentally-friendly R290 refrigerant
- PU, HCFC free insulation, thickness 50 mm, density 42 kg/m³
- Automatic defrost
- Can be set on the table and is removable
- Capacity 10 x GN1/3
- Inner dimensions 1766 X 305 X 160 mm

Options:

- Without glass
- Cooling unit on the left

GENERAL

| | |
|-------------|--|
| Description | Refrigerated display Metos VPZ11-45ED, cooling unit on the right |
|-------------|--|

DIMENSIONS AND CAPACITY

| | |
|----------------------------|--------------|
| Product capacity | 10 x GN1/3 |
| Item width mm | 2170 |
| Item depth mm | 380 |
| Item height mm | 450 |
| Package volume | 0.534 m3 |
| Package dimensions (LxWxH) | 48x54x206 cm |
| Net weight | 63 kg |
| Package weight | 79 kg |

TECHNICAL INFORMATION

| | |
|-------------------------------|------|
| Connection power kW | 0.14 |
| Fuse Size A | 10 |
| Connection voltage V | 230 |
| Number of phases | 1N |
| Frequency Hz | 50 |
| Type of electrical connection | Plug |
| Cooling capacity W | 111 |
| Type of the refrigerant | R290 |

CODE: MG4209497

Refrigerated display Metos VPZ12-24CD, cooling unit on the right

The refrigerated GN-measured basin Metos VPZ12-24CD, which accommodate GN containers with a wide range of arrangements, help keep ingredients for making pizzas,...



Full description

Technical specifications

The refrigerated GN-measured basin Metos VPZ12-24CD, which accommodate GN containers with a wide range of arrangements, help keep ingredients for making pizzas, snacks and salads fresh, organising work in the best way possible. The static refrigeration on all 4 sides of the container, ensures perfect preservation of all ingredients. The containers are tilted towards the user to make them easier to reach.

- Temperature range +2°... +10°C
- PU, HCFC free insulation, thickness 50 mm, density 42 kg/m³
- Cooling unit on the right
- Basin is stainless steel
- Environmentally-friendly R290 refrigerant
- Automatic defrost and condensate evaporation
- With depth of 320mm
- GN-measured basin
- Can be set on the table and is removable

GENERAL

| | |
|-------------|--|
| Description | Refrigerated display Metos VPZ12-24CD, cooling unit on the right |
|-------------|--|

DIMENSIONS AND CAPACITY

| | |
|----------------------------|--------------|
| Product capacity | 8 x GN1/4 |
| Item width mm | 1800 |
| Item depth mm | 320 |
| Item height mm | 240 |
| Package volume | 0.234 m3 |
| Package dimensions (LxWxH) | 195x40x30 cm |
| Net weight | 38 kg |
| Package weight | 52 kg |

TECHNICAL INFORMATION

| | |
|-------------------------------|------|
| Connection power kW | 0.14 |
| Fuse Size A | 10 |
| Connection voltage V | 230 |
| Number of phases | 1N |
| Frequency Hz | 50 |
| Type of electrical connection | Plug |
| Cooling capacity W | 111 |
| Type of the refrigerant | R290 |

CODE: MG4209487

Refrigerated display Metos VPZ11-24BS cooling unit on the right

The refrigerated GN-measured basin Metos VPZ11-24BS, which accommodate GN containers with a wide range of arrangements, help keep ingredients for making pizzas,...



Full description

Technical specifications

The refrigerated GN-measured basin Metos VPZ11-24BS, which accommodate GN containers with a wide range of arrangements, help keep ingredients for making pizzas, snacks and salads fresh, organising work in the best way possible. The static refrigeration on all 4 sides of the container, ensures perfect preservation of all ingredients. The containers are tilted towards the user to make them easier to reach. Basin is without glass top and cooling unit is on the right.

- Temperature range +2°... +10°C
- PU, HCFC free insulation, thickness 50 mm, density 42 kg/m3
- Cooling unit on the right
- Basin is stainless steel
- Inner dimensions 1216x305x160mm
- Environmentally-friendly R290 refrigerant
- Automatic defrost and condensate evaporation
- GN-measured basin
- Can be set on the table and is removable

GENERAL

| | |
|-------------|---|
| Description | Refrigerated display Metos VPZ11-24BS cooling unit on the right |
|-------------|---|

DIMENSIONS AND CAPACITY

| | |
|----------------------------|--------------|
| Product capacity | 7 x GN1/3 |
| Item width mm | 1630 |
| Item depth mm | 380 |
| Item height mm | 240 |
| Package volume | 0.165 m3 |
| Package dimensions (LxWxH) | 165x40x25 cm |
| Net weight | 35 kg |
| Package weight | 46 kg |

TECHNICAL INFORMATION

| | |
|-------------------------------|------|
| Connection power kW | 0.14 |
| Fuse Size A | 10 |
| Connection voltage V | 230 |
| Number of phases | 1N |
| Frequency Hz | 50 |
| Type of electrical connection | Plug |
| Cooling capacity W | 111 |
| Type of the refrigerant | R290 |

CODE: MG4209489

Refrigerated display Metos VPZ11-24AD cooling unit on the right

The refrigerated GN-measured basin Metos VPZ11-24AD, which accommodate GN containers with a wide range of arrangements, help keep ingredients for making pizzas,...



Full description

Technical specifications

The refrigerated GN-measured basin Metos VPZ11-24AD, which accommodate GN containers with a wide range of arrangements, help keep ingredients for making pizzas, snacks and salads fresh, organising work in the best way possible. The static refrigeration on all 4 sides of the container ensures perfect preservation of all ingredients. The containers are tilted towards the user to make them easier to reach.

- Temperature range +2°... +10°C
- Cooling unit on the right
- Basin is stainless steel
- Environmentally-friendly R290 refrigerant
- PU, HCFC free insulation, thickness 50 mm, density 42 kg/m3
- Automatic defrost
- Can be set on the table and is removable
- Capacity 6xGN1/3

Options:

- With glass
- Cooling unit on the left

CODE: MG4209489

Refrigerated display Metos VPZ11-24AD cooling unit on the right

The refrigerated GN-measured basin Metos VPZ11-24AD, which accommodate GN containers with a wide range of arrangements, help keep ingredients for making pizzas,...



Full description

Technical specifications

GENERAL

| | |
|-------------|---------------------------------------|
| Description | Refrigerated display Metos VPZ11-24AD |
|-------------|---------------------------------------|

DIMENSIONS AND CAPACITY

| | |
|----------------------------|--------------|
| Product capacity | 6x GN1/3-150 |
| Item width mm | 1420 |
| Item depth mm | 380 |
| Item height mm | 240 |
| Package volume | 0.27 m3 |
| Package dimensions (LxWxH) | 150x45x40 cm |
| Net weight | 32 kg |
| Package weight | 41 kg |

TECHNICAL INFORMATION

| | |
|-------------------------------|------|
| Connection power kW | 0.14 |
| Fuse Size A | 10 |
| Connection voltage V | 230 |
| Number of phases | 1N |
| Frequency Hz | 50 |
| Type of electrical connection | Plug |
| Cooling capacity W | 111 |
| Type of the refrigerant | R290 |

CODE: MG4209489

Refrigerated display Metos VPZ11-24AD cooling unit on the right

The refrigerated GN-measured basin Metos VPZ11-24AD, which accommodate GN containers with a wide range of arrangements, help keep ingredients for making pizzas,...



Full description

Technical specifications

GENERAL

| | |
|-------------|---------------------------------------|
| Description | Refrigerated display Metos VPZ11-24AD |
|-------------|---------------------------------------|

DIMENSIONS AND CAPACITY

| | |
|----------------------------|--------------|
| Product capacity | 6x GN1/3-150 |
| Item width mm | 1420 |
| Item depth mm | 380 |
| Item height mm | 240 |
| Package volume | 0.27 m3 |
| Package dimensions (LxWxH) | 150x45x40 cm |
| Net weight | 32 kg |
| Package weight | 41 kg |

TECHNICAL INFORMATION

| | |
|-------------------------------|------|
| Connection power kW | 0.14 |
| Fuse Size A | 10 |
| Connection voltage V | 230 |
| Number of phases | 1N |
| Frequency Hz | 50 |
| Type of electrical connection | Plug |
| Cooling capacity W | 111 |
| Type of the refrigerant | R290 |

CODE: MG4209488

Refrigerated display Metos VPZ11-24AS cooling unit on the left

The refrigerated GN-measured basin Metos VPZ11-24AS, which accommodate GN containers with a wide range of arrangements, help keep ingredients for making pizzas,...



Full description

Technical specifications

The refrigerated GN-measured basin Metos VPZ11-24AS, which accommodate GN containers with a wide range of arrangements, help keep ingredients for making pizzas, snacks and salads fresh, organising work in the best way possible. The static refrigeration on all 4 sides of the container ensures perfect preservation of all ingredients. The containers are tilted towards the user to make them easier to reach.

- Temperature range +2°... +10°C
- Cooling unit on the left
- Basin is stainless steel
- Environmentally-friendly R290 refrigerant
- PU, HCFC free insulation, thickness 50 mm, density 42 kg/m3
- Automatic defrost
- Can be set on the table and is removable
- Capacity 6xGN1/3

Options:

- With glass
- Cooling unit on the right

GENERAL

| | |
|-------------|--|
| Description | Refrigerated display Metos VPZ11-24AS cooling unit on the left |
|-------------|--|

DIMENSIONS AND CAPACITY

| | |
|----------------------------|--------------|
| Product capacity | 6x GN1/3-150 |
| Item width mm | 1420 |
| Item depth mm | 380 |
| Item height mm | 240 |
| Package volume | 0.365 m3 |
| Package dimensions (LxWxH) | 150x45x54 cm |
| Net weight | 34 kg |
| Package weight | 41 kg |

TECHNICAL INFORMATION

| | |
|-------------------------------|------|
| Connection power kW | 0.14 |
| Fuse Size A | 10 |
| Connection voltage V | 230 |
| Number of phases | 1N |
| Frequency Hz | 50 |
| Type of electrical connection | Plug |
| Cooling capacity W | 111 |
| Type of the refrigerant | R290 |

Refrigerated display Metos VK38-160 with R600A

The cold basin Metos VK38-160 is convenient and lightweight, small in space and easily movable. The basin can be placed on the table or installed in the working space by means of the support legs or shelf above the table level, providing the raw materials easily at hand..

The capacity of the cold basin VK38-160 is for seven GN 1/3 dishes. The glass part on the bottom of the basin protects the raw materials from splashing. The device has a clear digital display and its temperature is adjustable between +2°C...+10°C . The structure of the basin is made of stainless steel, the glass part is of impact-resistant glass.



- capacity 7xGN1/3
- temperature adjustment +2°C...+10°C.
- static cooling
- manual thawing
- electronic thermostat
- device stainless steel SS304, glass part of impact-resistant glass.
- 4 adjustable legs

ACCESSORIES (ordered separately)

- GN dishes
- basin lid is of stainless steel

Refrigerated display Metos VK38-160 with R600A

| | |
|----------------------------|----------------------|
| Product capacity | 7xGN1/3 |
| Item width mm | 1600 |
| Item depth mm | 395 |
| Item height mm | 225 |
| Package volume | 0.229 |
| Unit of volume | m ³ |
| Package volume | 0.229 m ³ |
| Package length | 168 |
| Package width | 44 |
| Package height | 31 |
| Package unit of dimension | cm |
| Package dimensions (LxWxH) | 168x44x31 cm |
| Net weight | 32 |
| Net weight | 32 kg |
| Gross weight | 34 |
| Package weight | 34 kg |
| Unit of weight | kg |
| Connection power kW | 0.34 |
| Fuse Size A | 13 |
| Connection voltage V | 220-240 |
| Number of phases | 1NPE |
| Frequency Hz | 50 |
| Protection rating (IP) | 20 |
| Drain diameter | 24 |
| Drain conn. height mm | 228 |
| Floor drain needed | Yes |
| Type of the refrigerant | R600A |
| Quantity of refrigerant g | 40 |
| Sound level dB | 47 |

Vertical freezer display

Metos Luxor KG8V white

Metos Luxor Classic Slim KG8V is an elegant, innovative and adaptable vertical slim freezer display that creates an attractive and exclusive environment for the products sold. In addition to the walls and shelves that are made of hardened glass, the thin rack shelves that are powered with static cooling allow for an unobstructed view of the products inside the display.

At only 60 cm wide, the Metos Luxor Classic Slim KG8V vertical freezer display is intended for storing of frozen confectionery products and ice-cream. Equipped with five (650x460 mm) rack shelves, one glass shelf, shade adjustable LED-lights and a right hinged door, the vertical cold display creates a clear and light frame for products. The display's cold area can be set to between -25°C...-15°C. The display has a static cooler, which distributes the air evenly across the whole area.

The display's frame is covered with white (RAL 9010) silk printing. The lower part of the frame masterfully hides the wheels, enabling the easy movability of the display. The display has an automatic melting and water evaporating system.

- five cold rack shelves (650x460 mm) and a glass shelf (650x420 mm)
- cold area -25°...-15°C
- right hinged door
- LED-lights at the corners, shade adjustable between 3000-6000K
- electronic control board with a digital screen
- HACCP alarm system
- manual melting
- heating elements that prevent the compression of moisture
- white silk printed frame, hardened glass walls, stainless steel shelf support system
- the display



works in an environment where the max. temperature is +30°C and the relative humidity is 55%

Delivery includes:

- five rack shelves and a glass shelf works in an environment where the max. temperature is +30°C and the relative humidity is 55%

Delivery includes:

- five rack shelves and a glass shelf

Vertical freezer display Metos Luxor KG8V white

| | |
|-------------------------------|--------------|
| Product capacity | 490 litres |
| Item width mm | 805 |
| Item depth mm | 645 |
| Item height mm | 1840 |
| Package volume | 1.366 |
| Unit of volume | m3 |
| Package volume | 1.366 m3 |
| Package length | 89 |
| Package width | 76 |
| Package height | 202 |
| Package unit of dimension | cm |
| Package dimensions (LxWxH) | 89x76x202 cm |
| Net weight | 230 |
| Net weight | 230 kg |
| Gross weight | 253 |
| Package weight | 253 kg |
| Unit of weight | kg |
| Connection power kW | 0.93 |
| Connection voltage V | 230 |
| Number of phases | 1NPE |
| Frequency Hz | 50 |
| Type of electrical connection | Plug |
| Electrical conn. height mm | 50 |
| Type of the refrigerant | R290 |
| Remarks (refrigeration) | -25°C/-15°C |

Cold display Metos Luxor Double KP12Q2

Metos Luxor Double KP12Q2 is an elegant, innovative and adaptable vertical slim display that creates an attractive and exclusive environment for the products sold. In addition to the walls and shelves that are made of hardened glass, the barely noticeable shelf support system allows for an unobstructed view of the products inside the display.

The Metos Luxor Double KP12Q2 vertical display is equipped with four (1070x410 mm) glass shelves, LED-lights and flap glass doors, creating a clear and light frame for products. The display's cold area can be set to between +2°C...+10°C. The display has a cooling system with a fan, which distributes the air evenly across the whole area.

The lower part of the display is made of stainless steel with an anti-fingerprint serigraphy surface. The lower part of the frame masterfully hides the wheels, enabling the easy movability of the display. The two, easily openable, pneumatic flap doors open to 140°. The display has an automatic melting and water evaporating system.

- four glass shelves (1070x410 mm), weight limit 20 kg/per shelf
- cold area +2°...+10°C
- two easily openable, pneumatic flap doors
- LED-lights going lengthwise on the top part of the door
- black, electronic control board with a digital screen made of glass
- HACCP alarm system
- automatic melting and water evaporating system
- stainless steel lower frame, grey silk printed display, hardened glass walls and shelves, stainless steel/PVC shelf support system
- the display works in an environment where the max.



temperature is +30°C and the relative humidity is 55%

Delivery includes:

- four glass shelves with support system temperature is +30°C and the relative humidity is 55%

Delivery includes:

- four glass shelves with support system

Cold display Metos Luxor Double KP12Q2

| | |
|-------------------------------|-----------------|
| Product capacity | 536 litres |
| Item width mm | 1200 |
| Item depth mm | 660 |
| Item height mm | 1430 |
| Package volume | 1.651 |
| Unit of volume | m3 |
| Package volume | 1.651 m3 |
| Package length | 130 |
| Package width | 76.5 |
| Package height | 166 |
| Package unit of dimension | cm |
| Package dimensions (LxWxH) | 130x76.5x166 cm |
| Net weight | 260 |
| Net weight | 260 kg |
| Gross weight | 292 |
| Package weight | 292 kg |
| Unit of weight | kg |
| Connection power kW | 1 |
| Connection voltage V | 230 |
| Number of phases | 1N |
| Frequency Hz | 50 |
| Type of electrical connection | Plug |
| Electrical conn. height mm | 50 |
| Cooling capacity W | 1120 |
| Type of the refrigerant | R452A |

Vertical cold display Metos Luxor Classic Slim KP6G

Metos Luxor Classic Slim KP6G is an elegant, innovative and adaptable vertical slim display that creates an attractive and exclusive environment for the products sold. In addition to the walls and shelves that are made of hardened glass, the barely noticeable shelf support system allows for an unobstructed view of the products inside the display.

At only 60 cm wide, the Metos Luxor Classic Slim KP6G vertical display is intended for storing confectionery products and drinks. Equipped with five (490x470 mm) glass shelves, LED-lights and a right hinged door, the vertical cold display creates a clear and light frame for products. The display's cold area can be set to between +2°C...+10°C. The display has a cooling system with a fan, which distributes the air evenly across the whole area.

The lower part of the display is made of stainless steel with an anti-fingerprint serigraphy surface. The lower part of the frame masterfully hides the wheels, enabling the easy movability of the display. The display has an automatic melting and water evaporating system.

- five glass shelves (490x470 mm), weight limit 12 kg/per shelf
- cold area +2°...+10°C
- right hinged door
- LED-lights at the front of the display, behind the door
- HACCP alarm system
- automatic melting and water evaporating system
- stainless steel lower frame, grey silk printed display frame, hardened glass walls and shelves, stainless steel shelf support system
- the display works in an environment where the max. temperature is +30°C and the relative humidity



is 55%

Delivery includes:

- five glass shelves with support system

Optional accessories (order separately):

- extra glass shelf with support system
- bottle rack shelf for 14 bottles is 55%

Delivery includes:

- five glass shelves with support system

Optional accessories (order separately):

- extra glass shelf with support system
- bottle rack shelf for 14 bottles

Vertical cold display Metos Luxor Classic Slim KP6G

| | |
|-------------------------------|--------------|
| Product capacity | 324 litres |
| Item width mm | 600 |
| Item depth mm | 645 |
| Item height mm | 1840 |
| Package volume | 1.136 |
| Unit of volume | m3 |
| Package volume | 1.136 m3 |
| Package length | 74 |
| Package width | 76 |
| Package height | 202 |
| Package unit of dimension | cm |
| Package dimensions (LxWxH) | 74x76x202 cm |
| Net weight | 170 |
| Net weight | 170 kg |
| Gross weight | 191 |
| Package weight | 191 kg |
| Unit of weight | kg |
| Connection power kW | 0.36 |
| Connection voltage V | 230 |
| Number of phases | 1NPE |
| Frequency Hz | 50 |
| Type of electrical connection | Plug |
| Electrical conn. height mm | 50 |
| Type of the refrigerant | R290 |
| Remarks (refrigeration) | +2°C/+10°C |

Vertical freezer display

Metos Luxor KG8A black

Metos Luxor Classic Slim KG8A is an elegant, innovative and adaptable vertical slim freezer display that creates an attractive and exclusive environment for the products sold. In addition to the walls and shelves that are made of hardened glass, the thin rack shelves that are powered with static cooling allow for an unobstructed view of the products inside the display.

At only 60 cm wide, the Metos Luxor Classic Slim KG8A vertical freezer display is intended for storing of frozen confectionery products and ice-cream. Equipped with five (650x460 mm) rack shelves, one glass shelf, shade adjustable LED-lights and a right hinged door, the vertical cold display creates a clear and light frame for products. The display's cold area can be set to between -25°C...-15°C. The display has a static cooler, which distributes the air evenly across the whole area.

The display's frame is covered with black (RAL 9005) silk printing. The lower part of the frame masterfully hides the wheels, enabling the easy movability of the display. The display has an automatic melting and water evaporating system.

- five cold rack shelves (650x460 mm) and a glass shelf (650x420 mm)
- cold area -25°...-15°C
- right hinged door
- LED-lights at the corners, shade adjustable between 3000-6000 K
- electronic control board with a digital screen
- HACCP alarm system
- manual melting
- heating elements that prevent the compression of moisture
- black silk printed frame, hardened glass walls, stainless steel shelf support system
- the display



works in an environment where the max. temperature is +30°C and the relative humidity is 55%

Delivery includes:

- five rack shelves and a glass shelf works in an environment where the max. temperature is +30°C and the relative humidity is 55%

Delivery includes:

- five rack shelves and a glass shelf

Vertical freezer display Metos Luxor KG8A black

| | |
|-------------------------------|--------------|
| Product capacity | 490 litres |
| Item width mm | 805 |
| Item depth mm | 645 |
| Item height mm | 1840 |
| Package volume | 1.366 |
| Unit of volume | m3 |
| Package volume | 1.366 m3 |
| Package length | 89 |
| Package width | 76 |
| Package height | 202 |
| Package unit of dimension | cm |
| Package dimensions (LxWxH) | 89x76x202 cm |
| Net weight | 230 |
| Net weight | 230 kg |
| Gross weight | 253 |
| Package weight | 253 kg |
| Unit of weight | kg |
| Connection power kW | 0.93 |
| Connection voltage V | 230 |
| Number of phases | 1NPE |
| Frequency Hz | 50 |
| Type of electrical connection | Plug |
| Electrical conn. height mm | 50 |
| Type of the refrigerant | R290 |
| Remarks (refrigeration) | -25°C/-15°C |

Vertical freezer display

Metos Luxor Classic Slim KG6G

Metos Luxor Classic Slim KG6G is an elegant, innovative and adaptable vertical slim freezer display that creates an attractive and exclusive environment for the products sold. In addition to the walls and shelves that are made of hardened glass, the thin rack shelves that are powered with static cooling allow for an unobstructed view of the products inside the display.

At only 60 cm wide, the Metos Luxor Classic Slim KG6G vertical freezer display is intended for storing of frozen confectionery products and ice-cream. Equipped with five (450x460 mm) rack shelves, one glass shelf, LED-lights and a right hinged door, the vertical cold display creates a clear and light frame for products. The display's cold area can be set to between -25°C...-15°C. The display has a static cooler, which distributes the air evenly across the whole area.

The lower part of the display is made of stainless steel with an anti-fingerprint serigraphy surface. The lower part of the frame masterfully hides the wheels, enabling the easy movability of the display.

- five cold rack shelves (450x460 mm) and a glass shelf (450x420 mm)
- cold area -25°...-15°C
- right hinged door
- LED-lights at the front of the display, behind the door
- electronic control board with a digital screen
- HACCP alarm system
- manual melting
- heating elements that prevent the compression of moisture
- stainless steel lower frame, grey silk printed display frame, hardened glass walls, stainless steel shelf support system
- the display works in an environment



where the max. temperature is +30°C and the relative humidity is 55%

Delivery includes:

- five rack shelves and a glass shelf where the max. temperature is +30°C and the relative humidity is 55%

Delivery includes:

- five rack shelves and a glass shelf

Vertical freezer display Metos Luxor Classic Slim KG6G

| | |
|-------------------------------|--------------|
| Product capacity | 324 litres |
| Item width mm | 600 |
| Item depth mm | 645 |
| Item height mm | 1840 |
| Package volume | 1.136 |
| Unit of volume | m3 |
| Package volume | 1.136 m3 |
| Package length | 74 |
| Package width | 76 |
| Package height | 202 |
| Package unit of dimension | cm |
| Package dimensions (LxWxH) | 74x76x202 cm |
| Net weight | 200 |
| Net weight | 200 kg |
| Gross weight | 222 |
| Package weight | 222 kg |
| Unit of weight | kg |
| Connection power kW | 0.85 |
| Connection voltage V | 230 |
| Number of phases | 1NPE |
| Frequency Hz | 50 |
| Type of electrical connection | Plug |
| Electrical conn. height mm | 50 |
| Type of the refrigerant | R290 |
| Remarks (refrigeration) | -25°C/-15°C |

Vertical cold display Metos Luxor Classic KP8G

Metos Luxor Classic KP8G is an elegant, innovative and adaptable vertical slim display that creates an attractive and exclusive environment for the products sold. In addition to the walls and shelves that are made of hardened glass, the barely noticeable shelf support system allows for an unobstructed view of the products inside the display.

The Metos Luxor Classic KP8G vertical display is intended for storing confectionery products and drinks. Equipped with five (700x470 mm) glass shelves, LED-lights and a right hinged door, the vertical cold display creates a clear and light frame for products. The display's cold area can be set to between +2°C...+10°C. The display has a cooling system with a fan, which distributes the air evenly across the whole area.

The lower part of the display is made of stainless steel with an anti-fingerprint serigraphy surface. The lower part of the frame masterfully hides the wheels, enabling the easy movability of the display. The display has an automatic melting and water evaporating system.

- five glass shelves (700x470 mm), weight limit 12 kg/per shelf
- cold area +2°...+10°C
- right hinged door
- LED-lights at the front of the display, behind the door
- electronic control board with a digital screen
- HACCP alarm system
- automatic melting and water evaporating system
- stainless steel lower frame, , grey silk printed display, hardened glass walls and shelves, stainless steel shelf support system
- the display works in an environment where the max. temperature is +30°C and



the relative humidity is 55%

Delivery includes:

- five glass shelves with support system

Optional accessories (order separately):

- extra glass shelf with support system
- bottle rack shelf for 14 bottles the relative humidity is 55%

Delivery includes:

- five glass shelves with support system

Optional accessories (order separately):

- extra glass shelf with support system
- bottle rack shelf for 14 bottles

Vertical cold display Metos Luxor Classic KP8G

| | |
|-------------------------------|---------------------|
| Product capacity | 5 shelves 700x470mm |
| Item width mm | 805 |
| Item depth mm | 645 |
| Item height mm | 1840 |
| Package volume | 1.366 |
| Unit of volume | m3 |
| Package volume | 1.366 m3 |
| Package length | 89 |
| Package width | 76 |
| Package height | 202 |
| Package unit of dimension | cm |
| Package dimensions (LxWxH) | 89x76x202 cm |
| Net weight | 211 |
| Net weight | 211 kg |
| Gross weight | 236 |
| Package weight | 236 kg |
| Unit of weight | kg |
| Connection power kW | 0.52 |
| Connection voltage V | 230 |
| Number of phases | 1N |
| Frequency Hz | 50 |
| Type of electrical connection | Plug |
| Electrical conn. height mm | 50 |
| Type of the refrigerant | R290 |
| Remarks (refrigeration) | +2°C/+10°C |

Vertical freezer display

Metos Luxor Classic KG8G

Metos Luxor Classic Slim KG8G is an elegant, innovative and adaptable vertical slim freezer display that creates an attractive and exclusive environment for the products sold. In addition to the walls and shelves that are made of hardened glass, the thin rack shelves that are powered with static cooling allow for an unobstructed view of the products inside the display.

At only 60 cm wide, the Metos Luxor Classic Slim KG8G vertical freezer display is intended for storing of frozen confectionery products and ice-cream. Equipped with five (650x460 mm) rack shelves, one glass shelf, LED-lights and a right hinged door, the vertical cold display creates a clear and light frame for products. The display's cold area can be set to between -25°C...-15°C. The display has a static cooler, which distributes the air evenly across the whole area.

The lower part of the display is made of stainless steel with an anti-fingerprint serigraphy surface. The lower part of the frame masterfully hides the wheels, enabling the easy movability of the display.

- five cold rack shelves (650x460 mm) and a glass shelf (650x420 mm)
- cold area -25°...-15°C
- right hinged door
- LED-lights at the front of the display, behind the door
- electronic control board with a digital screen
- HACCP alarm system
- manual melting
- heating elements that prevent the compression of moisture
- stainless steel lower frame, grey silk printed display frame, hardened glass walls, stainless steel shelf support system
- the display works in an environment



where the max. temperature is +30°C and the relative humidity is 55%

Delivery includes:

- five rack shelves and a glass shelf where the max. temperature is +30°C and the relative humidity is 55%

Delivery includes:

- five rack shelves and a glass shelf

Vertical freezer display Metos Luxor Classic KG8G

| | |
|-------------------------------|--------------|
| Product capacity | 490 litres |
| Item width mm | 805 |
| Item depth mm | 645 |
| Item height mm | 1840 |
| Package volume | 1.366 |
| Unit of volume | m3 |
| Package volume | 1.366 m3 |
| Package length | 89 |
| Package width | 76 |
| Package height | 202 |
| Package unit of dimension | cm |
| Package dimensions (LxWxH) | 89x76x202 cm |
| Net weight | 220 |
| Net weight | 220 kg |
| Gross weight | 242 |
| Package weight | 242 kg |
| Unit of weight | kg |
| Connection power kW | 0.9 |
| Connection voltage V | 230 |
| Number of phases | 1NPE |
| Frequency Hz | 50 |
| Type of electrical connection | Plug |
| Electrical conn. height mm | 50 |
| Type of the refrigerant | R290 |
| Remarks (refrigeration) | -25°C/-15°C |

Cold display Metos Luxor Double KP12Q

Metos Luxor Double KP12Q is an elegant, innovative and adaptable vertical slim display that creates an attractive and exclusive environment for the products sold. In addition to the walls and shelves that are made of hardened glass, the barely noticeable shelf support system allows for an unobstructed view of the products inside the display.

The Metos Luxor Double KP12Q vertical display is equipped with six (1070x410 mm) glass shelves, LED-lights and flap glass doors, creating a clear and light frame for products. The display's cold area can be set to between +2°C...+10°C. The display has a cooling system with a fan, which distributes the air evenly across the whole area.

The lower part of the display is made of stainless steel with an anti-fingerprint serigraphy surface. The lower part of the frame masterfully hides the wheels, enabling the easy movability of the display. The three, easily openable, pneumatic flap doors open to 140°. The display has an automatic melting and water evaporating system.

- six glass shelves (1070x410 mm), weight limit 20 kg/per shelf
- cold area +2°...+10°C
- three easily openable, pneumatic flap doors
- LED-lights going lengthwise on the top part of the door
- black, electronic control board with a digital screen made of glass
- HACCP alarm system
- automatic melting and water evaporating system
- stainless steel lower frame, grey silk printed display, hardened glass walls and shelves, stainless steel/PVC shelf support system
- the display works in an environment where the max.



temperature is +30°C and the relative humidity is 55%

Delivery includes:

- six glass shelves with support system temperature is +30°C and the relative humidity is 55%

Delivery includes:

- six glass shelves with support system

Cold display Metos Luxor Double KP12Q

| | |
|-------------------------------|-----------------|
| Product capacity | 811 litres |
| Item width mm | 1200 |
| Item depth mm | 660 |
| Item height mm | 1880 |
| Package volume | 2.039 |
| Unit of volume | m3 |
| Package volume | 2.039 m3 |
| Package length | 130 |
| Package width | 76.5 |
| Package height | 205 |
| Package unit of dimension | cm |
| Package dimensions (LxWxH) | 130x76.5x205 cm |
| Net weight | 320 |
| Net weight | 320 kg |
| Gross weight | 355 |
| Package weight | 355 kg |
| Unit of weight | kg |
| Connection power kW | 0.98 |
| Connection voltage V | 230 |
| Number of phases | 1NPE |
| Frequency Hz | 50 |
| Type of electrical connection | Plug |
| Electrical conn. height mm | 50 |
| Cooling capacity W | 1120 |
| Type of the refrigerant | R452A |

Vertical freezer display

Metos Luxor Slim KG6A

black

Metos Luxor Classic Slim KG6A is an elegant, innovative and adaptable vertical slim freezer display that creates an attractive and exclusive environment for the products sold. In addition to the walls and shelves that are made of hardened glass, the thin rack shelves that are powered with static cooling allow for an unobstructed view of the products inside the display.

At only 60 cm wide, the Metos Luxor Classic Slim KG6A vertical freezer display is intended for storing of frozen confectionery products and ice-cream. Equipped with five (450x460 mm) rack shelves, one glass shelf, shade adjustable LED-lights and a right hinged door, the vertical cold display creates a clear and light frame for products. The display's cold area can be set to between -25°C...-15°C. The display has a static cooler, which distributes the air evenly across the whole area.

The display's frame is covered with white (RAL 9010) silk printing. The lower part of the frame masterfully hides the wheels, enabling the easy movability of the display. The display has an automatic melting and water evaporating system.

- five cold rack shelves (450x460 mm) and a glass shelf (450x420 mm)
- cold area -25°...-15°C
- right hinged door
- LED-lights at the corners, shade adjustable between 3000-6000K electronic control board with a digital screen
- HACCP alarm system
- manual melting
- heating elements that prevent the compression of moisture
- black silk printed frame, hardened glass walls, stainless steel shelf support system
- the display works in



an environment where the max. temperature is +30°C and the relative humidity is 55%

Delivery includes:

- five rack shelves and a glass shelf an environment where the max. temperature is +30°C and the relative humidity is 55%

Delivery includes:

- five rack shelves and a glass shelf

Vertical freezer display Metos Luxor Slim KG6A black

| | |
|-------------------------------|--------------|
| Product capacity | 324 litres |
| Item width mm | 600 |
| Item depth mm | 645 |
| Item height mm | 1840 |
| Package volume | 1.136 |
| Unit of volume | m3 |
| Package volume | 1.136 m3 |
| Package length | 74 |
| Package width | 76 |
| Package height | 202 |
| Package unit of dimension | cm |
| Package dimensions (LxWxH) | 74x76x202 cm |
| Net weight | 200 |
| Net weight | 200 kg |
| Gross weight | 224 |
| Package weight | 224 kg |
| Unit of weight | kg |
| Connection power kW | 0.88 |
| Connection voltage V | 230 |
| Number of phases | 1NPE |
| Frequency Hz | 50 |
| Type of electrical connection | Plug |
| Electrical conn. height mm | 50 |
| Type of the refrigerant | R290 |
| Remarks (refrigeration) | -25°C/-15°C |

Vertical cold display Metos Luxor Slim KP6V white

Metos Luxor Classic Slim KP6V is an elegant, innovative and adaptable vertical slim display that creates an attractive and exclusive environment for the products sold. In addition to the walls and shelves that are made of hardened glass, the barely noticeable shelf support system allows for an unobstructed view of the products inside the display.

At only 60 cm wide, the Metos Luxor Classic Slim KP6V vertical display is intended for storing confectionery products and drinks. Equipped with five (490x470 mm) glass shelves, shade adjustable LED-lights and a right hinged door, the vertical cold display creates a clear and light frame for products. The display's cold area can be set to between +2°C...+10°C. The display has a cooling system with a fan, which distributes the air evenly across the whole area.

The display's frame is covered with white (RAL 9010) silk printing. The lower part of the frame masterfully hides the wheels, enabling the easy movability of the display. The display has an automatic melting and water evaporating system.

- five glass shelves (490x470 mm), weight limit 12 kg/per shelf
- cold area +2°...+10°C
- right hinged door
- LED-lights at the corners, shade adjustable between 3000-6000K
- electronic control board with a digital screen
- HACCP alarm system
- automatic melting and water evaporating system
- white silk printed frame, hardened glass walls and shelves, stainless steel shelf support system
- the display works in an environment where the max. temperature is +30°C and the relative



humidity is 55%

Delivery includes:

- five glass shelves with support system

Optional accessories (order separately):

- extra glass shelf with support system
- bottle rack shelf for 14 bottles humidity is 55%

Delivery includes:

- five glass shelves with support system

Optional accessories (order separately):

- extra glass shelf with support system
- bottle rack shelf for 14 bottles

Vertical cold display Metos Luxor Slim KP6V white

| | |
|-------------------------------|--------------|
| Product capacity | 324 litres |
| Item width mm | 600 |
| Item depth mm | 645 |
| Item height mm | 1840 |
| Package volume | 1.136 |
| Unit of volume | m3 |
| Package volume | 1.136 m3 |
| Package length | 74 |
| Package width | 76 |
| Package height | 202 |
| Package unit of dimension | cm |
| Package dimensions (LxWxH) | 74x76x202 cm |
| Net weight | 175 |
| Net weight | 175 kg |
| Gross weight | 198 |
| Package weight | 198 kg |
| Unit of weight | kg |
| Connection power kW | 0.4 |
| Connection voltage V | 230 |
| Number of phases | 1NPE |
| Frequency Hz | 50 |
| Type of electrical connection | Plug |
| Electrical conn. height mm | 50 |
| Cooling capacity W | 596 |
| Type of the refrigerant | R290 |
| Remarks (refrigeration) | +2°C/+10°C |

Vertical cold display Metos

Luxor KP8A black

Metos Luxor KP8A is an elegant, innovative and adaptable vertical slim display that creates an attractive and exclusive environment for the products sold. In addition to the walls and shelves that are made of hardened glass, the barely noticeable shelf support system allows for an unobstructed view of the products inside the display.

The Metos Luxor KP8A vertical display is intended for storing confectionery products and drinks. Equipped with five (700x470 mm) glass shelves, shade adjustable LED-lights and a right hinged door, the vertical cold display creates a clear and light frame for products. The display's cold area can be set to between +2°C...+10°C. The display has a cooling system with a fan, which distributes the air evenly across the whole area.

The display's frame is covered with black (RAL 9005) silk printing. The lower part of the frame masterfully hides the wheels, enabling the easy movability of the display. The display has an automatic melting and water evaporating system.

- five glass shelves (700x470 mm), weight limit 12 kg/per shelf
- cold area +2°...+10°C
- right hinged door
- LED-lights at the corners, shade adjustable between 3000-6000K
- HACCP alarm system
- electronic control board with a digital screen
- automatic melting and water evaporating system
- black silk printed frame, hardened glass walls and shelves, stainless steel shelf support system
- the display works in an environment where the max. temperature is +30°C and the relative humidity is 55%

Delivery includes:



- five glass shelves with support system

Optional accessories (order separately):

- extra glass shelf with support system
- bottle rack shelf for 14 bottles
- five glass shelves with support system

Optional accessories (order separately):

- extra glass shelf with support system
- bottle rack shelf for 14 bottles

Vertical cold display Metos Luxor KP8A black

| | |
|-------------------------------|--------------|
| Product capacity | 490 litres |
| Item width mm | 805 |
| Item depth mm | 645 |
| Item height mm | 1840 |
| Package volume | 1.366 |
| Unit of volume | m3 |
| Package volume | 1.366 m3 |
| Package length | 89 |
| Package width | 76 |
| Package height | 202 |
| Package unit of dimension | cm |
| Package dimensions (LxWxH) | 89x76x202 cm |
| Net weight | 225 |
| Net weight | 225 kg |
| Gross weight | 247 |
| Package weight | 247 kg |
| Unit of weight | kg |
| Connection power kW | 0.55 |
| Connection voltage V | 230 |
| Number of phases | 1NPE |
| Frequency Hz | 50 |
| Type of electrical connection | Plug |
| Electrical conn. height mm | 50 |
| Type of the refrigerant | R290 |
| Remarks (refrigeration) | +2°C/+10°C |

Vertical cold display Metos

Luxor KP8V white

Metos Luxor KP8V is an elegant, innovative and adaptable vertical slim display that creates an attractive and exclusive environment for the products sold. In addition to the walls and shelves that are made of hardened glass, the barely noticeable shelf support system allows for an unobstructed view of the products inside the display.

The Metos Luxor KP8V vertical display is intended for storing confectionery products and drinks. Equipped with five (700x470 mm) glass shelves, shade adjustable LED-lights and a right hinged door, the vertical cold display creates a clear and light frame for products. The display's cold area can be set to between +2°C...+10°C. The display has a cooling system with a fan, which distributes the air evenly across the whole area.

The display's frame is covered with white (RAL 9010) silk printing. The lower part of the frame masterfully hides the wheels, enabling the easy movability of the display. The display has an automatic melting and water evaporating system.

- five glass shelves (700x470 mm), weight limit 12 kg/per shelf
- cold area +2°...+10°C
- right hinged door
- LED-lights at the corners, shade adjustable between 3000-6000K
- electronic control board with a digital screen
- HACCP alarm system
- automatic melting and water evaporating system
- white silk printed frame, hardened glass walls and shelves, stainless steel shelf support system
- the display works in an environment where the max. temperature is +30°C and the relative humidity is 55%

Delivery includes:



- five glass shelves with support system

Optional accessories (order separately):

- extra glass shelf with support system
- bottle rack shelf for 14 bottles
- five glass shelves with support system

Optional accessories (order separately):

- extra glass shelf with support system
- bottle rack shelf for 14 bottles

Vertical cold display Metos Luxor KP8V white

| | |
|-------------------------------|--------------|
| Product capacity | 490 litres |
| Item width mm | 805 |
| Item depth mm | 645 |
| Item height mm | 1840 |
| Package volume | 1.366 |
| Unit of volume | m3 |
| Package volume | 1.366 m3 |
| Package length | 89 |
| Package width | 76 |
| Package height | 202 |
| Package unit of dimension | cm |
| Package dimensions (LxWxH) | 89x76x202 cm |
| Net weight | 225 |
| Net weight | 225 kg |
| Gross weight | 247 |
| Package weight | 247 kg |
| Unit of weight | kg |
| Connection power kW | 0.55 |
| Connection voltage V | 230 |
| Number of phases | 1NPE |
| Frequency Hz | 50 |
| Type of electrical connection | Plug |
| Electrical conn. height mm | 50 |
| Type of the refrigerant | R290 |
| Remarks (refrigeration) | +2°C/+10°C |

Vertical cold display Metos Luxor Slim KP6A black

Metos Luxor Classic Slim KP6A is an elegant, innovative and adaptable vertical slim display that creates an attractive and exclusive environment for the products sold. In addition to the walls and shelves that are made of hardened glass, the barely noticeable shelf support system allows for an unobstructed view of the products inside the display.

At only 60 cm wide, the Metos Luxor Classic Slim KP6A vertical display is intended for storing confectionery products and drinks. Equipped with five (490x470 mm) glass shelves, shade adjustable LED-lights and a right hinged door, the vertical cold display creates a clear and light frame for products. The display's cold area can be set to between +2°C...+10°C. The display has a cooling system with a fan, which distributes the air evenly across the whole area.

The display's frame is covered with black (RAL 9005) silk printing. The lower part of the frame masterfully hides the wheels, enabling the easy movability of the display. The display has an automatic melting and water evaporating system.

- five glass shelves (490x470 mm), weight limit 12 kg/per shelf
- cold area +2°...+10°C
- right hinged door
- LED-lights at the corners, shade adjustable between 3000-6000K
- HACCP alarm system
- electronic control board with a digital screen
- automatic melting and water evaporating system
- black silk printed frame, hardened glass walls and shelves, stainless steel shelf support system
- the display works in an environment where the max. temperature is +30°C and the relative



humidity is 55%

Delivery includes:

- five glass shelves with support system

Optional accessories (order separately):

- extra glass shelf with support system
- bottle rack shelf for 14 bottles humidity is 55%

Delivery includes:

- five glass shelves with support system

Optional accessories (order separately):

- extra glass shelf with support system
- bottle rack shelf for 14 bottles

Vertical cold display Metos Luxor Slim KP6A black

| | |
|-------------------------------|--------------|
| Product capacity | 324 litres |
| Item width mm | 600 |
| Item depth mm | 645 |
| Item height mm | 1840 |
| Package volume | 1.136 |
| Unit of volume | m3 |
| Package volume | 1.136 m3 |
| Package length | 74 |
| Package width | 76 |
| Package height | 202 |
| Package unit of dimension | cm |
| Package dimensions (LxWxH) | 74x76x202 cm |
| Net weight | 175 |
| Net weight | 175 kg |
| Gross weight | 198 |
| Package weight | 198 kg |
| Unit of weight | kg |
| Connection power kW | 0.4 |
| Connection voltage V | 230 |
| Number of phases | 1NPE |
| Frequency Hz | 50 |
| Type of electrical connection | Plug |
| Electrical conn. height mm | 50 |
| Cooling capacity W | 596 |
| Type of the refrigerant | R290 |
| Remarks (refrigeration) | +2°C/+10°C |

CODE: MG4310438

Display Metos Cube II 1500 Black, service model

An elegant, black, serve over showcase Metos Cube II 1500 for desserts, sweets, ideal for pastry shops, bakeries, shops, restaurants, gas stations.



Full description

Technical specifications

An elegant, black, serve over showcase Metos Cube II 1500 for desserts, sweets, ideal for pastry shops, bakeries, shops, restaurants, gas stations.

- stylish waiter service display in which excellent presentation of goods
- upper part square-shaped with elegant black details
- LED light in upper part of display
- glass structure of upper part tempered double glass
- 3 shelves made of tempered glass
- temperature area +4...+8°C
- ventilated cooling
- electronic control unit
- automatic defrost and evaporation
- hinged front glass for easy cleaning
- rear sliding doors placed on bearings for easy and comfortable handling
- quick and easy maintenance
- display board and front panel colour black (RAL9005), other RAL colours available as optional

GENERAL

| | |
|-------------|---|
| Description | Display Metos Cube II 1500 Black, service model |
|-------------|---|

DIMENSIONS AND CAPACITY

| | |
|----------------------------|--------------------------------|
| Product capacity | display area 2,1m ² |
| Item width mm | 1490 |
| Item depth mm | 742 |
| Item height mm | 1344 |
| Package volume | 1.856 m3 |
| Package dimensions (LxWxH) | 160x80x145 cm |
| Net weight | 264 kg |
| Package weight | 290 kg |

TECHNICAL INFORMATION

| | |
|-------------------------|---------|
| Connection power kW | 0.79 |
| Connection voltage V | 230 |
| Number of phases | 1NPE |
| Frequency Hz | 50 |
| Type of the refrigerant | R1234yf |

FEATURES

| | |
|---------------------|-----------|
| Temperature area °C | +4 / +8°C |
| Lighting | LED |
| Defrosting | automatic |

INSTALLATION

| | |
|--------------|---------------|
| Installation | free standing |
|--------------|---------------|

ENERGY AND CONSUMPTION

| | |
|-----------------------|------|
| Energy class rating | F |
| Daily power cons. kWh | 12.8 |

CODE: MG4310436

Display Metos Cube II 600 Black, service model

An elegant, black, serve over showcase Metos Cube II 600 for desserts, sweets, ideal for pastry shops, bakeries, shops, restaurants, gas stations.



Full description

Technical specifications

An elegant, black, serve over showcase Metos Cube II 600 for desserts, sweets, ideal for pastry shops, bakeries, shops, restaurants, gas stations.

- stylish waiter service display in which excellent presentation of goods
- upper part square-shaped with elegant black details
- LED light in upper part of display
- glass structure of upper part tempered double glass
- 3 shelves made of tempered glass
- temperature area +4...+8°C
- ventilated cooling
- electronic control unit
- automatic defrost and evaporation
- hinged front glass for easy cleaning
- rear sliding doors placed on bearings for easy and comfortable handling
- quick and easy maintenance
- display board and front panel colour black (RAL9005), other RAL colours available as optional

GENERAL

| | |
|-------------|--|
| Description | Display Metos Cube II 600 Black, service model |
|-------------|--|

DIMENSIONS AND CAPACITY

| | |
|----------------------------|---------------------|
| Product capacity | display area 0,84m² |
| Item width mm | 590 |
| Item depth mm | 742 |
| Item height mm | 1344 |
| Package volume | 0.672 m3 |
| Package dimensions (LxWxH) | 60x80x140 cm |
| Net weight | 143 kg |
| Package weight | 153 kg |

TECHNICAL INFORMATION

| | |
|-------------------------|---------|
| Connection power kW | 0.415 |
| Connection voltage V | 230 |
| Number of phases | 1NPE |
| Frequency Hz | 50 |
| Type of the refrigerant | R1234yf |

FEATURES

| | |
|---------------------|-----------|
| Function | cold |
| Temperature area °C | +4 / +8°C |
| Lighting | LED |
| Defrosting | automatic |

INSTALLATION

| | |
|--------------|---------------|
| Installation | free standing |
|--------------|---------------|

ENERGY AND CONSUMPTION

| | |
|-----------------------|-----|
| Energy class rating | E |
| Daily power cons. kWh | 6.4 |

CODE: MG4310437

Display Metos Cube II 1000 Black, service model

An elegant, black, serve over showcase Metos Cube II 1000 for desserts, sweets, ideal for pastry shops, bakeries, shops, restaurants, gas stations.



Full description

Technical specifications

An elegant, black, serve over showcase Metos Cube II 1000 for desserts, sweets, ideal for pastry shops, bakeries, shops, restaurants, gas stations.

- stylish waiter service display in which excellent presentation of goods
- upper part square-shaped with elegant black details
- LED light in upper part of display
- glass structure of upper part tempered double glass
- 3 shelves made of tempered glass
- temperature area +4...+8°C
- ventilated cooling
- electronic control unit
- automatic defrost and evaporation
- hinged front glass for easy cleaning
- rear sliding doors placed on bearings for easy and comfortable handling
- quick and easy maintenance
- display board and front panel colour black (RAL9005), other RAL colours available as optional

GENERAL

| | |
|-------------|---|
| Description | Display Metos Cube II 1000 Black, service model |
|-------------|---|

DIMENSIONS AND CAPACITY

| | |
|----------------------------|---------------------|
| Product capacity | display area 1,46m² |
| Item width mm | 990 |
| Item depth mm | 742 |
| Item height mm | 1344 |
| Package volume | 1.218 m3 |
| Package dimensions (LxWxH) | 105x80x145 cm |
| Net weight | 207 kg |
| Package weight | 230 kg |

TECHNICAL INFORMATION

| | |
|-------------------------|---------|
| Connection power kW | 0.515 |
| Connection voltage V | 230 |
| Number of phases | 1NPE |
| Frequency Hz | 50 |
| Type of the refrigerant | R1234yf |

FEATURES

| | |
|---------------------|-----------|
| Function | cold |
| Temperature area °C | +4 / +8°C |
| Lighting | LED |
| Defrosting | automatic |

INSTALLATION

| | |
|--------------|---------------|
| Installation | free standing |
|--------------|---------------|

ENERGY AND CONSUMPTION

| | |
|-----------------------|------|
| Energy class rating | E |
| Daily power cons. kWh | 7.17 |

CODE: MG4310313

Display unit Metos Kentucky Cold 600

Forced air cooling. Temperature range +2 - +6 C



Full description

Technical specifications

Forced air cooling. Temperature range +2 - +6 C

- automatic defrosting
- lightning from top
- stainless steel construction

Accessories with extra price:

- mirrored back door
- cutting board

GENERAL

| | |
|-------------|--------------------------------------|
| Description | Display unit Metos Kentucky Cold 600 |
|-------------|--------------------------------------|

DIMENSIONS AND CAPACITY

| | |
|----------------------------|-------------|
| Product capacity | two shelves |
| Item width mm | 600 |
| Item depth mm | 775 |
| Item height mm | 585 |
| Package volume | 0 m3 |
| Package dimensions (LxWxH) | 0x0x0 cm |
| Net weight | 84 kg |
| Package weight | 94 kg |

TECHNICAL INFORMATION

| | |
|-------------------------------|---------|
| Connection power kW | 0.33 |
| Fuse Size A | 6 |
| Connection voltage V | 230 |
| Number of phases | 1N |
| Frequency Hz | 50 |
| Type of electrical connection | Plug |
| Electrical conn. height mm | 25 |
| Type of the refrigerant | R1234YF |

Pizza display unit Metos

UM50 230V 1~

Lluminated display, 3 rotating shelves, diam. 370 mm. Ater
resevoir, thermostatically controlle



Pizza display unit Metos UM50 230V 1~

| | |
|-------------------------------|-----------------|
| Product capacity | 3 pizzas |
| Item width mm | 565 |
| Item depth mm | 565 |
| Item height mm | 780 |
| Package volume | 0.389 |
| Unit of volume | m3 |
| Package volume | 0.389 m3 |
| Package length | 66.5 |
| Package width | 88 |
| Package height | 66.5 |
| Package unit of dimension | cm |
| Package dimensions (LxWxH) | 66.5x88x66.5 cm |
| Net weight | 37 |
| Net weight | 37 kg |
| Gross weight | 40 |
| Package weight | 40 kg |
| Unit of weight | kg |
| Connection power kW | 1.5 |
| Fuse Size A | 10 |
| Connection voltage V | 230 |
| Number of phases | 1N |
| Frequency Hz | 50 |
| Type of electrical connection | Plug |
| Electrical conn. height mm | 25 |

Merchandising display warmer Metos GRSDH-41D CSC CE

Black combi merchandiser with heated shelves. Products can be displayed to their full advantage boosting impulse buying of hot pre-packaged snacks

- merchandise warmer holds hot food safe at proper serving temperatures on two levels
- thermostatically-controlled heated base with a temperature range of +85°C to +93°C to extend holding times
- pre-focused infrared top directs heat even to the outer edges of the holding surface where heat loss is the greatest
- coated shatter-resistant incandescents enhance product display safeguarding food products from bulb breakage
- horizontal shelves so that unit can be used as 2-sided
- glass walls on each side



Merchandising display warmer Metos GRSDH-41D CSC CE

| | |
|-------------------------------|--------------------|
| Item width mm | 1041 |
| Item depth mm | 605 |
| Item height mm | 910 |
| Package volume | 0.331 |
| Unit of volume | m3 |
| Package volume | 0.331 m3 |
| Package length | 104.1 |
| Package width | 49.5 |
| Package height | 64.3 |
| Package unit of dimension | cm |
| Package dimensions (LxWxH) | 104.1x49.5x64.3 cm |
| Net weight | 53 |
| Net weight | 53 kg |
| Gross weight | 62 |
| Package weight | 62 kg |
| Unit of weight | kg |
| Connection power kW | 3 |
| Fuse Size A | 13 |
| Connection voltage V | 220-240 |
| Number of phases | 1NPE |
| Frequency Hz | 50 |
| Type of electrical connection | Plug |

Pizza display unit Metos UM50D 230V 1~

Illuminated display, 3 rotating shelves, diam. 370 mm. Water
resevoir, thermostatically controlled
- doors on two sides



Pizza display unit Metos UM50D 230V 1~

| | |
|-------------------------------|-----------------|
| Product capacity | 3 pizzas |
| Item width mm | 565 |
| Item depth mm | 565 |
| Item height mm | 780 |
| Package volume | 0.389 |
| Unit of volume | m3 |
| Package volume | 0.389 m3 |
| Package length | 66.5 |
| Package width | 88 |
| Package height | 66.5 |
| Package unit of dimension | cm |
| Package dimensions (LxWxH) | 66.5x88x66.5 cm |
| Net weight | 37 |
| Net weight | 37 kg |
| Gross weight | 40 |
| Package weight | 40 kg |
| Unit of weight | kg |
| Connection power kW | 1.5 |
| Fuse Size A | 10 |
| Connection voltage V | 230 |
| Number of phases | 1N |
| Frequency Hz | 50 |
| Type of electrical connection | Plug |
| Electrical conn. height mm | 25 |

CODE: MG4148030

Display Warmer Metos GR2SDS-36D



Technical specifications

Attachments

GENERAL

| | |
|-------------|--------------------------------------|
| Description | Display Warmer Metos GR2SDS-36D Flip |
|-------------|--------------------------------------|

DIMENSIONS AND CAPACITY

| | |
|----------------------------|----------------------|
| Product capacity | 7 dividers per shelf |
| Item width mm | 1073 |
| Item depth mm | 723 |
| Item height mm | 860 |
| Package volume | 0.01 m3 |
| Package dimensions (LxWxH) | 0x0x0 cm |
| Net weight | 80 kg |
| Package weight | 86 kg |

TECHNICAL INFORMATION

| | |
|-------------------------------|------|
| Connection power kW | 2.44 |
| Fuse Size A | 10 |
| Connection voltage V | 230 |
| Number of phases | 1N |
| Frequency Hz | 50 |
| Type of electrical connection | Plug |
| Electrical conn. height mm | 25 |

Merchandiser Metos Hot 2L Combi

Black combi merchandiser with heated upper part and neutral trolley with bottom shelf. Products can be displayed to their full advantage boosting combined impulse buying of both hot and neutral pre-packaged snacks and food solutions

- merchandise warmer holds hot food safe at proper serving temperatures on two levels
- thermostatically-controlled heated base with a temperature range of +85°C to +93°C to extend holding times
- pre-focused infrared top directs heat even to the outer edges of the holding surface where heat loss is the greatest
- coated shatter-resistant incandescents lights enhance product display safeguarding food products from bulb breakage
- horizontal shelves so that unit can be used as 2-sided
- glass walls on each side
- liftable side tray on one side for displaying food products (300x505)
- rail on one side for hooks where e.g. bread basket can be hung
- lockable wheels



Merchandiser Metos Hot 2L Combi

| | |
|-------------------------------|---------------|
| Item width mm | 1055 |
| Item depth mm | 505 |
| Item height mm | 1630 |
| Package volume | 1.103 |
| Unit of volume | m3 |
| Package volume | 1.103 m3 |
| Package length | 105 |
| Package width | 60 |
| Package height | 175 |
| Package unit of dimension | cm |
| Package dimensions (LxWxH) | 105x60x175 cm |
| Net weight | 53 |
| Net weight | 53 kg |
| Gross weight | 63 |
| Package weight | 63 kg |
| Unit of weight | kg |
| Connection power kW | 2.68 |
| Fuse Size A | 11 |
| Connection voltage V | 220-240 |
| Number of phases | 1NPE |
| Frequency Hz | 50 |
| Type of electrical connection | Plug |

CODE: MG4000288

Drop-in Hot display Metos W GR-112-53

Hot display cases, drop-in hot displays(cut-out size 1105x670 mm), closed front, height 530 mm, curved.



Full description

Technical specifications

Hot display cases, drop-in hot displays(cut-out size 1105x670 mm), closed front, height 530 mm, curved.

- Customer side: Tempered front glass
- Operator side: Insulated glass hinged doors for model
- Shelf made of tempered black glass.
- Side panes are tempered.
- Surrounding mounting flange.
- Heating system: Quartz-Infrared heaters per presentation level ensure an optimal core temperature of your goods.
- Heating plate: Heated base deck made from tempered black glass with heating element below and stainless steel frame.
- Temperature range adjustable stepless via electronic thermostat.
- Control unit with digital temperature display mounted in the terminal box, supplied loose.

GENERAL

| | |
|-------------|---------------------------------------|
| Description | Drop-in Hot display Metos W GR-112-53 |
|-------------|---------------------------------------|

DIMENSIONS AND CAPACITY

| | |
|----------------------------|----------------------|
| Product capacity | display area 1,00 m2 |
| Item width mm | 1125 |
| Item depth mm | 695 |
| Item height mm | 530/630 |
| Package volume | 1.784 m3 |
| Package dimensions (LxWxH) | 145x100x123 cm |
| Net weight | 209 kg |
| Package weight | 234 kg |

TECHNICAL INFORMATION

| | |
|---------------------------|--------|
| Connection power kW | 1.75 |
| Connection voltage V | 230 |
| Number of phases | 1NPE |
| Frequency Hz | 50 |
| Type of the refrigerant | R-134a |
| Quantity of refrigerant g | 370 |

FEATURES

| | |
|---------------------|----------------|
| Function | warm |
| Temperature area °C | +65°C to +85°C |
| Lighting | LED |

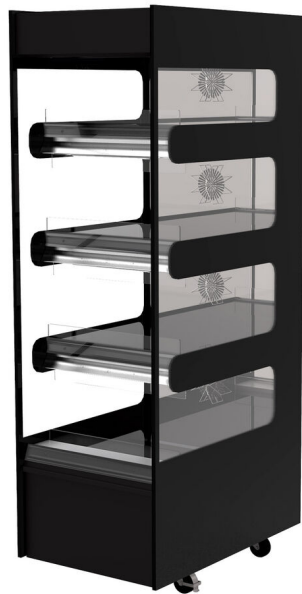
INSTALLATION

| | |
|-----------------|----------|
| Installation | drop-in |
| Opening size mm | 1105x670 |

CODE: MG4001019

Heated display Metos Flexeserve 600 Zone 4 Tier, Square

Metos Flexeserve Zone® uses convection technology. The tight air curtains within Flexeserve Zone® retain the hot air within the unit. Zones can have their own s...



Full description

Technical specifications

Metos Flexeserve Zone® uses convection technology. The tight air curtains within Flexeserve Zone® retain the hot air within the unit. Zones can have their own set temperature and you can also switch them off independently to suit different trading patterns throughout the day, saving energy. There is an insulated thermal barrier between each zone to prevent heat transfer from the zone above or below. As each zone has its own individual controller, if one was out of operation, the remaining zones work as normal allowing trade to continue.

- easy to use control panel
- double-glazed end panels
- LED lighting for each zone
- flat shelves (4 pcs)
- accurate, individually-controlled temperature zones
- temperature range 65-85°C / Off / Zone
- energy saving features
- easy-to-clean surfaces

GENERAL

| | |
|-------------|---|
| Description | Heated display Metos Flexeserve 600 Zone 4 Tier, Square |
|-------------|---|

DIMENSIONS AND CAPACITY

| | |
|----------------------------|--------------|
| Product capacity | 4 levels |
| Item width mm | 556 |
| Item depth mm | 855 |
| Item height mm | 1865 |
| Package volume | 1.088 m3 |
| Package dimensions (LxWxH) | 62x90x195 cm |
| Net weight | 196 kg |
| Package weight | 220 kg |

TECHNICAL INFORMATION

| | |
|-------------------------------|------|
| Connection power kW | 3 |
| Fuse Size A | 16 |
| Connection voltage V | 230 |
| Number of phases | 1NPE |
| Frequency Hz | 50 |
| Type of electrical connection | Plug |

CODE: MG4310755

Heating cabinet Metos Flexserve Hub 600 Euro-RH, door hinged to righthand side.

Flexeserve Hub® is an enclosed hot-holding unit with maximum versatility in a small footprint. Utilising Flexeserve® hot air technology to hold large quantities...



Full description

Technical specifications

Flexeserve Hub® is an enclosed hot-holding unit with maximum versatility in a small footprint. Utilising Flexeserve® hot air technology to hold large quantities of packaged food, of any shape and size

Heating cabinet with glass in side walls and door. Glass door that is hinged to the right. 5 inclined display shelves. The cabinet can be easily rolled on wheels.

GENERAL

| | |
|-------------|---|
| Description | Heating cabinet Metos Flexserve Hub 600 Euro-RH, door hinged to righthand side. |
|-------------|---|

DIMENSIONS AND CAPACITY

| | |
|----------------------------|---------------|
| Item width mm | 555 |
| Item depth mm | 860 |
| Item height mm | 1874 |
| Package volume | 1.856 m3 |
| Package dimensions (LxWxH) | 111x75x223 cm |
| Net weight | 190 kg |
| Package weight | 220 kg |

TECHNICAL INFORMATION

| | |
|-------------------------------|--------|
| Connection power kW | 1.4 |
| Fuse Size A | 13 |
| Connection voltage V | 230 |
| Number of phases | 1PE |
| Frequency Hz | 50 |
| Electrical cable length mm | 3000 |
| Type of electrical connection | Plug |
| Electrical conn. inlet | Behind |
| Electrical conn. height mm | 140 |

CODE: MG4001506

Modular Visual Holding Cabinet Metos XMHG42SAT1W

Modular Visual Holding Cabinets keep food hot, fresh and ready for easy assembly! Allows more flexibility in holding options for greater menu variety - go ahead...

Full description Technical specifications

Modular Visual Holding Cabinets keep food hot, fresh and ready for easy assembly! Allows more flexibility in holding options for greater menu variety - go ahead, prepare and hold food prior to serving. The easy to maintain design and simple operation features reduce employee time spent on cleaning and training; increasing customer satisfaction by providing higher product quality in a shorter amount of time.

- Multiple configurations and sizes to fit your kitchen space
- Large, colorful, easy-to-read touch screen displays product name and status for each holding tray.
- Programmable menu, with up to 6 different day-parts. Easily customizable on-screen, or by using MenuConnect application and USB upload to the cabinet
- Innovative airflow technology with climate controlled cabinet. DuoHeat technology provides the perfect combination of convection & radiant heat. Designed to hold both crispy and juicy foods
- Wi-Fi Capable
- Able to display multiple languages
- Cool touch insulation keeps exterior surfaces cool while food is held at proper serving temps
- Designed to hold up to 8 standard 1/3 size high-temperature holding trays
- Small footprint allows cabinet to fit in small operations
- Included stainless steel covers seal trays to prevent moisture loss and are removable for holding crisp foods and easy cleaning
- Removable back for pass-through applications
- Available with touch screen on both sides
- Sturdy, sanitary & reliable stainless steel construction
- All cabinets include a 6ft / 1829mm cord

Including 6 pcs 8030495 Stainless Steel Trivet (Tray Insert) and 6 pcs 8030490 Single Handled Tray

GENERAL

| | |
|-------------|--|
| Description | Modular Visual Holding Cabinet Metos XMHG42SAT1W |
|-------------|--|

DIMENSIONS AND CAPACITY

| | |
|----------------------------|-------------|
| Item width mm | 521 |
| Item depth mm | 330 |
| Item height mm | 541 |
| Package volume | 0.151 m3 |
| Package dimensions (LxWxH) | 58x40x65 cm |
| Net weight | 30 kg |
| Package weight | 35 kg |

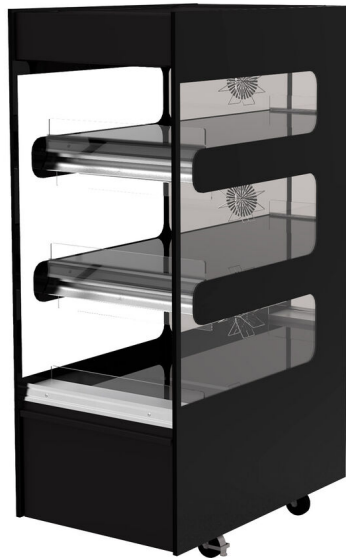
TECHNICAL INFORMATION

| | |
|-------------------------------|-------|
| Connection power kW | 2.861 |
| Fuse Size A | 16 |
| Connection voltage V | 230 |
| Number of phases | 1NPE |
| Frequency Hz | 50/60 |
| Type of electrical connection | Plug |
| Drain diameter | 40 |

CODE: MG4001079

Heated display Metos Flexeserve 600 Zone 3 Tier, Square

Metos Flexeserve Zone® uses convection technology. The tight air curtains within Flexeserve Zone® retain the hot air within the unit. Zones can have their own s...



Full description

Technical specifications

Metos Flexeserve Zone® uses convection technology. The tight air curtains within Flexeserve Zone® retain the hot air within the unit. Zones can have their own set temperature and you can also switch them off independently to suit different trading patterns throughout the day, saving energy. There is an insulated thermal barrier between each zone to prevent heat transfer from the zone above or below. As each zone has its own individual controller, if one was out of operation, the remaining zones work as normal allowing trade to continue.

- easy to use control panel
- double-glazed end panels
- LED lighting for each zone
- flat shelves (3 pcs)
- accurate, individually-controlled temperature zones
- temperature range 65-85°C / Off / Zone
- energy saving features
- easy-to-clean surfaces

GENERAL

| | |
|-------------|---|
| Description | Heated display Metos Flexeserve 600 Zone 3 Tier, Square |
|-------------|---|

DIMENSIONS AND CAPACITY

| | |
|----------------------------|--------------|
| Product capacity | 3 levels |
| Item width mm | 556 |
| Item depth mm | 855 |
| Item height mm | 1520 |
| Package volume | 0.921 m3 |
| Package dimensions (LxWxH) | 62x90x165 cm |
| Net weight | 148 kg |
| Package weight | 165 kg |

TECHNICAL INFORMATION

| | |
|-------------------------------|------|
| Connection power kW | 2.25 |
| Fuse Size A | 16 |
| Connection voltage V | 230 |
| Number of phases | 1NPE |
| Frequency Hz | 50 |
| Type of electrical connection | Plug |

CODE: MG4210756

Heated display Metos Flexeserve 600 Zone 2 Tier, Square

Metos Flexeserve Zone® uses convection technology. The tight air curtains within Flexeserve Zone® retain the hot air within the unit. Zones can have their own s...



Full description

Technical specifications

Metos Flexeserve Zone® uses convection technology. The tight air curtains within Flexeserve Zone® retain the hot air within the unit. Zones can have their own set temperature and you can also switch them off independently to suit different trading patterns throughout the day, saving energy. There is an insulated thermal barrier between each zone to prevent heat transfer from the zone above or below. As each zone has its own individual controller, if one was out of operation, the remaining zones work as normal allowing trade to continue.

- easy to use control panel
- double-glazed end panels
- LED lighting for each zone
- flat shelves (2 pcs)
- accurate, individually-controlled temperature zones
- temperature range 65-85°C / Off / Zone
- energy saving features
- easy-to-clean surfaces

GENERAL

| | |
|-------------|---|
| Description | Heated display Metos Flexeserve 600 Zone 2 Tier, Square |
|-------------|---|

DIMENSIONS AND CAPACITY

| | |
|----------------------------|--------------|
| Product capacity | 2 levels |
| Item width mm | 556 |
| Item depth mm | 660 |
| Item height mm | 884 |
| Package volume | 0.598 m3 |
| Package dimensions (LxWxH) | 77x70x111 cm |
| Net weight | 86 kg |
| Package weight | 101 kg |

TECHNICAL INFORMATION

| | |
|-------------------------------|-------|
| Connection power kW | 1.378 |
| Fuse Size A | 16 |
| Connection voltage V | 230 |
| Number of phases | 1NPE |
| Frequency Hz | 50 |
| Type of electrical connection | Plug |

CODE: MG4310314

Display unit Metos Kentucky Hot 3GN

Intenal fan and water drawer. Temperature range +30 - +90 C



Full description

Technical specifications

Intenal fan and water drawer. Temperature range +30 - +90 C

- mechanical thermostat
- lightning from top
- stainless steel construction
- Extra accessories:
 - mirrored back door
 - cutting board

GENERAL

| | |
|-------------|-------------------------------------|
| Description | Display unit Metos Kentucky Hot 3GN |
|-------------|-------------------------------------|

DIMENSIONS AND CAPACITY

| | |
|----------------------------|---------------|
| Product capacity | three shelves |
| Item width mm | 1080 |
| Item depth mm | 775 |
| Item height mm | 745 |
| Package volume | 0 m3 |
| Package dimensions (LxWxH) | 0x0x0 cm |
| Net weight | 89 kg |
| Package weight | 99 kg |

TECHNICAL INFORMATION

| | |
|-------------------------------|------|
| Connection power kW | 2.26 |
| Fuse Size A | 16 |
| Connection voltage V | 230 |
| Number of phases | 1N |
| Frequency Hz | 50 |
| Type of electrical connection | Plug |
| Electrical conn. height mm | 25 |

CODE: MG4310316

Display unit Kentucky Hot 4GN 230V1~

Intenal fan and water drawer. Temperature range +30 - +90 C



Full description

Technical specifications

Attachments

Intenal fan and water drawer. Temperature range +30 - +90 C

- mechanical thermostat
- lightning from top
- stainless steel construction
- Extra accessories:
 - mirrored back door
 - cutting board

GENERAL

| | |
|-------------|--------------------------------------|
| Description | Display unit Kentucky Hot 4GN 230V1~ |
|-------------|--------------------------------------|

DIMENSIONS AND CAPACITY

| | |
|----------------------------|---------------|
| Product capacity | three shelves |
| Item width mm | 1410 |
| Item depth mm | 775 |
| Item height mm | 585 |
| Package volume | 0 |
| Package dimensions (LxWxH) | 0x0x0 cm |
| Net weight | 100 kg |
| Package weight | 110 kg |

TECHNICAL INFORMATION

| | |
|-------------------------------|------|
| Connection power kW | 3.36 |
| Fuse Size A | 16 |
| Connection voltage V | 230 |
| Number of phases | 1N |
| Frequency Hz | 50 |
| Type of electrical connection | Plug |
| Electrical conn. height mm | 25 |

CODE: MG4310312

Display unit Metos Kentucky Hot 2GN

Intenal fan and water drawer. Temperature range +30 - +90 C



Full description

Technical specifications

Attachments

Intenal fan and water drawer. Temperature range +30 - +90 C

- mechanical thermostat
- lightning from top
- stainless steel construction
- Extra accessories:
 - mirrored back door
 - cutting board

GENERAL

| | |
|-------------|-------------------------------------|
| Description | Display unit Metos Kentucky Hot 2GN |
|-------------|-------------------------------------|

DIMENSIONS AND CAPACITY

| | |
|----------------------------|---------------|
| Product capacity | three shelves |
| Item width mm | 750 |
| Item depth mm | 775 |
| Item height mm | 745 |
| Package volume | 0 m3 |
| Package dimensions (LxWxH) | 0x0x0 cm |
| Net weight | 69 kg |
| Package weight | 79 kg |

TECHNICAL INFORMATION

| | |
|-------------------------------|------|
| Connection power kW | 2.13 |
| Fuse Size A | 10 |
| Connection voltage V | 230 |
| Number of phases | 1N |
| Frequency Hz | 50 |
| Type of electrical connection | Plug |
| Electrical conn. height mm | 25 |

CODE: MG4310295

Display unit Kentucky Metos Standard Hot 1GN

Intenal fan and water drawer. Temperature range +30 - +90 C



Full description

Technical specifications

Intenal fan and water drawer. Temperature range +30 - +90 C

- mechanical thermostat
- lightning from top
- stainless steel construction
- Extra accessories:
- mirrored back door
- cutting board

GENERAL

| | |
|-------------|--|
| Description | Display unit Kentucky Metos Standard Hot 1GN |
|-------------|--|

DIMENSIONS AND CAPACITY

| | |
|----------------------------|-----------|
| Product capacity | one shelf |
| Item width mm | 480 |
| Item depth mm | 775 |
| Item height mm | 585 |
| Package volume | 0 m3 |
| Package dimensions (LxWxH) | 0x0x0 cm |
| Net weight | 40 kg |
| Package weight | 45 kg |

TECHNICAL INFORMATION

| | |
|---------------------|---|
| Connection power kW | 1 |
|---------------------|---|

CODE: MG4310296

Display Kentucky Standard Hot 2GN
230V1~



Technical specifications

GENERAL

| | |
|-------------|--|
| Description | Display Kentucky Standard Hot 2GN 230V1~ |
|-------------|--|

DIMENSIONS AND CAPACITY

| | |
|----------------------------|-------------|
| Product capacity | two shelves |
| Item width mm | 750 |
| Item depth mm | 775 |
| Item height mm | 585 |
| Package volume | 0 m3 |
| Package dimensions (LxWxH) | 0x0x0 cm |
| Net weight | 69 kg |
| Package weight | 79 kg |

TECHNICAL INFORMATION

| | |
|-------------------------------|------|
| Connection power kW | 2.13 |
| Fuse Size A | 10 |
| Connection voltage V | 230 |
| Number of phases | 1N |
| Frequency Hz | 50 |
| Type of electrical connection | Plug |
| Electrical conn. height mm | 25 |

CODE: MG4310298

Display Kentucky Standard Hot 3GN
230V1~



Technical specifications

GENERAL

| | |
|-------------|--|
| Description | Display Kentucky Standard Hot 3GN 230V1~ |
|-------------|--|

DIMENSIONS AND CAPACITY

| | |
|----------------------------|-------------|
| Product capacity | two shelves |
| Item width mm | 1080 |
| Item depth mm | 775 |
| Item height mm | 585 |
| Package volume | 0 m3 |
| Package dimensions (LxWxH) | 0x0x0 cm |
| Net weight | 69 kg |
| Package weight | 79 kg |

TECHNICAL INFORMATION

| | |
|-------------------------------|------|
| Connection power kW | 2.6 |
| Fuse Size A | 16 |
| Connection voltage V | 230 |
| Number of phases | 1N |
| Frequency Hz | 50 |
| Type of electrical connection | Plug |
| Electrical conn. height mm | 25 |

CODE: MG4310334

Display unit Metos Kentucky H SS 3GN

Intenal fan and water drawer. Temperature range +30 - +90 C



Full description

Technical specifications

Attachments

Intenal fan and water drawer. Temperature range +30 - +90 C

- mechanical thermostat
 - lightning from top
 - stainless steel construction
- Extra accessories:
- mirrored back door
 - cutting board

GENERAL

| | |
|-------------|--------------------------------------|
| Description | Display unit Metos Kentucky H SS 3GN |
|-------------|--------------------------------------|

DIMENSIONS AND CAPACITY

| | |
|----------------------------|-------------|
| Product capacity | two shelves |
| Item width mm | 1080 |
| Item depth mm | 730 |
| Item height mm | 575 |
| Package volume | 0 m3 |
| Package dimensions (LxWxH) | 0x0x0 cm |
| Net weight | 89 kg |
| Package weight | 99 kg |

TECHNICAL INFORMATION

| | |
|-------------------------------|------|
| Connection power kW | 2.26 |
| Fuse Size A | 16 |
| Connection voltage V | 230 |
| Number of phases | 1N |
| Frequency Hz | 50 |
| Type of electrical connection | Plug |
| Electrical conn. height mm | 25 |

CODE: MG4310332

Display unit Metos Kentucky H SS 2GN

Intenal fan and water drawer. Temperature range +30 - +90 C



Full description

Technical specifications

Attachments

Intenal fan and water drawer. Temperature range +30 - +90 C

- mechanical thermostat
- lightning from top
- stainless steel construction
- Extra accessories:
 - mirrored back door
 - cutting board

GENERAL

| | |
|---------------------------------------|--------------------------------------|
| Description | Display unit Metos Kentucky H SS 2GN |
| <u>DIMENSIONS AND CAPACITY</u> | |
| Product capacity | two shelves |
| Item width mm | 750 |
| Item depth mm | 730 |
| Item height mm | 575 |
| Package volume | 0 m3 |
| Package dimensions (LxWxH) | 0x0x0 cm |
| Net weight | 69 kg |
| Package weight | 79 kg |

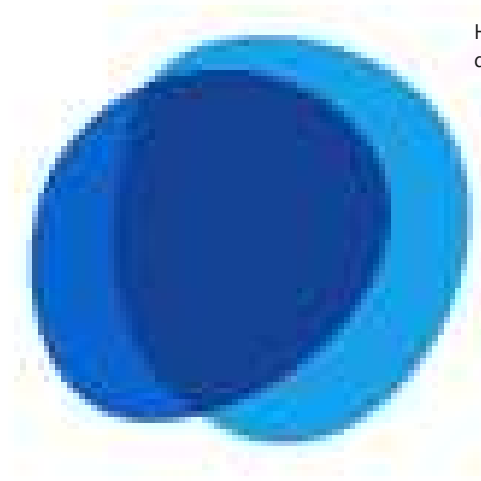
TECHNICAL INFORMATION

| | |
|-------------------------------|------|
| Connection power kW | 2.13 |
| Fuse Size A | 10 |
| Connection voltage V | 230 |
| Number of phases | 1N |
| Frequency Hz | 50 |
| Type of electrical connection | Plug |
| Electrical conn. height mm | 25 |

CODE: MG4310344

Display unit Metos Kentucky 1S High

Hot display unit for self service. Temperature range +30 - +90 C, water drawer



Full description

Technical specifications

Hot display unit for self service. Temperature range +30 - +90 C, water drawer

- mechanical thermostat
- fluorescent lightning
- stainless steel construction

GENERAL

| | |
|--------------------------------|-------------------------------------|
| Description | Display unit Metos Kentucky 1S High |
| DIMENSIONS AND CAPACITY | |
| Product capacity | three shelves |
| Item width mm | 616 |
| Item depth mm | 573 |
| Item height mm | 944 |
| Package volume | 0 m3 |
| Package dimensions (LxWxH) | 0x0x0 cm |
| Net weight | 50 kg |
| Package weight | 60 kg |

TECHNICAL INFORMATION

| | |
|-------------------------------|------|
| Connection power kW | 1 |
| Fuse Size A | 6 |
| Connection voltage V | 230 |
| Number of phases | 1N |
| Frequency Hz | 50 |
| Type of electrical connection | Plug |
| Electrical conn. height mm | 25 |

Deli display Metos newZita Mini 937 V

Imple rectangular-shaped design, which blends well into different kinds of interiors. Traight glass surfaces of the display minimizes the reflections and mirroring in the display enabling a good view of the displayed goods

- especially suitable for short time storage of e.g. meat, sandwiches, tapas and salads
- open from the service side, which makes the refrigerated display space easily accessible when filling it up with products from the cold cabinets
- products can be kept cold in the stainless steel cold cabinets
- functionable 280 mm work table made of stainless steel on the service side which allows plenty of space to work, e.g. when cutting or packing products
- display area and kick plates made of stainless steel
- front and side panels in grey laminate
- energy efficient LED lights which give light to the exhibited products
- equipped with fan assisted ventilated cooling system and a digital thermostat and thermometer.
- temperature range for the food exhibited in the display is -1°C...+5°C, when the ambient temperature is +25°C and humidity 60% R.H. (climate/temperature class 3M1)
- frame structure made of polyurethane, ensuring good insulation
- self-contained

Accessories:

- wide range of other laminate colours
- cashier and corner units
- central cooling
- sliding plexi doors on service side
- neutral glass shelf inside display
- cutting and balance boards
- knife holder



Deli display Metos newZita Mini 937 V

| | |
|-------------------------------|---------------|
| Product capacity | 214 litre |
| Item width mm | 1017 |
| Item depth mm | 948 |
| Item height mm | 1190/1210 |
| Package volume | 1.172 |
| Unit of volume | m3 |
| Package volume | 1.172 m3 |
| Package length | 102 |
| Package width | 95 |
| Package height | 121 |
| Package unit of dimension | cm |
| Package dimensions (LxWxH) | 102x95x121 cm |
| Net weight | 130 |
| Net weight | 130 kg |
| Gross weight | 216 |
| Package weight | 216 kg |
| Unit of weight | kg |
| Connection power kW | 0.43 |
| Fuse Size A | 16 |
| Connection voltage V | 230 |
| Number of phases | 1NPE |
| Frequency Hz | 50 |
| Type of electrical connection | Plug |
| Electrical conn. height mm | 50 |
| Drain diameter | 32 |
| Cooling capacity W | 429 |
| Type of the refrigerant | R290 |
| Quantity of refrigerant g | 120 |
| Sound level dB | 60 |

Deli display Metos newZita Mini 1875 V

Imple rectangular-shaped design, which blends well into different kinds of interiors. Traight glass surfaces of the display minimizes the reflections and mirroring in the display enabling a good view of the displayed goods

- especially suitable for short time storage of e.g. sandwiches, tapas and salads
- open from the service side, which makes the refrigerated display space easily accessible when filling it up with products from the cold cabinets
- products can be kept cold in the stainless steel cold cabinets
- functionable 280 mm work table made of stainless steel on the service side which allows plenty of space to work, e.g. when cutting or packing products
- display area and kick plates made of stainless steel
- front and side panels in grey laminate
- energy efficient LED lights which give light to the exhibited products
- equipped with fan assisted ventilated cooling system and a digital thermostat and thermometer.
- temperature range for the food exhibited in the display is -1°C...+5°C, when the ambient temperature is +25°C and humidity 60% R.H.(climate/temperature class 3M1)
- frame structure made of polyurethane, ensuring good insulation
- self-contained

Accessories:

- wide range of other laminate colours
- cashier and corner units
- central cooling
- sliding plexi doors on service side
- neutral glass shelf inside display
- cutting and balance boards
- knife holder



Deli display Metos newZita Mini 1875 V

| | |
|-------------------------------|-----------------|
| Product capacity | 429 litre |
| Item width mm | 1955 |
| Item depth mm | 948 |
| Item height mm | 1190/1210 |
| Package volume | 2.247 |
| Unit of volume | m3 |
| Package volume | 2.247 m3 |
| Package length | 195.5 |
| Package width | 95 |
| Package height | 121 |
| Package unit of dimension | cm |
| Package dimensions (LxWxH) | 195.5x95x121 cm |
| Net weight | 185 |
| Net weight | 185 kg |
| Gross weight | 293 |
| Package weight | 293 kg |
| Unit of weight | kg |
| Connection power kW | 0.67 |
| Fuse Size A | 16 |
| Connection voltage V | 230 |
| Number of phases | 1NPE |
| Frequency Hz | 50 |
| Type of electrical connection | Plug |
| Electrical conn. height mm | 50 |
| Drain diameter | 32 |
| Cooling capacity W | 599 |
| Type of the refrigerant | R290 |
| Quantity of refrigerant g | 150 |
| Sound level dB | 60 |

Deli display Metos newZita Mini 1562 V

Imple rectangular-shaped design, which blends well into different kinds of interiors. Traight glass surfaces of the display minimizes the reflections and mirroring in the display enabling a good view of the displayed goods

- especially suitable for short time storage of e.g. sandwiches, tapas and salads
- open from the service side, which makes the refrigerated display space easily accessible when filling it up with products from the cold cabinets
- products can be kept cold in the stainless steel cold cabinets
- functionable 280 mm work table made of stainless steel on the service side which allows plenty of space to work, e.g. when cutting or packing products
- display area and kick plates made of stainless steel
- front and side panels in grey laminate
- energy efficient LED lights which give light to the exhibited products
- equipped with fan assisted ventilated cooling system and a digital thermostat and thermometer.
- temperature range for the food exhibited in the display is -1°C...+5°C, when the ambient temperature is +25°C and humidity 60% R.H.(climate/temperature class 3M1)
- frame structure made of polyurethane, ensuring good insulation
- self-contained

Accessories:

- wide range of other laminate colours
- cashier and corner units
- central cooling
- sliding plexi doors on service side
- neutral glass shelf inside display
- cutting and balance boards
- knife holder



Deli display Metos newZita Mini 1562 V

| | |
|-------------------------------|---------------|
| Product capacity | 358 litre |
| Item width mm | 1642 |
| Item depth mm | 948 |
| Item height mm | 1190/1210 |
| Package volume | 1.885 |
| Unit of volume | m3 |
| Package volume | 1.885 m3 |
| Package length | 164 |
| Package width | 95 |
| Package height | 121 |
| Package unit of dimension | cm |
| Package dimensions (LxWxH) | 164x95x121 cm |
| Net weight | 154 |
| Net weight | 154 kg |
| Gross weight | 254 |
| Package weight | 254 kg |
| Unit of weight | kg |
| Connection power kW | 0.59 |
| Fuse Size A | 16 |
| Connection voltage V | 230 |
| Number of phases | 1NPE |
| Frequency Hz | 50 |
| Type of electrical connection | Plug |
| Electrical conn. height mm | 50 |
| Drain diameter | 32 |
| Cooling capacity W | 599 |
| Type of the refrigerant | R290 |
| Quantity of refrigerant g | 150 |
| Sound level dB | 60 |

Deli display Metos newZita Mini 1250 V

Imple rectangular-shaped design, which blends well into different kinds of interiors. Traight glass surfaces of the display minimizes the reflections and mirroring in the display enabling a good view of the displayed goods

- especially suitable for short time storage of e.g. sandwiches, tapas and salads
- open from the service side, which makes the refrigerated display space easily accessible when filling it up with products from the cold cabinets
- products can be kept cold in the stainless steel cold cabinets
- functionable 280 mm work table made of stainless steel on the service side which allows plenty of space to work, e.g. when cutting or packing products
- display area and kick plates made of stainless steel
- front and side panels in grey laminate
- energy efficient LED lights which give light to the exhibited products
- equipped with fan assisted ventilated cooling system and a digital thermostat and thermometer.
- temperature range for the food exhibited in the display is -1°C...+5°C, when the ambient temperature is +25°C and humidity 60% R.H.(climate/temperature class 3M1)
- frame structure made of polyurethane, ensuring good insulation
- self-contained

Accessories:

- wide range of other laminate colours
- cashier and corner units
- central cooling
- sliding plexi doors on service side
- neutral glass shelf inside display
- cutting and balance boards
- knife holder



Deli display Metos newZita Mini 1250 V

| | |
|-------------------------------|---------------|
| Product capacity | 286 litre |
| Item width mm | 1330 |
| Item depth mm | 948 |
| Item height mm | 1190/1210 |
| Package volume | 1.529 |
| Unit of volume | m3 |
| Package volume | 1.529 m3 |
| Package length | 133 |
| Package width | 95 |
| Package height | 121 |
| Package unit of dimension | cm |
| Package dimensions (LxWxH) | 133x95x121 cm |
| Net weight | 140 |
| Net weight | 140 kg |
| Gross weight | 232 |
| Package weight | 232 kg |
| Unit of weight | kg |
| Connection power kW | 0.45 |
| Fuse Size A | 16 |
| Connection voltage V | 230 |
| Number of phases | 1NPE |
| Frequency Hz | 50 |
| Type of electrical connection | Plug |
| Electrical conn. height mm | 50 |
| Drain diameter | 32 |
| Cooling capacity W | 429 |
| Type of the refrigerant | R290 |
| Quantity of refrigerant g | 120 |
| Sound level dB | 60 |

Deli display Metos newZita Mini 2500 V

Simple rectangular-shaped design, which blends well into different kinds of interiors. Straight glass surfaces of the display minimizes the reflections and mirroring in the display enabling a good view of the displayed goods

- especially suitable for short time storage of e.g. sandwiches, tapas and salads
- open from the service side, which makes the refrigerated display space easily accessible when filling it up with products from the cold cabinets
- products can be kept cold in the stainless steel cold cabinets
- functionable 280 mm work table made of stainless steel on the service side which allows plenty of space to work, e.g. when cutting or packing products
- display area and kick plates made of stainless steel
- front and side panels in grey laminate
- energy efficient LED lights which give light to the exhibited products
- equipped with fan assisted ventilated cooling system and a digital thermostat and thermometer.
- temperature range for the food exhibited in the display is -1°C...+5°C, when the ambient temperature is +25°C and humidity 60% R.H.(climate/temperature class 3M1)
- frame structure made of polyurethane, ensuring good insulation
- self-contained

Accessories:

- wide range of other laminate colours
- cashier and corner units
- central cooling
- sliding plexi doors on service side
- neutral glass shelf inside display
- cutting and balance boards
- knife holder



Deli display Metos newZita Mini 2500 V

| | |
|-------------------------------|---------------|
| Product capacity | 572 litre |
| Item width mm | 2580 |
| Item depth mm | 948 |
| Item height mm | 1190/1210 |
| Package volume | 2.977 |
| Unit of volume | m3 |
| Package volume | 2.977 m3 |
| Package length | 259 |
| Package width | 95 |
| Package height | 121 |
| Package unit of dimension | cm |
| Package dimensions (LxWxH) | 259x95x121 cm |
| Net weight | 222 |
| Net weight | 222 kg |
| Gross weight | 351 |
| Package weight | 351 kg |
| Unit of weight | kg |
| Connection power kW | 0.91 |
| Fuse Size A | 16 |
| Connection voltage V | 230 |
| Number of phases | 1NPE |
| Frequency Hz | 50 |
| Type of electrical connection | Plug |
| Electrical conn. height mm | 50 |
| Drain diameter | 32 |
| Cooling capacity W | 858 |
| Type of the refrigerant | R290 |
| Quantity of refrigerant g | 150 |
| Sound level dB | 60 |

Deli display Metos newZita Mini 3125 V

Simple rectangular-shaped design, which blends well into different kinds of interiors. Straight glass surfaces of the display minimizes the reflections and mirroring in the display enabling a good view of the displayed goods

- especially suitable for short time storage of e.g. sandwiches, tapas and salads
- open from the service side, which makes the refrigerated display space easily accessible when filling it up with products from the cold cabinets
- products can be kept cold in the stainless steel cold cabinets
- functionable 280 mm work table made of stainless steel on the service side which allows plenty of space to work, e.g. when cutting or packing products
- display area and kick plates made of stainless steel
- front and side panels in grey laminate
- energy efficient LED lights which give light to the exhibited products
- equipped with fan assisted ventilated cooling system and a digital thermostat and thermometer.
- temperature range for the food exhibited in the display is -1°C...+5°C, when the ambient temperature is +25°C and humidity 60% R.H.(climate/temperature class 3M1)
- frame structure made of polyurethane, ensuring good insulation
- self-contained

Accessories:

- wide range of other laminate colours
- cashier and corner units
- central cooling
- sliding plexi doors on service side
- neutral glass shelf inside display
- cutting and balance boards
- knife holder



Deli display Metos newZita Mini 3125 V

| | |
|-------------------------------|---------------|
| Product capacity | 715 litre |
| Item width mm | 3205 |
| Item depth mm | 948 |
| Item height mm | 1190/1210 |
| Package volume | 3.505 |
| Unit of volume | m3 |
| Package volume | 3.505 m3 |
| Package length | 321 |
| Package width | 95 |
| Package height | 121 |
| Package unit of dimension | cm |
| Package dimensions (LxWxH) | 321x95x121 cm |
| Net weight | 253 |
| Net weight | 253 kg |
| Gross weight | 395 |
| Package weight | 395 kg |
| Unit of weight | kg |
| Connection power kW | 1.1 |
| Fuse Size A | 16 |
| Connection voltage V | 230 |
| Number of phases | 1NPE |
| Frequency Hz | 50 |
| Type of electrical connection | Plug |
| Electrical conn. height mm | 50 |
| Drain diameter | 32 |
| Cooling capacity W | 1192 |
| Type of the refrigerant | R290 |
| Quantity of refrigerant g | 150 |
| Sound level dB | 60 |

Multideck display Metos MS12DCPIM1 LED with glass doors

Refrigerated multideck display suitable for packed products, drinks and even meat (climate class 3). Glass doors

- temperature range +2°C - +6°C (25°C/60%RH), ventilated cooling

- stainless steel external and internal, side walls made of glass
- four easily adjustable and tiltable shelves (300 mm deep) + bottom plane 405mm
- price ticket rail in front of the shelves
- LED lighting 4000k color in the ceiling and under each shelf
- electronic control
- standard perspex display front to optimize energy savings
- maximum product visibility



Multideck display Metos MS12DCPIM1 LED with glass doors

| | |
|-------------------------------|--|
| Product capacity | 455 liters/ refr.area 2,01m ² |
| Item width mm | 1330 |
| Item depth mm | 685 |
| Item height mm | 2000 |
| Package volume | 2.494 |
| Unit of volume | m ³ |
| Package volume | 2.494 m ³ |
| Package length | 145 |
| Package width | 80 |
| Package height | 215 |
| Package unit of dimension | cm |
| Package dimensions (LxWxH) | 145x80x215 cm |
| Net weight | 295 |
| Net weight | 295 kg |
| Gross weight | 320 |
| Package weight | 320 kg |
| Unit of weight | kg |
| Connection voltage V | 230 |
| Number of phases | 1NPE |
| Frequency Hz | 50 |
| Type of electrical connection | Plug |
| Type of the refrigerant | R290 |

CODE: MG4310683

Multideck display Metos MS18DCPIM1 LED with glass doors

Refrigerated multideck display suitable for packed products, drinks and even meat (climate class 3). Glass doors



Full description

Technical specifications

Refrigerated multideck display suitable for packed products, drinks and even meat (climate class 3). Glass doors

- temperature range +2°C - +6°C (25°C/60%RH), ventilated cooling
- stainless steel external and internal, side walls made of glass
- four easily adjustable and tiltable shelves (300 mm deep) + bottom plane 405mm
- price ticket rail in front of the shelves
- LED lighting 4000k color in the ceiling and under each shelf
- electronic control
- standard perspex display front to optimize energy savings
- maximum product visibility

GENERAL

| | |
|-------------|---|
| Description | Multideck display Metos MS18DCPIM1 LED with glass doors |
|-------------|---|

DIMENSIONS AND CAPACITY

| | |
|----------------------------|------------------------------|
| Product capacity | 683 liters/ refr.area 3,01m² |
| Item width mm | 1955 |
| Item depth mm | 685 |
| Item height mm | 2000 |
| Package volume | 3.526 m3 |
| Package dimensions (LxWxH) | 205x80x215 cm |
| Net weight | 375 kg |
| Package weight | 400 kg |

TECHNICAL INFORMATION

| | |
|-------------------------------|------|
| Connection voltage V | 230 |
| Number of phases | 1NPE |
| Frequency Hz | 50 |
| Type of electrical connection | Plug |
| Type of the refrigerant | R290 |
| Sound level dB | 63 |

CODE: MG4310697

Multideck open display Metos MS09PCM1 LED Black model R290

Refrigerated open multideck display suitable for packed products, drinks and even meat (climate class 3). Black modell



Full description

Technical specifications

Refrigerated open multideck display suitable for packed products, drinks and even meat (climate class 3). Black modell

- temperature range +2°C - +6°C (25°C/60%RH), ventilated cooling
- side walls made of glass
- four easily adjustable and tiltable shelves (300 mm deep) + bottom plane 405mm
- price ticket rail in front of the shelves
- LED lighting 4000k color in the ceiling and under each shelf
- electronic control
- standard perspex display front to optimize energy savings
- maximum product visibility
- night curtain

GENERAL

| | |
|---------------------------------------|--|
| Description | Multideck open display Metos MS09PCM1 LED Black model R290 |
| <u>DIMENSIONS AND CAPACITY</u> | |
| Product capacity | 342 liters/ refr.area 1,51m ² |
| Item width mm | 1018 |
| Item depth mm | 685 |
| Item height mm | 2000 |
| Package volume | 1.892 m ³ |
| Package dimensions (LxWxH) | 110x80x215 cm |
| Net weight | 205 kg |
| Package weight | 230 kg |
| <u>TECHNICAL INFORMATION</u> | |
| Connection voltage V | 230 |
| Number of phases | 1NPE |
| Frequency Hz | 50 |
| Type of electrical connection | Plug |
| Type of the refrigerant | R290 |

GENERAL

| | |
|---------------------------------------|--|
| Description | Multideck open display Metos MS09PCM1 LED Black model R290 |
| <u>DIMENSIONS AND CAPACITY</u> | |
| Product capacity | 342 liters/ refr.area 1,51m ² |
| Item width mm | 1018 |
| Item depth mm | 685 |
| Item height mm | 2000 |
| Package volume | 1.892 m ³ |
| Package dimensions (LxWxH) | 110x80x215 cm |

Multideck display Metos MS09DCPIM1 LED with double glass doors

Refrigerated multideck display suitable for packed products, drinks and even meat (climate class 3). Glass doors

- temperature range +2°C - +6°C (25°C/60%RH), ventilated cooling

- stainless steel external and internal, side walls made of glass
- four easily adjustable and tiltable shelves (300 mm deep) + bottom plane 405mm
- price ticket rail in front of the shelves
- LED lighting 4000k color in the ceiling and under each shelf
- electronic control
- standard perspex display front to optimize energy savings
- maximum product visibility



Multideck display Metos MS09DCPIM1 LED with double glass doors

| | |
|-------------------------------|--|
| Product capacity | 342 liters/ refr.area 1,51m ² |
| Item width mm | 1018 |
| Item depth mm | 685 |
| Item height mm | 2000 |
| Package volume | 1.892 |
| Unit of volume | m ³ |
| Package volume | 1.892 m ³ |
| Package length | 110 |
| Package width | 80 |
| Package height | 215 |
| Package unit of dimension | cm |
| Package dimensions (LxWxH) | 110x80x215 cm |
| Net weight | 230 |
| Net weight | 230 kg |
| Gross weight | 250 |
| Package weight | 250 kg |
| Unit of weight | kg |
| Connection voltage V | 230 |
| Number of phases | 1NPE |
| Frequency Hz | 50 |
| Type of electrical connection | Plug |
| Type of the refrigerant | R290 |

CODE: MG4310686

Multideck display Metos MS12DCPCM1 LED black model with glass doors

Refrigerated multideck display with glass doors suitable for packed products, drinks and even meat (climate class 3). Black model



Full description

Technical specifications

Refrigerated multideck display with glass doors suitable for packed products, drinks and even meat (climate class 3). Black model

- temperature range +2°C - +6°C (25°C/60%RH), ventilated cooling
- stainless steel external and internal, side walls made of glass
- four easily adjustable and tiltable shelves (300 mm deep) + bottom plane 405mm
- price ticket rail in front of the shelves
- LED lighting 4000k color in the ceiling and under each shelf
- electronic control
- standard perspex display front to optimize energy savings
- maximum product visibility

GENERAL

| | |
|-------------|---|
| Description | Multideck display Metos MS12DCPCM1 LED black model with glass doors |
|-------------|---|

DIMENSIONS AND CAPACITY

| | |
|----------------------------|------------------------------|
| Product capacity | 455 liters/ refr.area 2,01m² |
| Item width mm | 1330 |
| Item depth mm | 685 |
| Item height mm | 2000 |
| Package volume | 2.494 m3 |
| Package dimensions (LxWxH) | 145x80x215 cm |
| Net weight | 295 kg |
| Package weight | 320 kg |

TECHNICAL INFORMATION

| | |
|-------------------------------|------|
| Connection voltage V | 230 |
| Number of phases | 1NPE |
| Frequency Hz | 50 |
| Type of electrical connection | Plug |
| Type of the refrigerant | R290 |
| Sound level dB | 63 |

Multideck open display

Metos MS18PIM1 LED R290

Refrigerated open multideck display suitable for packed products, drinks and even meat (climate class 3). Temperature range +2°C - +6°C (25°C/60%RH), ventilated cooling

- stainless steel external and internal, side walls made of glass
- four easily adjustable and tiltable shelves (300 mm deep) + bottom plane 405mm
- price ticket rail in front of the shelves
- LED lighting 4000k color in the ceiling and under every shelf
- electronic control
- standard perspex display front to optimize energy savings
- maximum product visibility
- night curtain



Multideck open display Metos MS18PIM1 LED R290

| | |
|-------------------------------|--|
| Product capacity | 683 liters/ refr.area 3,01m ² |
| Item width mm | 1955 |
| Item depth mm | 685 |
| Item height mm | 2000 |
| Package volume | 3.526 |
| Unit of volume | m ³ |
| Package volume | 3.526 m ³ |
| Package length | 205 |
| Package width | 80 |
| Package height | 215 |
| Package unit of dimension | cm |
| Package dimensions (LxWxH) | 205x80x215 cm |
| Net weight | 340 |
| Net weight | 340 kg |
| Gross weight | 365 |
| Package weight | 365 kg |
| Unit of weight | kg |
| Connection voltage V | 230 |
| Number of phases | 1NPE |
| Frequency Hz | 50 |
| Type of electrical connection | Plug |
| Type of the refrigerant | R290 |

CODE: MG4310696

Multideck open display Metos MS06PCM1 LED black model R290

Refrigerated open multideck display suitable for packed products, drinks and even meat (climate class 3). Black model



Full description

Technical specifications

Refrigerated open multideck display suitable for packed products, drinks and even meat (climate class 3). Black model

- temperature range +2°C - +6°C (25°C/60%RH), ventilated cooling
- side walls made of glass
- four easily adjustable and tiltable shelves (300 mm deep) + bottom plane 405mm
- price ticket rail in front of the shelves
- LED lighting 4000k color in the ceiling and under each shelf
- electronic control
- standard perspex display front to optimize energy savings
- maximum product visibility
- night curtain

GENERAL

| | |
|-------------|--|
| Description | Multideck open display Metos MS06PCM1 LED black model R290 |
|-------------|--|

DIMENSIONS AND CAPACITY

| | |
|----------------------------|--|
| Product capacity | 228 liters/ refr.area 1,00m ² |
| Item width mm | 705 |
| Item depth mm | 685 |
| Item height mm | 2000 |
| Package volume | 1.376 m ³ |
| Package dimensions (LxWxH) | 80x80x215 cm |
| Net weight | 150 kg |
| Package weight | 175 kg |

TECHNICAL INFORMATION

| | |
|-------------------------------|------|
| Connection voltage V | 230 |
| Number of phases | 1NPE |
| Frequency Hz | 50 |
| Type of electrical connection | Plug |
| Type of the refrigerant | R290 |

CODE: MG4310699

Multideck open display Metos MS18PCM1 LED Black model R290

Refrigerated open multideck display suitable for packed products, drinks and even meat (climate class 3). Black model



Full description

Technical specifications

Refrigerated open multideck display suitable for packed products, drinks and even meat (climate class 3). Black model

- side walls made of glass
- four easily adjustable and tiltable shelves (300 mm deep) + bottom plane 405mm
- price ticket rail in front of the shelves
- LED lighting 4000k color in the ceiling and under each shelf
- electronic control
- standard perspex display front to optimize energy savings
- maximum product visibility
- night curtain

GENERAL

| | |
|---------------------------------------|--|
| Description | Multideck open display Metos MS18PCM1 LED Black model R290 |
| <u>DIMENSIONS AND CAPACITY</u> | |
| Product capacity | 683 liters/ refr.area 3,01m ² |
| Item width mm | 1955 |
| Item depth mm | 685 |
| Item height mm | 2000 |
| Package volume | 3.526 m ³ |
| Package dimensions (LxWxH) | 205x80x215 cm |
| Net weight | 340 kg |
| Package weight | 365 kg |
| <u>TECHNICAL INFORMATION</u> | |
| Connection voltage V | 230 |
| Number of phases | 1NPE |
| Frequency Hz | 50 |
| Type of electrical connection | Plug |
| Type of the refrigerant | R290 |

CODE: MG4310685

Multideck display Metos MS09DCPCM1 LED Black model with glass doors

Refrigerated multideck display suitable for packed products, drinks and even meat (climate class 3). Black model



Full description

Technical specifications

Refrigerated multideck display suitable for packed products, drinks and even meat (climate class 3). Black model

- glass doors
- temperature range +2°C - +6°C (25°C/60%RH), ventilated cooling
- stainless steel external and internal, side walls made of glass
- four easily adjustable and tiltable shelves (300 mm deep) + bottom plane 405mm
- price ticket rail in front of the shelves
- LED lighting 4000k color in the ceiling and under each shelf
- electronic control
- standard perspex display front to optimize energy savings
- maximum product visibility

GENERAL

| | |
|-------------|---|
| Description | Multideck display Metos MS09DCPCM1 LED Black model with glass doors |
|-------------|---|

DIMENSIONS AND CAPACITY

| | |
|----------------------------|--|
| Product capacity | 342 liters/ refr.area 1,51m ² |
| Item width mm | 1018 |
| Item depth mm | 685 |
| Item height mm | 2000 |
| Package volume | 1.892 m3 |
| Package dimensions (LxWxH) | 110x80x215 cm |
| Net weight | 206 kg |
| Package weight | 224 kg |

TECHNICAL INFORMATION

| | |
|-------------------------------|------|
| Connection voltage V | 230 |
| Number of phases | 1NPE |
| Frequency Hz | 50 |
| Type of electrical connection | Plug |
| Type of the refrigerant | R290 |
| Sound level dB | 63 |

CODE: MG4310684

Multideck display Metos MS06DCPCM1 LED black model with glass doors

Refrigerated multideck display with glass doors suitable for packed products, drinks and even meat (climate class 3). Black model



Full description

Technical specifications

Attachments

Refrigerated multideck display with glass doors suitable for packed products, drinks and even meat (climate class 3). Black model

- temperature range +2°C - +6°C (25°C/60%RH), ventilated cooling
- stainless steel external and internal, side walls made of glass
- four easily adjustable and tiltable shelves (300 mm deep) + bottom plane 405mm
- price ticket rail in front of the shelves
- LED lighting 4000k color in the ceiling and under each shelf
- electronic control
- standard perspex display front to optimize energy savings
- maximum product visibility

GENERAL

| | |
|---------------------------------------|---|
| Description | Multideck display Metos MS06DCPCM1 LED black model with glass doors |
| <u>DIMENSIONS AND CAPACITY</u> | |
| Product capacity | 228 liters/ refr.area 1,00m ² |
| Item width mm | 705 |
| Item depth mm | 685 |
| Item height mm | 2000 |
| Package volume | 1.376 m3 |
| Package dimensions (LxWxH) | 80x80x215 cm |
| Net weight | 165 kg |
| Package weight | 190 kg |

TECHNICAL INFORMATION

| | |
|-------------------------------|------|
| Connection voltage V | 230 |
| Number of phases | 1NPE |
| Frequency Hz | 50 |
| Type of electrical connection | Plug |
| Type of the refrigerant | R290 |
| Sound level dB | 63 |

GENERAL

| | |
|-------------|---|
| Description | Multideck display Metos MS06DCPCM1 LED black model with glass doors |
|-------------|---|

DIMENSIONS AND CAPACITY

| | |
|----------------------------|------------------------------|
| Product capacity | 228 liters/ refr.area 1,00m² |
| Item width mm | 705 |
| Item depth mm | 685 |
| Item height mm | 2000 |
| Package volume | 1.376 m3 |
| Package dimensions (LxWxH) | 80x80x215 cm |
| Net weight | 165 kg |
| Package weight | 190 kg |

TECHNICAL INFORMATION

| | |
|-------------------------------|------|
| Connection voltage V | 230 |
| Number of phases | 1NPE |
| Frequency Hz | 50 |
| Type of electrical connection | Plug |
| Type of the refrigerant | R290 |
| Sound level dB | 63 |

CODE: MG4310680

Multideck open display Metos MS06DCPIM1 LED with double glass doors

Refrigerated multideck display suitable for packed products, drinks and even meat (climate class 3). Glass doors



Full description

Technical specifications

Refrigerated multideck display suitable for packed products, drinks and even meat (climate class 3). Glass doors

- temperature range +2°C - +6°C (25°C/60%RH), ventilated cooling
- stainless steel external and internal, side walls made of glass
- four easily adjustable and tiltable shelves (300 mm deep) + bottom plane 405mm
- price ticket rail in front of the shelves
- LED lighting 4000k color in the ceiling and under each shelf
- electronic control
- standard perspex display front to optimize energy savings
- maximum product visibility

GENERAL

| | |
|-------------|---|
| Description | Multideck open display Metos MS06DCPIM1 LED with double glass doors |
|-------------|---|

DIMENSIONS AND CAPACITY

| | |
|----------------------------|--|
| Product capacity | 228 liters/ refr.area 1,00m ² |
| Item width mm | 705 |
| Item depth mm | 685 |
| Item height mm | 2000 |
| Package volume | 1.376 m3 |
| Package dimensions (LxWxH) | 80x80x215 cm |
| Net weight | 165 kg |
| Package weight | 190 kg |

TECHNICAL INFORMATION

| | |
|-------------------------------|------|
| Connection voltage V | 230 |
| Number of phases | 1NPE |
| Frequency Hz | 50 |
| Type of electrical connection | Plug |
| Type of the refrigerant | R290 |

Multideck open display

Metos MS09PIM1 LED

Refrigerated open multideck display suitable for packed products, drinks and even meat (climate class 3). Temperature range +2°C - +6°C (25°C/60%RH), ventilated cooling

- stainless steel external and internal, side walls made of glass
- four easily adjustable and tiltable shelves (300 mm deep) + bottom plane 405mm
- price ticket rail in front of the shelves
- LED lighting 4000k color in the ceiling and under every shelf
- electronic control
- standard perspex display front to optimize energy savings
- maximum product visibility
- night curtain



Multideck open display Metos MS09PIM1 LED

| | |
|-------------------------------|--|
| Product capacity | 342 liters/ refr.area 1,51m ² |
| Item width mm | 1018 |
| Item depth mm | 685 |
| Item height mm | 2000 |
| Package volume | 1.892 |
| Unit of volume | m ³ |
| Package volume | 1.892 m ³ |
| Package length | 110 |
| Package width | 80 |
| Package height | 215 |
| Package unit of dimension | cm |
| Package dimensions (LxWxH) | 110x80x215 cm |
| Net weight | 205 |
| Net weight | 205 kg |
| Gross weight | 230 |
| Package weight | 230 kg |
| Unit of weight | kg |
| Connection power kW | 1.478 |
| Connection voltage V | 230 |
| Number of phases | 1NPE |
| Frequency Hz | 50 |
| Type of electrical connection | Plug |
| Type of the refrigerant | R290 |

Multideck open display

Metos MS12PIM1 LED

Refrigerated open multideck display suitable for packed products, drinks and even meat (climate class 3). Temperature range +2°C - +6°C (25°C/60%RH), ventilated cooling

- stainless steel external and internal, side walls made of glass
- four easily adjustable and tiltable shelves (300 mm deep) + bottom plane 405mm
- price ticket rail in front of the shelves
- LED lighting 4000k color in the ceiling and under each shelf
- electronic control
- standard perspex display front to optimize energy savings
- maximum product visibility
- including night cover



Multideck open display Metos MS12PIM1 LED

| | |
|-------------------------------|--|
| Product capacity | 455 liters/ refr.area 2,01m ² |
| Item width mm | 1330 |
| Item depth mm | 685 |
| Item height mm | 2000 |
| Package volume | 2.494 |
| Unit of volume | m ³ |
| Package volume | 2.494 m ³ |
| Package length | 145 |
| Package width | 80 |
| Package height | 215 |
| Package unit of dimension | cm |
| Package dimensions (LxWxH) | 145x80x215 cm |
| Net weight | 260 |
| Net weight | 260 kg |
| Gross weight | 285 |
| Package weight | 285 kg |
| Unit of weight | kg |
| Connection power kW | 1.706 |
| Connection voltage V | 230 |
| Number of phases | 1NPE |
| Frequency Hz | 50 |
| Type of electrical connection | Plug |
| Type of the refrigerant | R290 |

Multideck open display

Metos MS12PCM1 LED

black model R290

Refrigerated open multideck display suitable for packed products, drinks and even meat (climate class 3). Black model
- temperature range +2°C - +6°C (25°C/60%RH), ventilated cooling

- side walls made of glass
- four easily adjustable and tiltable shelves (300 mm deep) + bottom plane 405mm
- price ticket rail in front of the shelves
- LED lighting 4000k color in the ceiling and under every shelf
- electronic control
- standard perspex display front to optimize energy savings
- maximum product visibility
- night curtain



Multideck open display Metos MS12PCM1 LED black model R290

| | |
|-------------------------------|--|
| Product capacity | 455 liters/ refr.area 2,01m ² |
| Item width mm | 1330 |
| Item depth mm | 685 |
| Item height mm | 2000 |
| Package volume | 2.494 |
| Unit of volume | m ³ |
| Package volume | 2.494 m ³ |
| Package length | 145 |
| Package width | 80 |
| Package height | 215 |
| Package unit of dimension | cm |
| Package dimensions (LxWxH) | 145x80x215 cm |
| Net weight | 260 |
| Net weight | 260 kg |
| Gross weight | 285 |
| Package weight | 285 kg |
| Unit of weight | kg |
| Connection voltage V | 230 |
| Number of phases | 1NPE |
| Frequency Hz | 50 |
| Type of electrical connection | Plug |
| Type of the refrigerant | R290 |

CODE: MG4310727

Multideck display Metos Filip 300-625 M1 Black



Technical specifications

GENERAL

| | |
|-------------|---|
| Description | Multideck display Metos Filip 300-625 M |
|-------------|---|

DIMENSIONS AND CAPACITY

| | |
|----------------------------|---------------------|
| Product capacity | 1,02m2 display area |
| Item width mm | 625 |
| Item depth mm | 645 |
| Item height mm | 1949-1970 |
| Package volume | 0.159 m3 |
| Package dimensions (LxWxH) | 68x67x35 cm |
| Net weight | 102 kg |
| Package weight | 106 kg |

TECHNICAL INFORMATION

| | |
|-------------------------------|-------|
| Connection power kW | 1.315 |
| Connection voltage V | 230 |
| Number of phases | 1N |
| Frequency Hz | 50 |
| Type of electrical connection | Plug |
| Electrical conn. height mm | 50 |
| Type of the refrigerant | R290 |
| Quantity of refrigerant g | 150 |

CODE: MG4001401

Cold display Metos Columbia 900 Small Curved with night blind

Black curved cold display with three shelves and a night blind.



Full description

Technical specifications

Black curved cold display with three shelves and a night blind.

- built-in aggregate with electronic controller in front panel
- automatic defrost
- ventilation cooling
- Refrigerant R290 (propan)
- side double glass
- maximum visibility of products in display
- 3 adjustable stainless steel shelves including price holders
- led light placed on top
- Black RAL 9005 smooth, matt 30% dupont
- castors
- temperature area +2...+6°C (at ambient temperature +25°C, relative humidity 60%)
- dimension includes compulsory distance from wall

GENERAL

| | |
|-------------|---|
| Description | Cold display Metos Columbia 900 Small Curved with night blind |
|-------------|---|

DIMENSIONS AND CAPACITY

| | |
|----------------------------|---------------|
| Product capacity | three shelves |
| Item width mm | 900 |
| Item depth mm | 660/760 |
| Item height mm | 1350 |
| Package volume | 1.102 m3 |
| Package dimensions (LxWxH) | 95x80x145 cm |
| Net weight | 153 kg |
| Package weight | 180 kg |

TECHNICAL INFORMATION

| | |
|-------------------------------|------|
| Connection power kW | 0.84 |
| Connection voltage V | 230 |
| Number of phases | 1NPE |
| Frequency Hz | 50 |
| Type of electrical connection | Plug |
| Electrical conn. height mm | 25 |
| Type of the refrigerant | R290 |
| Quantity of refrigerant g | 148 |

CODE: MG4001400

Cold display Metos Columbia 900 Small Square with night blind

Black square cold display with three shelves and a night blind. Built-in aggregate with electronic controller in front panel



Full description

Technical specifications

Black square cold display with three shelves and a night blind. Built-in aggregate with electronic controller in front panel

- automatic defrost
- ventilation cooling
- side double glass
- maximum visibility of products in display
- 3 adjustable stainless steel shelves including price holders
- led light placed on top
- castors
- temperature area +2...+6°C (at ambient temperature +25°C, relative humidity 60%)
- dimension includes compulsory distance from wall
- Black RAL 9005 smooth, matt 30% dupont

GENERAL

| | |
|---------------------------------------|---|
| Description | Cold display Metos Columbia 900 Small Square with night blind |
| <u>DIMENSIONS AND CAPACITY</u> | |
| Product capacity | three shelves |
| Item width mm | 900 |
| Item depth mm | 660/760 |
| Item height mm | 1350 |
| Package volume | 1.102 m3 |
| Package dimensions (LxWxH) | 95x80x145 cm |
| Net weight | 153 kg |
| Package weight | 180 kg |

TECHNICAL INFORMATION

| | |
|-------------------------------|------|
| Connection power kW | 0.84 |
| Connection voltage V | 230 |
| Number of phases | 1NPE |
| Frequency Hz | 50 |
| Type of electrical connection | Plug |
| Electrical conn. height mm | 25 |
| Type of the refrigerant | R290 |
| Quantity of refrigerant g | 148 |

CODE: MG4001402

Cold display Metos Columbia 900 Small Straight with night blind

Black straight cold display with 3 shelves and night blind. Built-in aggregate with electronic controller in front panel



Full description

Technical specifications

Black straight cold display with 3 shelves and night blind. Built-in aggregate with electronic controller in front panel

- automatic defrost
- ventilation cooling
- side double glass
- maximum visibility of products in display
- 3 adjustable stainless steel shelves including price holders
- led light placed on top
- castors
- temperature area +2...+6°C (at ambient temperature +25°C, relative humidity 60%)
- dimension includes compulsory distance from wall
- Black RAL 9005 smooth, matt 30% dupont

GENERAL

| | |
|-------------|---|
| Description | Cold display Metos Columbia 900 Small Straight with night blind |
|-------------|---|

DIMENSIONS AND CAPACITY

| | |
|----------------------------|---------------|
| Product capacity | three shelves |
| Item width mm | 900 |
| Item depth mm | 660/760 |
| Item height mm | 1350 |
| Package volume | 1.102 m3 |
| Package dimensions (LxWxH) | 95x80x145 cm |
| Net weight | 153 kg |
| Package weight | 180 kg |

TECHNICAL INFORMATION

| | |
|-------------------------------|------|
| Connection power kW | 0.84 |
| Connection voltage V | 230 |
| Number of phases | 1NPE |
| Frequency Hz | 50 |
| Type of electrical connection | Plug |
| Electrical conn. height mm | 25 |
| Type of the refrigerant | R290 |
| Quantity of refrigerant g | 148 |



По вопросам продаж и поддержки обращайтесь:

Алматы (727)345-47-04
Ангарск (3955)60-70-56
Архангельск (8182)63-90-72
Астрахань (8512)99-46-04
Барнаул (3852)73-04-60
Белгород (4722)40-23-64
Благовещенск (4162)22-76-07
Брянск (4832)59-03-52
Владивосток (423)249-28-31
Владикавказ (8672)28-90-48
Владимир (4922)49-43-18
Волгоград (844)278-03-48
Вологда (8172)26-41-59
Воронеж (473)204-51-73
Екатеринбург (343)384-55-89

Иваново (4932)77-34-06
Ижевск (3412)26-03-58
Иркутск (395)279-98-46
Казань (843)206-01-48
Калининград (4012)72-03-81
Калуга (4842)92-23-67
Кемерово (3842)65-04-62
Киров (8332)68-02-04
Коломна (4966)23-41-49
Кострома (4942)77-07-48
Краснодар (861)203-40-90
Красноярск (391)204-63-61
Курск (4712)77-13-04
Курган (3522)50-90-47
Липецк (4742)52-20-81

Магнитогорск (3519)55-03-13
Москва (495)268-04-70
Мурманск (8152)59-64-93
Набережные Челны (8552)20-53-41
Нижегород (831)429-08-12
Новокузнецк (3843)20-46-81
Ноябрьск (3496)41-32-12
Новосибирск (383)227-86-73
Омск (3812)21-46-40
Орел (4862)44-53-42
Оренбург (3532)37-68-04
Пенза (8412)22-31-16
Петрозаводск (8142)55-98-37
Псков (8112)59-10-37
Пермь (342)205-81-47

Ростов-на-Дону (863)308-18-15
Рязань (4912)46-61-64
Самара (846)206-03-16
Санкт-Петербург (812)309-46-40
Саратов (845)249-38-78
Севастополь (8692)22-31-93
Саранск (8342)22-96-24
Симферополь (3652)67-13-56
Смоленск (4812)29-41-54
Сочи (862)225-72-31
Ставрополь (8652)20-65-13
Сургут (3462)77-98-35
Сыктывкар (8212)25-95-17
Тамбов (4752)50-40-97
Тверь (4822)63-31-35

Тольятти (8482)63-91-07
Томск (3822)98-41-53
Тула (4872)33-79-87
Тюмень (3452)66-21-18
Ульяновск (8422)24-23-59
Улан-Удэ (3012)59-97-51
Уфа (347)229-48-12
Хабаровск (4212)92-98-04
Чебоксары (8352)28-53-07
Челябинск (351)202-03-61
Череповец (8202)49-02-64
Чита (3022)38-34-83
Якутск (4112)23-90-97
Ярославль (4852)69-52-93

Россия +7(495)268-04-70

Казахстан +7(727)345-47-04

Беларусь +(375)257-127-884

Узбекистан +998(71)205-18-59

Киргизия +996(312)96-26-47

эл.почта: mhi@nt-rt.ru || сайт: <http://metos.nt-rt.ru/>